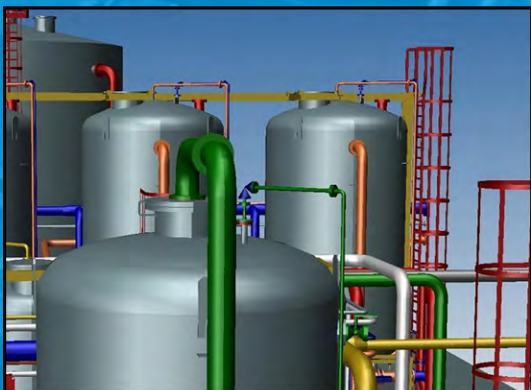
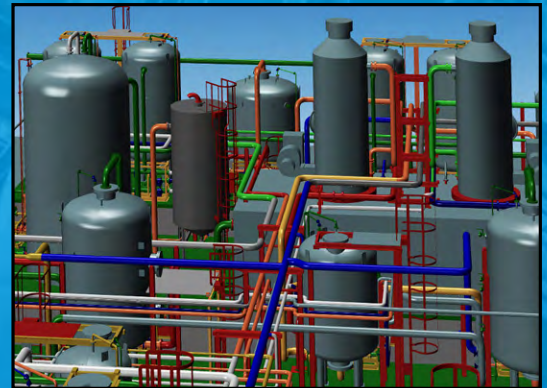


## 2015 PRODUCT CATALOG



Levelpro is proud to work with an outstanding network of professional distributors around the world to market our Industrial Level + Temperature products.

# COMPANY PROFILE

---

Levelpro is a global market leader that specializes in **Thermoplastic Liquid Level + Temperature Instrumentation Equipment**

Levelpro products are designed to be different from the rest; products that are truly innovative, offering unique features and benefits, they are engineered to work seamlessly in some of the toughest industrial process applications.

All products are made from corrosion resistant thermoplastics, they are built tough and designed to work where the competition fails.

Our markets include Municipal and Industrial Water & Waste-Water Treatment, Bulk Chemicals, Steel Processing, Metal Finishing, Chemical Dosing Skids, Food & Beverage.

Levelpro aspires to be your Number one choice for all your **Level** and **Temperature** process Applications

Levelpro...Innovative Products that are **'Built Tough' and 'Engineered to Outperform!'**



## 100 SERIES

HEAVY DUTY INDUSTRIAL  
LEVEL TRANSMITTER

PVC, PP, PVDF

Low Cost-Compact Design

Excellent Long Term Stability

High Accuracy

Flush Sensor - Non Clogging Design

Heavy Duty PTFE Cable (5m, 10m, 15m)

Length - Other Lengths Available

Excellent for Foam, Vapor or Condensate

Ceramic Sensing Diaphragm

Heavy Duty Rugged Design

No Moving Parts

Automatic Temperature Compensation

## 700 SERIES

INDUSTRIAL LEVEL  
TRANSMITTER

Heavy Duty Rugged Design

No Moving Parts

Designed for Tank Level Measurement of  
Viscous Liquids

High Accuracy

Ceramic Sensing Diaphragm

Housing Material PVDF or PP

Flush Sensor - Non Clogging

Great for Foam-Vapor-Turbulence

All Plastic Design

Small Footprint

FEP Teflon Coated cable (3m, 5m, 10m, 15m)

## 600 SERIES

INDUSTRIAL LEVEL  
TRANSMITTER

Heavy Duty Rugged Design

No Moving Parts

Designed for Tank Level

Measurement of Viscous Liquids

High Accuracy

Ceramic Sensing Diaphragm

Housing Material PTPE Teflon®

Great for Foam-Vapor-Turbulence

All Plastic Design

Small Footprint

Solid PTPE Teflon® Cable

## HEAVY DUTY INDUSTRIAL LEVEL TRANSMITTER

- Compact
- Low Cost
- Excellent Long Term Stability
- High Accuracy ( 0.35% Option)
- Flush Sensor - Non Clogging Design
- Heavy Duty PVC Cable ( 5m, 10m, 15m)
- Length - Other Lengths Available
- Excellent for Foam, Vapor or Condensate
- Ceramic Sensing Diaphragm
- Heavy Duty Rugged Design
- No Moving Parts
- Automatic Temperature Compensation

## LEVEL PRO SUBMERSIBLE PVC LEVEL PRESSURE SENSOR

- Two Piece Split Body Modular Design
- Change Sensor Head Without having to rewire
- Excellent Chemical Resistance
- All Plastic PVC Rugged Design
- Eliminates Expensive Conduit Re-wiring
- FEP Teflon® Cable
- Very Accurate > .25% (Option) Capable of Reading Tank/Sump Level 1.6ft - 100ft

## LP200 PLASTIC PRESURE TRANSMITTER

- PP, PVDF/Ceramic Sensor
- Excellent Chemical Resistance
- Process or Level Pressure Indication
- Large Range : 0-225 Psi
- Output : 4-20mA
- ½" NPT or G Type Connection
- Ceramic Sensing Diaphragm
- Plus & Play Design
- 0.5% High Accuracy
- LED DISPLAY-Relay Output (Optional)
- Temperature Compensated
- Process or Tank Level Measurement

## 800 SERIES



## ITC 900 SERIES



## LP200 SERIES



## TVL SERIES



Remote (Optional)

## LIQUID LEVEL DISPLAY

All in One - Controller + NEMA 4X Enclosure

Input : 4-20 mA

1A Relay Output + 4-20mA Output  
or 2 Relay Outputs

Power Supply Output: 24V DC

RS-485/ Modbus RTU Standard

Signal Peak Value Detection

3 Wire Cord Grips Included

2 Relay Output

## TVF SERIES



Remote (Optional)

TVF FLOW DISPLAY  
+ TOTAL + BATCHER

Flow Meter, Batcher, Totalizer

2 Relay Outputs

Power Supply Output 24V DC

RS-485 / Modbus RTU Standard

Display of Instantaneous Flow Rate and  
the Total Flow Values

Batching and Counting of Doses

4-20mA Output + Relay Output

3 Cord Grips Included

## 450 SERIES



Remote (Optional)

INDUSTRIAL LEVEL  
CONTROLLER

Large Bright LED Display

Deceleration of Relay Outputs

Adjustable Display Brightness

Analogue Output 4 - 20 mA + 1 Relay  
or 2 Relay Outputs

Acoustic Signal (Beep)

Input Signal 4 - 20 mA

4-digit LED Display

Sensor Power Supply 24 VDC Output

Communication Interface RS-485 (Modbus RTU)

4 Configurable Relays (1 amp)

Standard Dimensions for Retro fit Applications

### LDA-1000 AUDIBLE VISUAL DISPLAY + ALARM

- All in One - Controller + NEMA 4X Enclosure
- Input : 4-20 mA
- 1A Relay Output + 4-20mA Output
- Power Supply Output: 24V DC
- RS-485/ Modbus RTU Standard
- Signal Peak Value Detection
- 2 Wire Cord Grips Included
- 2 Relay Output
- 6ft Power Cable Provided

## LDA-1000 SERIES



### AUDIBLE SENTRY ALARM SYSTEM

- High Intensity Red Alarm Light
- 90 dB Audible Alarm with External Test-Silence-Normal Positions
- Rugged NEMA 4X Industrial Design Enclosure
- Latching Lockable Cover (No Screws Required) Lockable
- External Mounting Feet Installs in Minutes
- UL Listed Enclosure (CSA)
- High Impact All Plastic Polycarbonate Shell
- Small Foot Print - Compact Design
- Excellent Chemical Resistance
- Includes 6' Power Cord + Seal-Tight Cord Connector
- High/Low Level Sensing for Tanks/Sumps
- Bag/Filter Change out
- Leak Detection
- Flow/No Flow Sensors - Pump Protect
- Upset Condition Notification

## ProAlert 1000 SERIES



### INDUSTRIAL LEVEL CONTROLLER

- 4-20 mA Universal Loop-powered
- NEMA 4X Enclosure Display
- Alarm Output
- Peak Values Detection
- No Extra Power Supply Required
- Optional IR Remote Controller

## 250 SERIES



Remote (Optional)

## 650 SERIES

650 SERIES DISPLAY +  
CONTROLLER + LOGGER

Universal Multichannel Indicator

Graphic Display

Up to 8 inputs Universal 4-20 mA

2 Electronic Relay Outputs

24VDC Power Supply Output: 24V DC / 200 mA

Will Power All 8 Channels

RS-485 / Modbus RTU Standard

Temperature, Flow, Humidity, Pressure,

PH, Redox, Level, Current

Viewing the Trends in each of the 8 Measuring Channels

Any Text Description Possible: Name and Units

Data transfer to the Master System via RS-485

Password Protected

## 7200 SERIES

7200 SERIES DISPLAY +  
CONTROLLER + DATA LOGGER

Universal Multichannel Indicator

Graphic Display

Up to 48 inputs Universal 4-20 mA

Numerous Universal Outputs

24VDC Power Supply Output: 24V DC / 200 mA

Will Power All 8 Channels

RS-485 / Modbus RTU Standard

Temperature, Flow, Humidity, Pressure,

PH, Redox, Level, Current

Viewing the Trends in each of the  
48 Measuring Channels

Any Text Description Possible: Name and Units

Data transfer to the Master System via RS-485

Password Protected

## 8000 SERIES

8000 - DISPLAY +  
CONTROLLER + DATA LOGGER

Universal Multichannel Indicator

Graphic Display

Up to 8 inputs Universal 4-20 mA

2 Electronic Relay Outputs

24VDC Power Supply Output: 24V DC / 200 mA

Will Power All 8 Channels

RS-485 / Modbus RTU Standard

Temperature, Flow, Humidity, Pressure,

PH, Redox, Level, Current

Viewing the Trends in each of the 8 Measuring Channels

Any Text Description Possible: Name and Units

Data transfer to the Master System via RS-485

Password Protected

# LP 100 SERIES

## LP 100 TANK LEVEL INSTALLTION FITTING

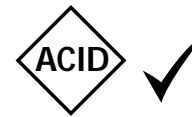
- All Plastic NEMA 4X Enclosure.
- Threaded Polyethelyne Connection
- Light Weight GRP-(Glass Reinforced Polycarbonate)-High Impact
- Excellent Chemical Resistance
- Weather Resistant



# PFS SERIES

## PFS SERIES ALL PLASTIC LEVEL SWITCH

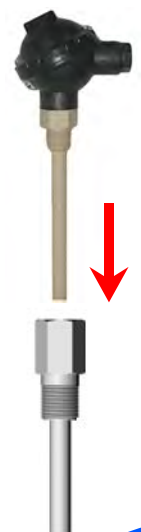
- Available Vapour in PVC, PPH, PVDF Materials
- Up to 4 Bi-Stable Change Over Sontacts Switches
- Not Effected by Foam or Vapor
- No Power Required
- Automation ON/OFF of Pumps and Actuated Valves
- Low and High Alarm Indication, Automatic Tank Filling or Draining.



# TPP SERIES

## TPP SERIES ALL PLASTIC TEMPERATURE PROBE

- Flow Meter, Batcher, Totalizer
- 2 Relay Outputs
- Power Supply Output 24V DC
- RS-485 / Modbus RTU Standard
- Display of Instantaneous Flow Rate and the Total Flow Values
- Batching and Counting of Doses
- 4-20mA Output + Relay Output
- 3 Cord Grips Included





## PROSCAN SERIES



### PROSCAN SERIES RADAR LEVEL TRANSMITTER

- All Plastic Teflon Design
- Small Dead Band 12"
- PP, PTFE Antenna (Horn) Low Profile
- Simple Programming
- Suitable for Dense Foam, Vapor
- Excellent Chemical Resistance
- Fail Safe Diagnostics
- Simple Configuration
- Push button
- IP67 Housing
- Epoxy Coated
- Loop Powered
- Visual Display Window

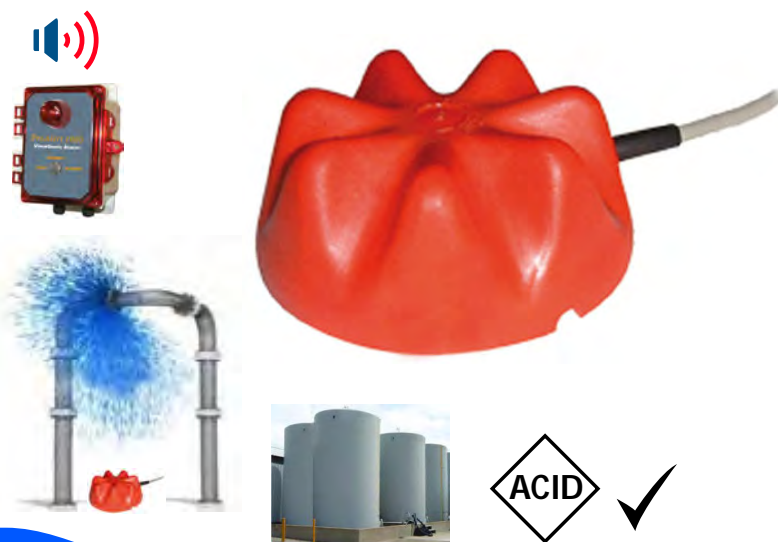
## LDS-YN SERIES



### LDS-YN LEAK DETECTION SWITCH

- Suitable for Corrosive Environments
- High Stability with Thermal Compensation
- PP All Plastic Body
- Non-Contact Technology

## LDS-R SERIES



### LDS-R SERIES LEAK DETECTION SENSOR

- Floor Design
- Capacitive, Fail-Safe Design
- Perfect for Aggressive and Electrically Conductive Corrosive Chemicals
- Containment Dikes
- Double Wall Tanks
- Leakage Basing
- Computer Rooms

## SENTINEL TELEMETRY TANK LEVEL MONITORING

- Battery Operated - No Programming - One Button Only.
- Remote Monitoring through Cellular Networks
- E-mail Reporting - Alarms, Text E-mail
- 24/7 access to data through Cloud Based Sentinel 247TM Online
- Battery powered up to 5 years (3 calls/day)
- Variety of Trigger Points
- Mobile Ready Access
- Small Footprint
- Works with your Existing Equipment
- Low Monthly Cost
- Powerful - Long Range Antenna
- (Perfect For Remote Locations)
- Access Data Via PC, Laptop, Smartphone, Tablet
- Secure Cloud Data (password protected)
- No Hidden Costs
- Standard Batteries
- Can be Mounted Directly to Top of Tank - 2" NPT
- Eliminate Costly Emergency Fills or Pump-Outs



(No External Power)



## LDS SERIES

### LDS-BATTERY OP LEAK DETECTION SWITCH

- Fully Submersible
- Easy to Install-No Wires Required
- Long life battery
- Can be connected to the alarm panel
- Reliable
- Corrosion Resistant
- Indoor/Outdoor Service
- 1 Year Battery Life.



## PLS SERIES

### PLS SERIES LEVEL SWITCHES

- Economical
- Easy to Install
- High or Low level Indication
- All Plastic Design



# LEVEL + TEMPERATURE

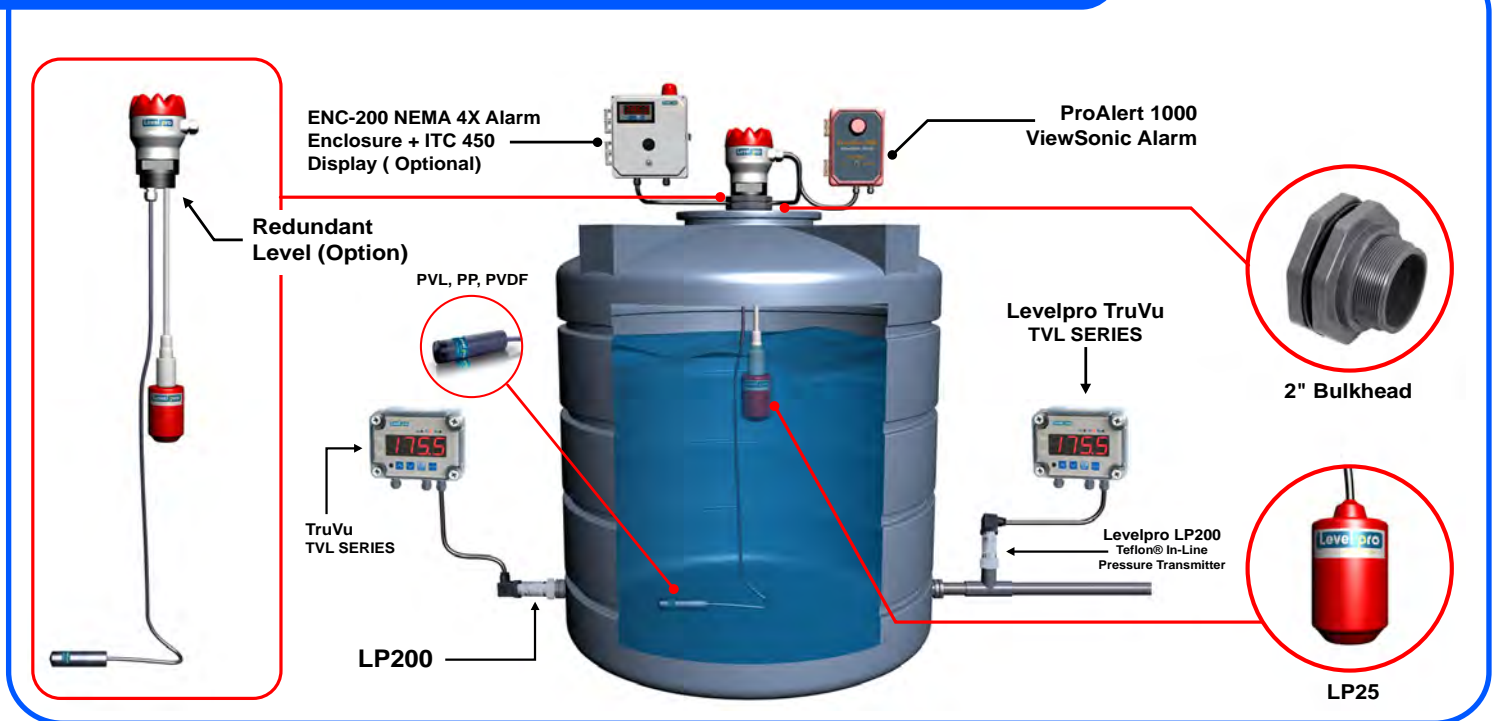


**Submersible Level Sensor  
(PVC, PP, PVDF, PTFE)**



**Sentinel 247  
Telemetry Tank Level Monitoring**

## WORK PROCESS



# Level pro



for more information visit [www.levelprosales.com](http://www.levelprosales.com)