



MATERIALS OF CONSTRUCTION:  
POLYCARBOTATE

|             |     |                 |
|-------------|-----|-----------------|
| Capacity:   | N/A | Gallons         |
| Max Temp.:  | 120 | F               |
| Max Press.: | N/A | PSI             |
| Weight:     | 10  | Lbs.            |
| Voltage.:   | 120 | VAC 1 Phs 60 Hz |
| FLA.:       | 1.0 | amps            |

|    |   |   |
|----|---|---|
| 20 | x | x |
| 19 | x | x |
| 18 | x | x |
| 17 | x | x |
| 16 | x | x |
| 15 | x | x |
| 14 | x | x |
| 13 | x | x |
| 12 | x | x |
| 11 | x | x |
| 10 | x | x |
| 9  | x | x |
| 8  | x | x |
| 7  | x | x |
| 6  | x | x |
| 5  | x | x |
| 4  | x | x |
| 3  | x | x |
| 2  | x | x |
| 1  | x | x |

| # | PART | DESCRIPTION |
|---|------|-------------|
| F | x    | xx/xx/xx    |
| E | x    | xx/xx/xx    |
| D | x    | xx/xx/xx    |
| C | x    | xx/xx/xx    |
| B | x    | xx/xx/xx    |

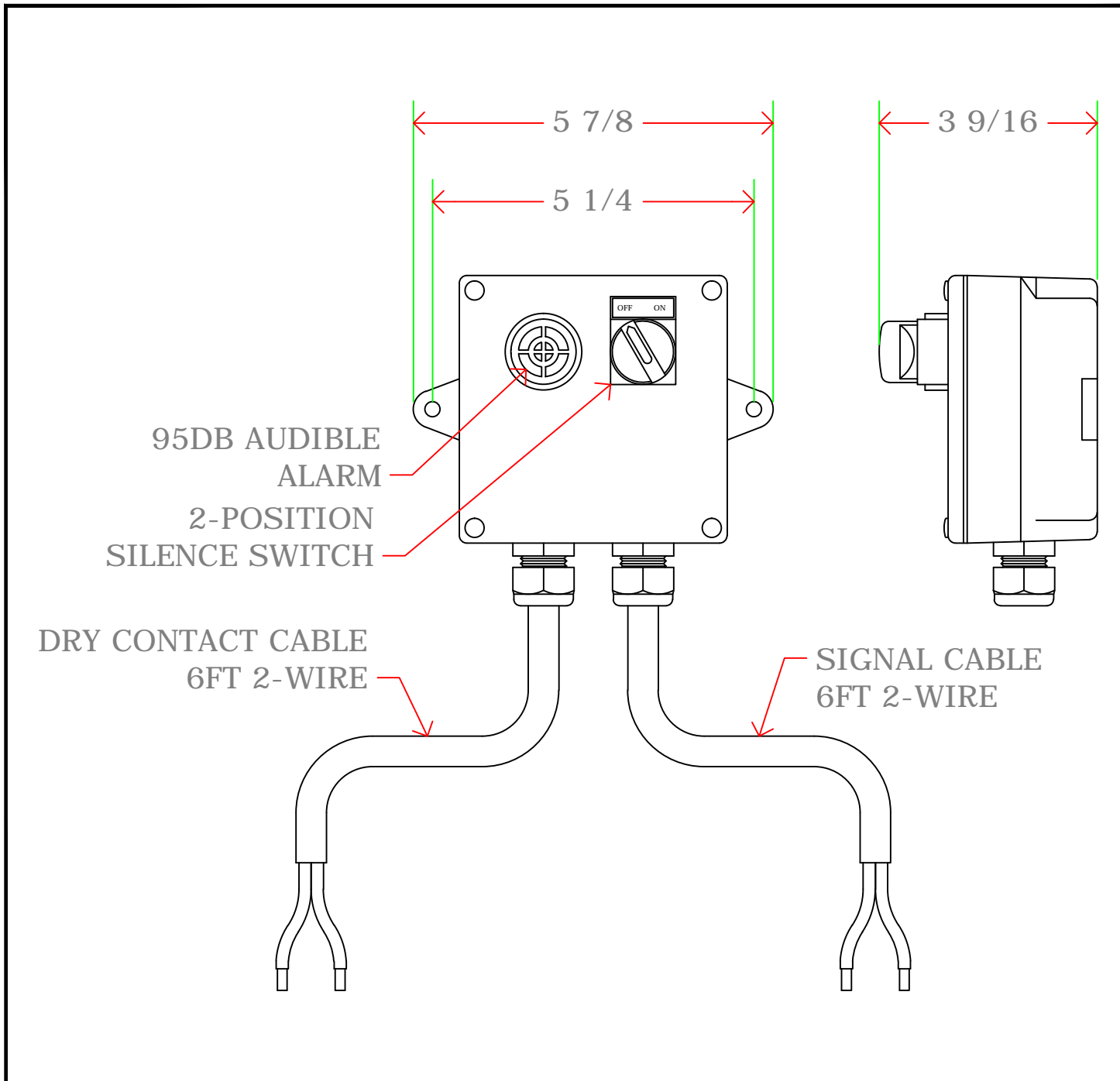
REV DESCRIPTION DATE

General Treatment Products, Inc.  
PO Box 8697, Brea, CA 92822  
Phone: 714) 257-9165 <http://www.gtpcompany.com>  
Fax: 714) 257-9215 [customerservice@gtpcompany.com](mailto:customerservice@gtpcompany.com)

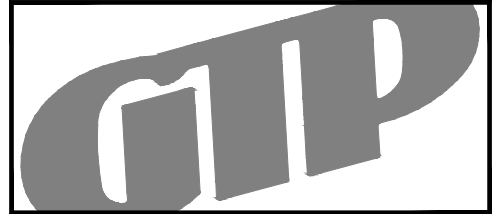
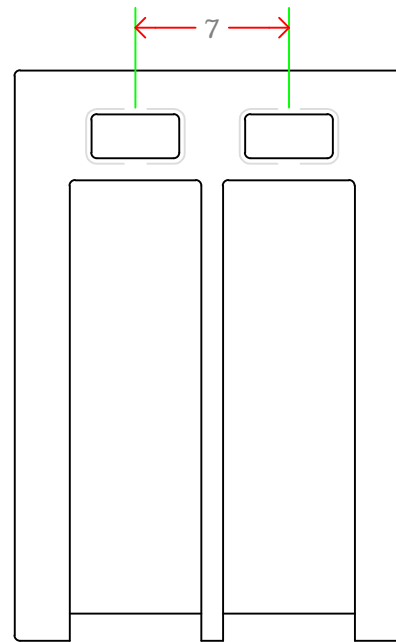
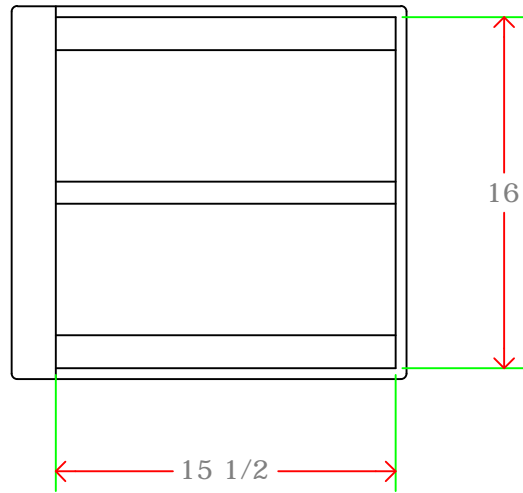
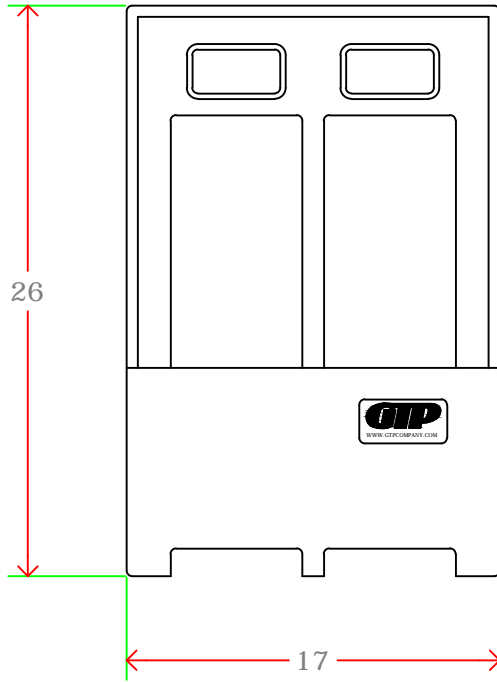
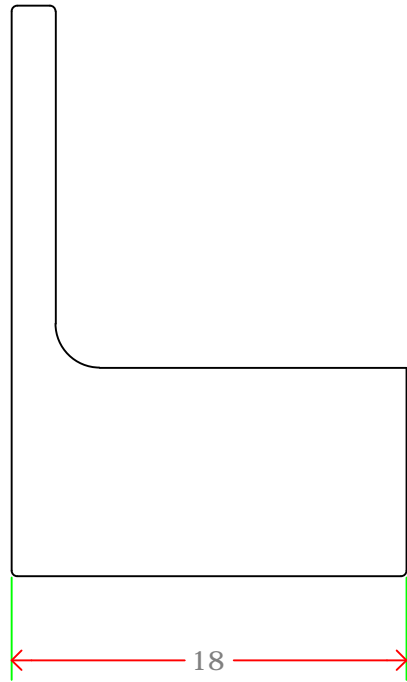
Date: 1/1/2016 Scale: NTS Rev.: A

Description:  
GRE AUDIBLE ALARM AND DRY CONTACT

Model:  
-ALM



NOTICE: This drawing and its contents are for the specific use of GTP customers only. It is not to be duplicated or copied without expressed written consent of General Treatment Products, Inc. We reserve the right to modify this drawing without notice.



MATERIALS OF CONSTRUCTION:  
1/4" LD GRAY POLYETHYLENE

|             |    |         |   |     |   |    |
|-------------|----|---------|---|-----|---|----|
| Capacity:   | 12 | Gallons |   |     |   |    |
| Max Temp.:  | 85 | F       |   |     |   |    |
| Max Press.: | 0  | PSI     |   |     |   |    |
| Weight:     | 22 | Lbs.    |   |     |   |    |
| Voltage.:   | x  | VAC     | x | Phs | x | Hz |
| FLA.:       | x  | amps    |   |     |   |    |

|    |   |   |
|----|---|---|
| 20 | x | x |
| 19 | x | x |
| 18 | x | x |
| 17 | x | x |
| 16 | x | x |
| 15 | x | x |
| 14 | x | x |
| 13 | x | x |
| 12 | x | x |
| 11 | x | x |
| 10 | x | x |
| 9  | x | x |
| 8  | x | x |
| 7  | x | x |
| 6  | x | x |
| 5  | x | x |
| 4  | x | x |
| 3  | x | x |
| 2  | x | x |
| 1  | x | x |

| #   | PART        | DESCRIPTION |
|-----|-------------|-------------|
| F   | x           | xx/xx/xx    |
| E   | x           | xx/xx/xx    |
| D   | x           | xx/xx/xx    |
| C   | x           | xx/xx/xx    |
| B   | x           | xx/xx/xx    |
| REV | DESCRIPTION | DATE        |

General Treatment Products, Inc.  
PO Box 8697, Brea, CA 92822  
Phone: 714) 257-9165 <http://www.gtpcompany.com>  
Fax: 714) 257-9215 [customerservice@gtpcompany.com](mailto:customerservice@gtpcompany.com)

Date: 2/1/2016 Scale: NTS Rev.: A

Description:  
**RESIDENTIAL GLYCOL WALL MOUNT**

Model:  
**MBPE**