

MATERIALS OF CONSTRUCTION:
 ENAMEL PAINTED CARBON STEEL, BRASS,
 316 STAINLESS STEEL

x	x	x	x	x	x	x	x	x
x	x	x	x	x	x	x	x	x
x	x	x	x	x	x	x	x	x
x	x	x	x	x	x	x	x	x
x	x	x	x	x	x	x	x	x
HD-B-2000	6.6"	11.3"	13.3"	80"	8"	7"	x	x
HD-B-1500	6.6"	10.3"	12.3"	60"	7"	6"	x	x
HD-B-1000	6.6"	9.8"	11.8"	50"	6.5"	5"	x	x
MODEL	A	B	C	D	E	F	G	H

DIMENSIONS:

Max Temp.:	105	F
Weight/FLA: 1HP	48 Lbs.	14 amps
Weight/FLA: 1.5HP	53 Lbs.	18 amps
Weight/FLA: 2HP	63 Lbs.	19 amps
Voltage.:	115 VAC	1 Phs 60 Hz
10	x	x
9	x	x
8	x	x
7	x	x
6	x	x
5	x	x
4	x	x
3	x	x
2	x	x
1	x	x

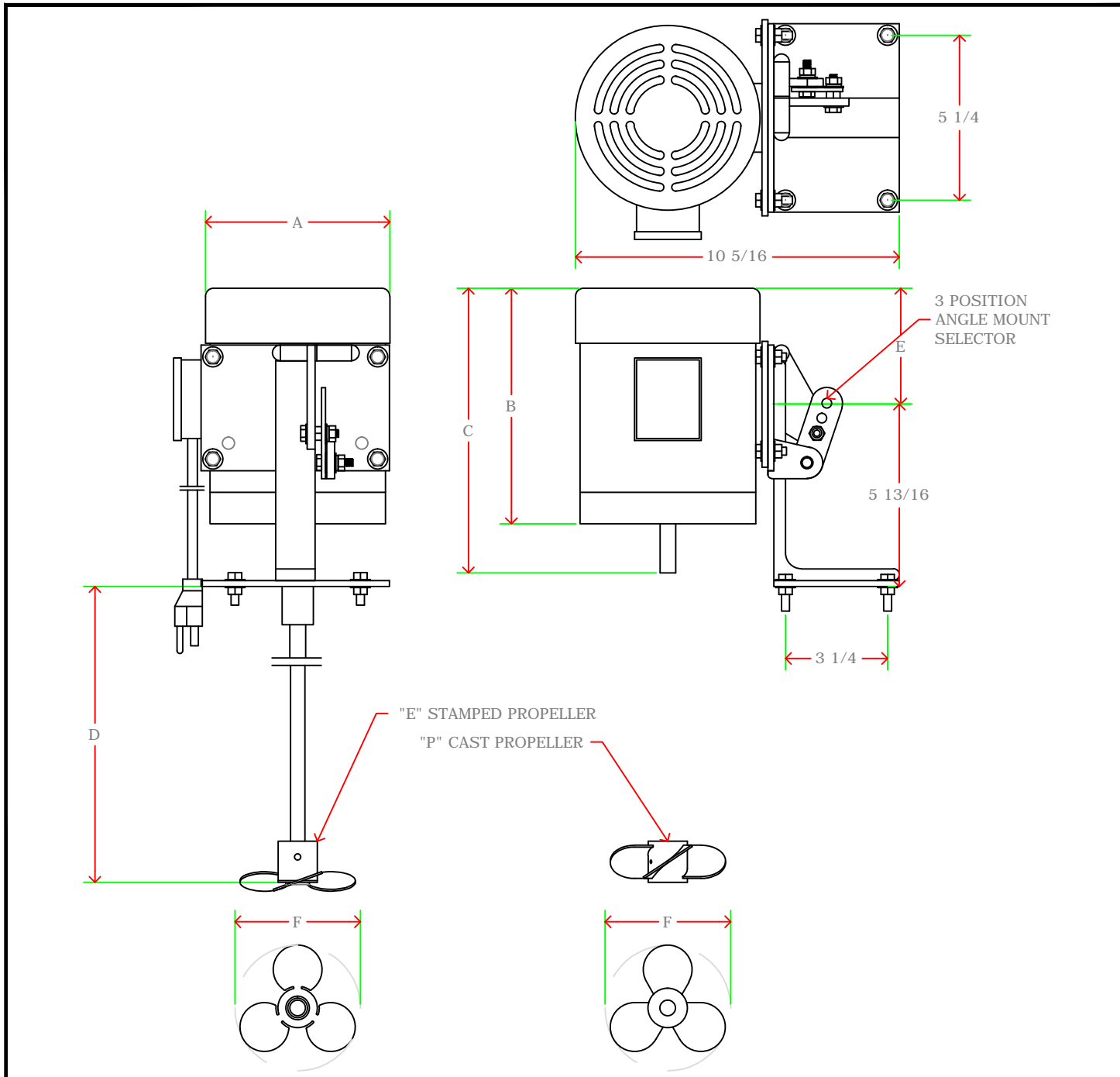
#	PART	DESCRIPTION
F	x	xx/xx/xx
E	x	xx/xx/xx
D	x	xx/xx/xx
C	x	xx/xx/xx
B	x	xx/xx/xx
REV	DESCRIPTION	DATE

General Treatment Products, Inc.
 PO Box 8697, Brea, CA 92822
 Phone: 714) 257-9165 <http://www.gtpcompany.com>
 Fax: 714) 257-9215 customerservice@gtpcompany.com

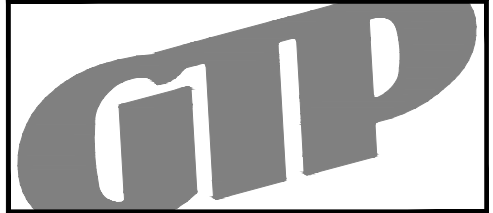
Date: 09/01/13 Scale: NTS Rev.: A

Description:
 HD BRACKET MOUNT MIXER

Model:
 HD-B-xxxx



NOTICE: This drawing and its contents are for the specific use of GTP customers only. It is not to be duplicated or copied without expressed written consent of General Treatment Products, Inc. We reserve the right to modify this drawing without notice.



MATERIALS OF CONSTRUCTION:
 ENAMEL PAINTED CARBON STEEL, BRASS,
 316 STAINLESS STEEL

x	x	x	x	x	x	x	x	x	x
x	x	x	x	x	x	x	x	x	x
x	x	x	x	x	x	x	x	x	x
x	x	x	x	x	x	x	x	x	x
x	x	x	x	x	x	x	x	x	x
HD-C-2000	6.6"	11.3"	13.3"	80"	8"	7"	x	x	
HD-C-1500	6.6"	10.3"	12.3"	60"	7"	6"	x	x	
HD-C-1000	6.6"	9.8"	11.8"	50"	6.5"	5"	x	x	
MODEL	A	B	C	D	E	F	G	H	

DIMENSIONS:

Max Temp.:	105 F
Weight/FLA: 1HP	48 Lbs. 14 amps
Weight/FLA: 1.5HP	53 Lbs. 18 amps
Weight/FLA: 2HP	63 Lbs. 19 amps
Voltage.:	115 VAC 1 Phs 60 Hz

10	x	x
9	x	x
8	x	x
7	x	x
6	x	x
5	x	x
4	x	x
3	x	x
2	x	x
1	x	x

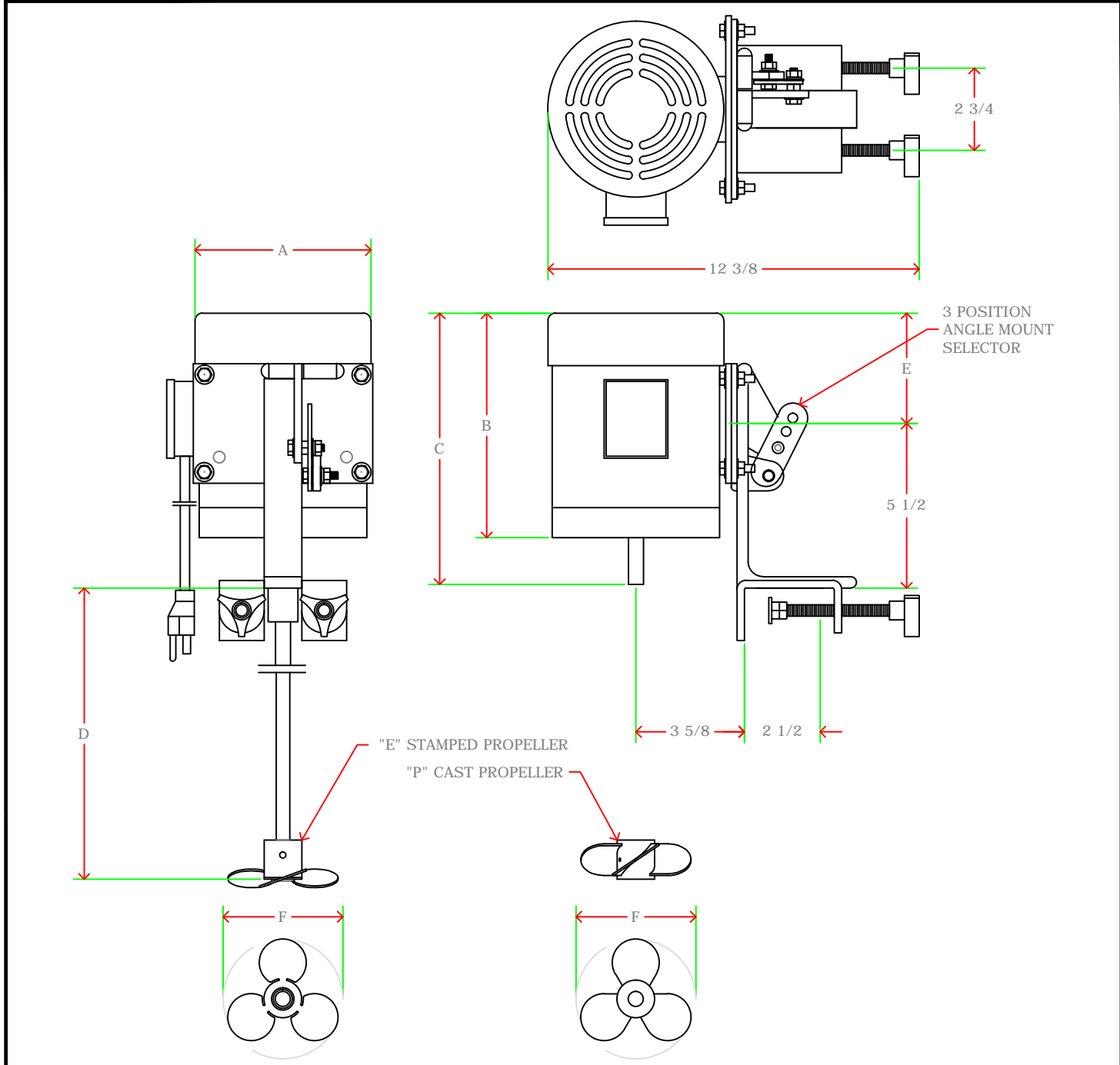
#	PART	DESCRIPTION
F	x	xx/xx/xx
E	x	xx/xx/xx
D	x	xx/xx/xx
C	x	xx/xx/xx
B	x	xx/xx/xx
REV	DESCRIPTION	DATE

General Treatment Products, Inc.
 PO Box 8697, Brea, CA 92822
 Phone: 714) 257-9165 <http://www.gtpcompany.com>
 Fax: 714) 257-9215 customerservice@gtpcompany.com

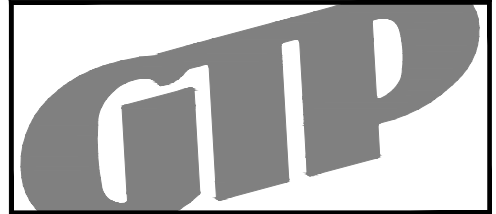
Date: 09/01/13 Scale: NTS Rev.: A

Description:
HD CLAMP MOUNT ASSEMBLY

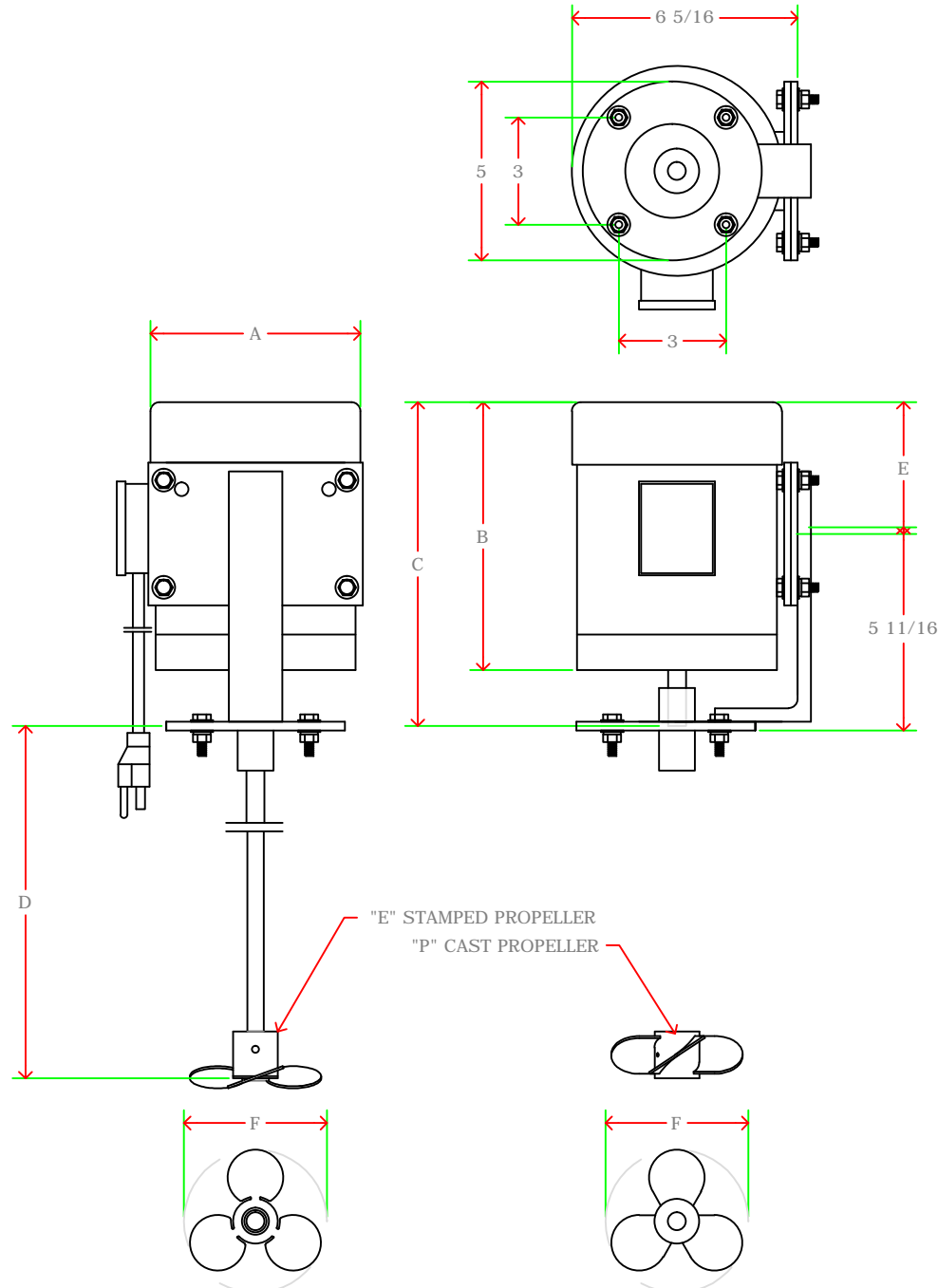
Model:
HD-C-xxxx



NOTICE: This drawing and it's contents are for the specific use of GTP customers only. It is not to be duplicated or copied without expressed written concent or General Treatment Products, Inc. We reserve the right to modify this drawing without notice.



MATERIALS OF CONSTRUCTION:
 ENAMEL PAINTED CARBON STEEL, BRASS,
 316 STAINLESS STEEL



x	x	x	x	x	x	x	x	x
x	x	x	x	x	x	x	x	x
x	x	x	x	x	x	x	x	x
x	x	x	x	x	x	x	x	x
x	x	x	x	x	x	x	x	x
HD-F-2000	6.6"	11.3"	13.3"	80"	8"	7"	x	x
HD-F-1500	6.6"	10.3"	12.3"	60"	7"	6"	x	x
HD-F-1000	6.6"	9.8"	11.8"	50"	6.5"	5"	x	x
MODEL	A	B	C	D	E	F	G	H

DIMENSIONS:

Max Temp.:	105	F
Weight/FLA: 1HP	48 Lbs.	14 amps
Weight/FLA: 1.5HP	53 Lbs.	18 amps
Weight/FLA: 2HP	63 Lbs.	19 amps
Voltage.:	115 VAC	1 Phs 60 Hz
10	x	x
9	x	x
8	x	x
7	x	x
6	x	x
5	x	x
4	x	x
3	x	x
2	x	x
1	x	x

#	PART	DESCRIPTION
F	x	xx/xx/xx
E	x	xx/xx/xx
D	x	xx/xx/xx
C	x	xx/xx/xx
B	x	xx/xx/xx
REV	DESCRIPTION	DATE

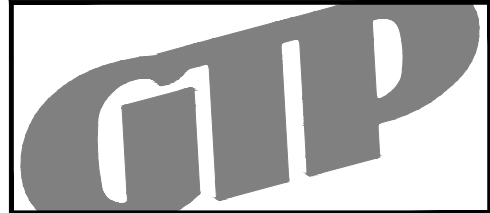
General Treatment Products, Inc.
 PO Box 8697, Brea, CA 92822
 Phone: 714) 257-9165 <http://www.gtpcompany.com>
 Fax: 714) 257-9215 customerservice@gtpcompany.com

Date: 09/01/13 Scale: NTS Rev.: A

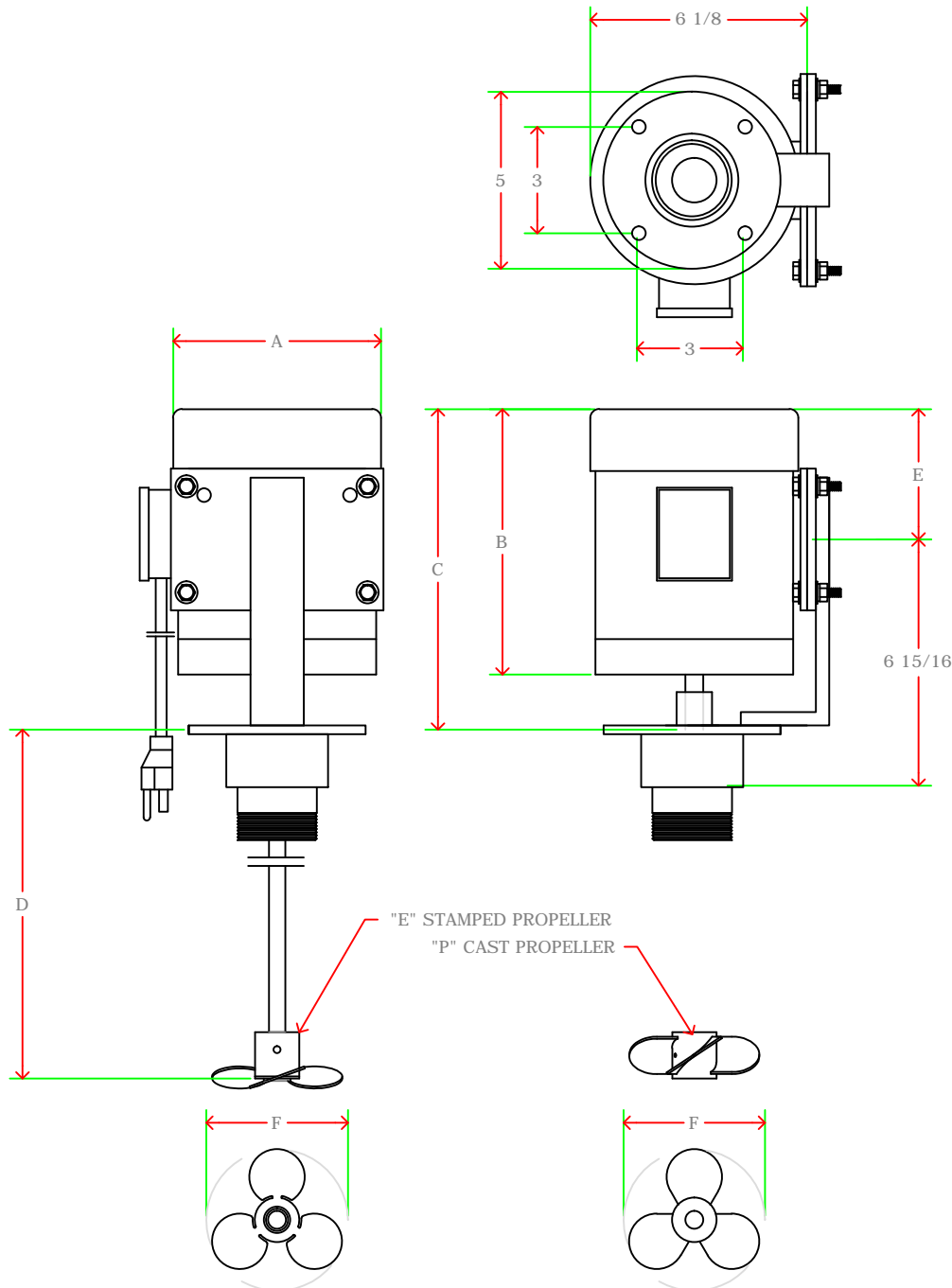
Description:
HD FLANGE MOUNT MIXER

Model:
HD-F-xxxx

NOTICE: This drawing and its contents are for the specific use of GTP customers only. It is not to be duplicated or copied without expressed written consent of General Treatment Products, Inc. We reserve the right to modify this drawing without notice.



MATERIALS OF CONSTRUCTION:
**ENAMEL PAINTED CARBON STEEL, BRASS,
 316 STAINLESS STEEL**



x	x	x	x	x	x	x	x	x
x	x	x	x	x	x	x	x	x
x	x	x	x	x	x	x	x	x
x	x	x	x	x	x	x	x	x
x	x	x	x	x	x	x	x	x
HD-T-2000	6.6"	11.3"	13.3"	80"	8"	7"	x	x
HD-T-1500	6.6"	10.3"	12.3"	60"	7"	6"	x	x
HD-T-1000	6.6"	9.8"	11.8"	50"	6.5"	5"	x	x
MODEL	A	B	C	D	E	F	G	H

DIMENSIONS:

Max Temp.:	105 F
Weight/FLA: 1HP	48 Lbs. 14 amps
Weight/FLA: 1.5HP	53 Lbs. 18 amps
Weight/FLA: 2HP	63 Lbs. 19 amps
Voltage.:	115 VAC 1 Phs 60 Hz
10	x x
9	x x
8	x x
7	x x
6	x x
5	x x
4	x x
3	x x
2	x x
1	x x

#	PART	DESCRIPTION
F	x	xx/xx/xx
E	x	xx/xx/xx
D	x	xx/xx/xx
C	x	xx/xx/xx
B	x	xx/xx/xx
REV	DESCRIPTION	DATE

General Treatment Products, Inc.
 PO Box 8697, Brea, CA 92822
 Phone: 714) 257-9165 <http://www.gtpcompany.com>
 Fax: 714) 257-9215 customerservice@gtpcompany.com

Date: 09/01/13 Scale: NTS Rev.: A

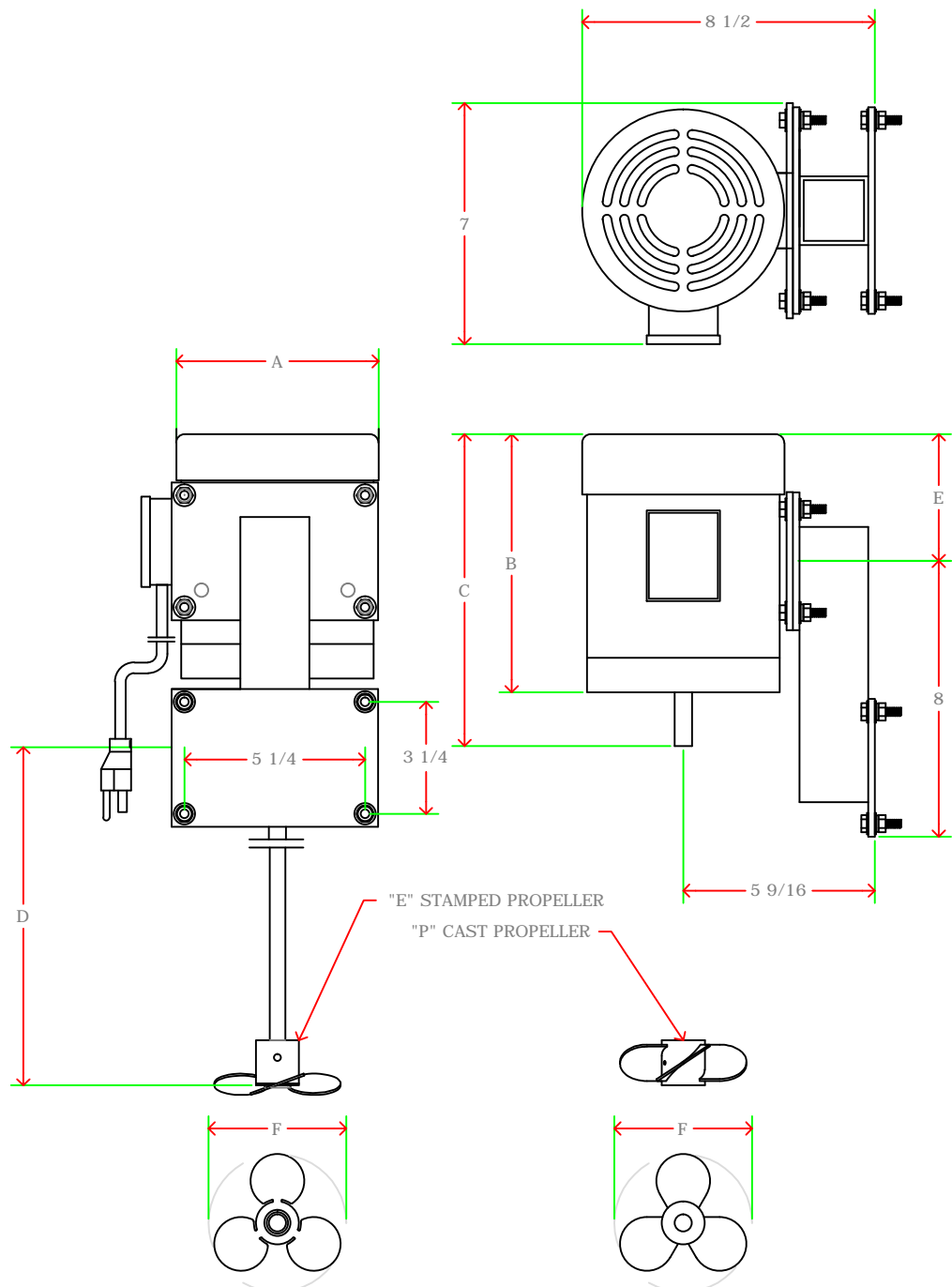
Description:
HD THREAD MOUNT MIXER

Model:
HD-T-xxxx

NOTICE: This drawing and it's contents are for the specific use of GTP customers only. It is not to be duplicated or copied without expressed written concent or General Treatment Products, Inc. We reserve the right to modify this drawing without notice.



MATERIALS OF CONSTRUCTION:
 ENAMEL PAINTED CARBON STEEL, BRASS,
 316 STAINLESS STEEL



x	x	x	x	x	x	x	x	x	x
x	x	x	x	x	x	x	x	x	x
x	x	x	x	x	x	x	x	x	x
x	x	x	x	x	x	x	x	x	x
x	x	x	x	x	x	x	x	x	x
HD-X-2000	6.6"	11.3"	13.3"	80"	8"	7"	x	x	
HD-X-1500	6.6"	10.3"	12.3"	60"	7"	6"	x	x	
HD-X-1000	6.6"	9.8"	11.8"	50"	6.5"	5"	x	x	
MODEL	A	B	C	D	E	F	G	H	

DIMENSIONS:

Max Temp.: 105 F

Weight/FLA: 1HP 48 Lbs. 14 amps

Weight/FLA: 1.5HP 53 Lbs. 18 amps

Weight/FLA: 2HP 63 Lbs. 19 amps

Voltage.: 115 VAC 1 Phs 60 Hz

10	x	x							
9	x		x						
8	x		x						
7	x		x						
6	x		x						
5	x		x						
4	x		x						
3	x		x						
2	x		x						
1	x		x						

#	PART	DESCRIPTION
F	x	xx/xx/xx
E	x	xx/xx/xx
D	x	xx/xx/xx
C	x	xx/xx/xx
B	x	xx/xx/xx
REV	DESCRIPTION	DATE

General Treatment Products, Inc.
 PO Box 8697, Brea, CA 92822
 Phone: 714) 257-9165 <http://www.gtpcompany.com>
 Fax: 714) 257-9215 customerservice@gtpcompany.com

Date: 09/01/13 Scale: NTS Rev.: A

Description:
HD TANK STAND MOUNT MIXER

Model:
HD-X-xxxx

NOTICE: This drawing and its contents are for the specific use of GTP customers only. It is not to be duplicated or copied without expressed written consent of General Treatment Products, Inc. We reserve the right to modify this drawing without notice.