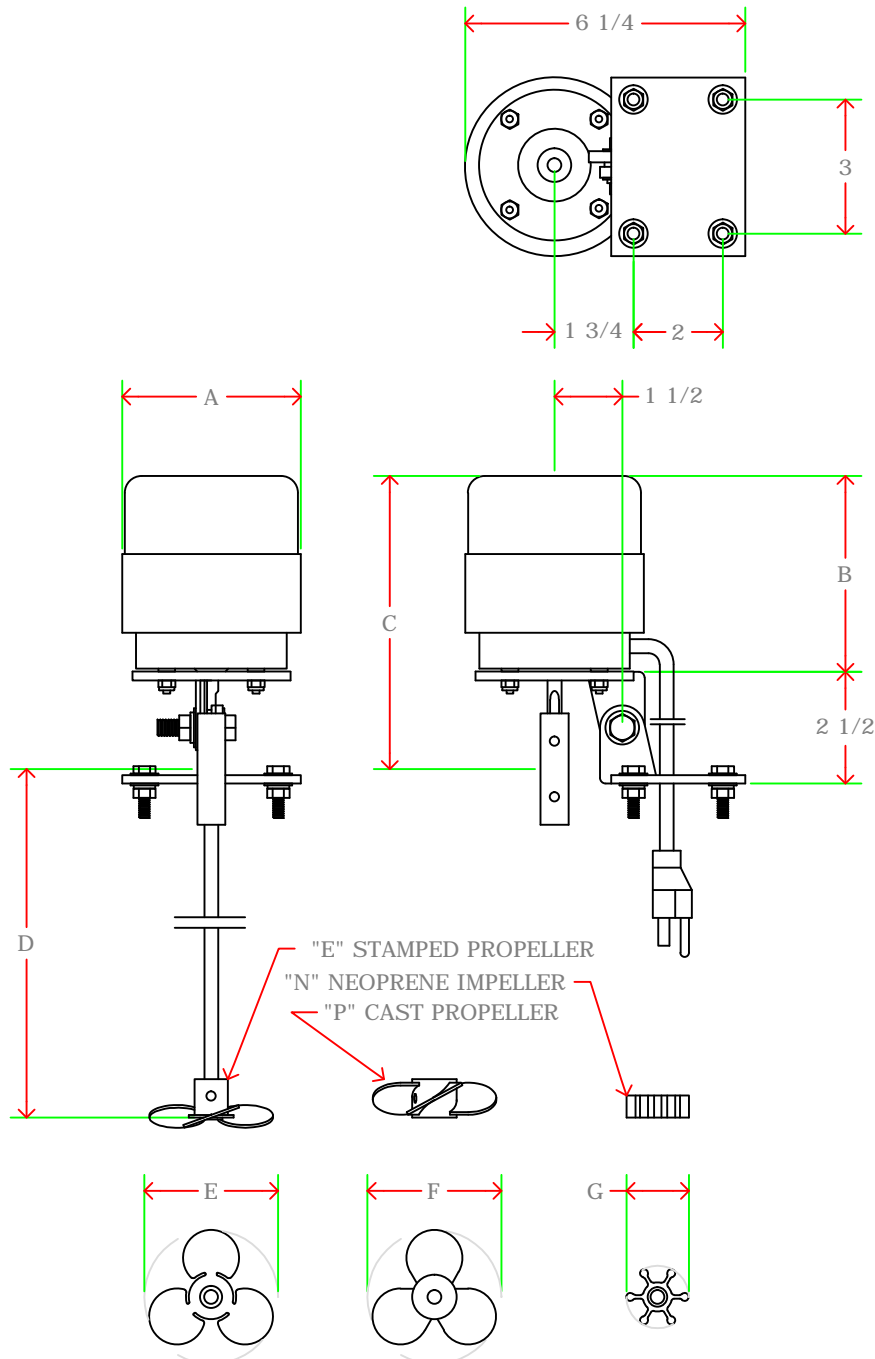


MATERIALS OF CONSTRUCTION:
**ENAMEL PAINTED CARBON STEEL, BRASS,
 316 STAINLESS STEEL**



x	x	x	x	x	x	x	x	x	x
x	x	x	x	x	x	x	x	x	x
x	x	x	x	x	x	x	x	x	x
x	x	x	x	x	x	x	x	x	x
MH-B-0066	4"	4.4"	6.6"	32"	3"	1.4"	x	x	
MH-B-0033	3.8"	3"	5.7"	28"	2"	1.4"	x	x	
MH-B-0020	3.8"	2.9"	5.6"	22"	2"	1.4"	x	x	
MH-B-0014	3.8"	2.4"	5"	16"	2"	1.4"	x	x	
MODEL	A	B	C	D	E	F	G	H	

DIMENSIONS:

Max Temp.:	105	F							
Weight/FLA: 1/70HP	9	Lbs.	0.7	amps					
Weight/FLA: 1/50HP	10	Lbs.	1.0	amps					
Weight/FLA: 1/30HP	11	Lbs.	1.1	amps					
Weight/FLA: 1/15HP	11	Lbs.	2.2	amps					
Voltage.:	115	VAC	1	Phs	60	Hz			
10	x		x						
9	x		x						
8	x		x						
7	x		x						
6	x		x						
5	x		x						
4	x		x						
3	x		x						
2	x		x						
1	x		x						

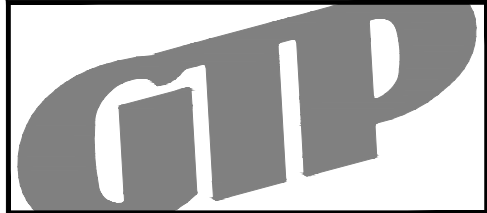
#	PART	DESCRIPTION
F	x	xx/xx/xx
E	x	xx/xx/xx
D	x	xx/xx/xx
C	x	xx/xx/xx
B	x	xx/xx/xx
REV	DESCRIPTION	DATE

General Treatment Products, Inc.
 PO Box 8697, Brea, CA 92822
 Phone: 714) 257-9165 <http://www.gtpcompany.com>
 Fax: 714) 257-9215 customerservice@gtpcompany.com

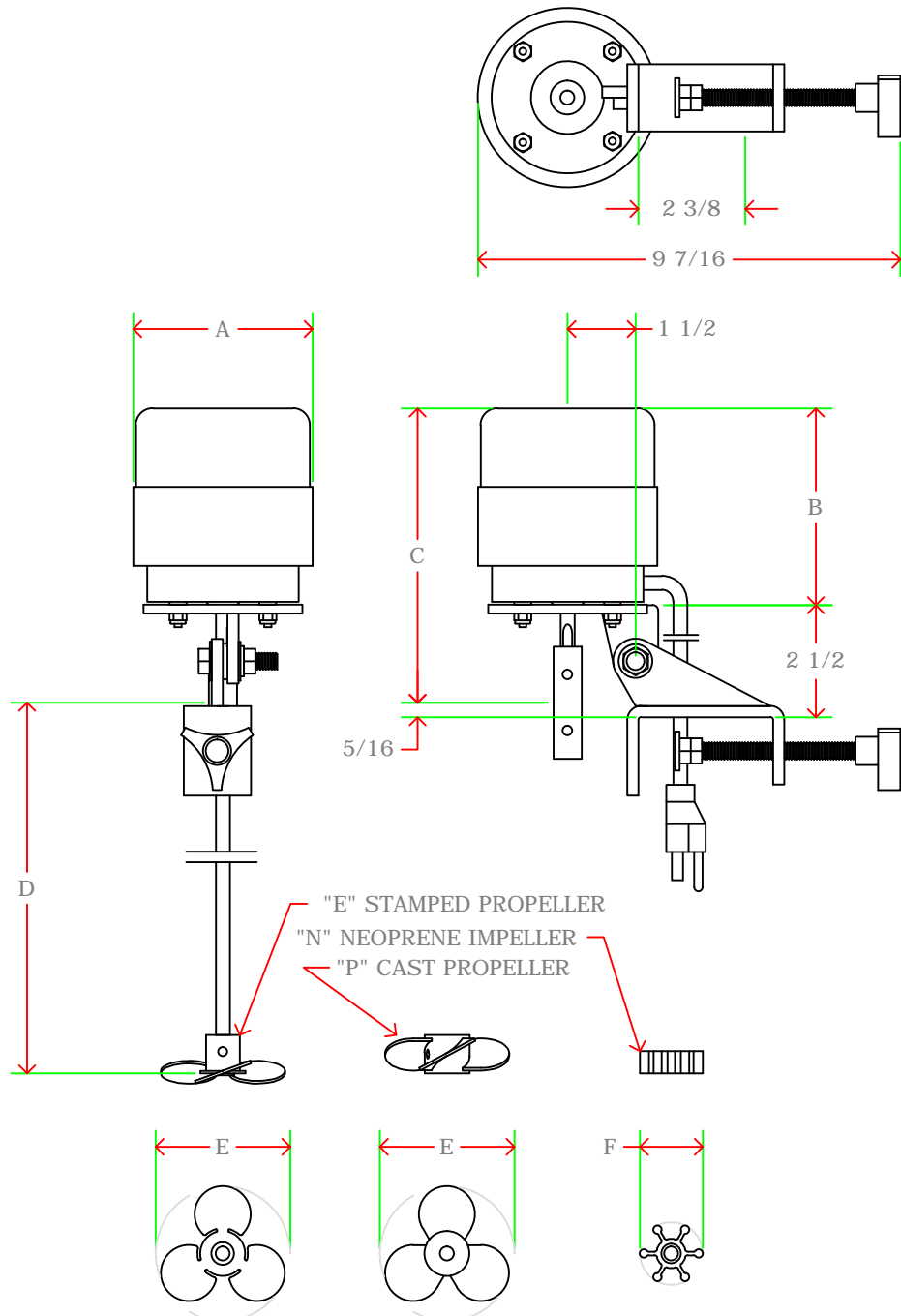
Date: xx/xx/xx Scale: NTS Rev.: A

Description:
MH BRACKET MOUNT MIXER

Model:
MH-B-xxxx



MATERIALS OF CONSTRUCTION:
 ENAMEL PAINTED CARBON STEEL, BRASS,
 316 STAINLESS STEEL



x	x	x	x	x	x	x	x	x
x	x	x	x	x	x	x	x	x
x	x	x	x	x	x	x	x	x
x	x	x	x	x	x	x	x	x
MH-C-0066	4"	4.4"	6.6"	32"	3"	1.4"	x	x
MH-C-0033	3.8"	3"	5.7"	28"	2"	1.4"	x	x
MH-C-0020	3.8"	2.9"	5.6"	22"	2"	1.4"	x	x
MH-C-0014	3.8"	2.4"	5"	16"	2"	1.4"	x	x
MODEL	A	B	C	D	E	F	G	H

DIMENSIONS:

Max Temp.:	105	F
Weight/FLA: 1/70HP	9	Lbs. 0.7 amps
Weight/FLA: 1/50HP	10	Lbs. 1.0 amps
Weight/FLA: 1/30HP	11	Lbs. 1.1 amps
Weight/FLA: 1/15HP	11	Lbs. 2.2 amps
Voltage.:	115	VAC 1 Phs 60 Hz
10	x	x
9	x	x
8	x	x
7	x	x
6	x	x
5	x	x
4	x	x
3	x	x
2	x	x
1	x	x

#	PART	DESCRIPTION
F	x	xx/xx/xx
E	x	xx/xx/xx
D	x	xx/xx/xx
C	x	xx/xx/xx
B	x	xx/xx/xx
REV	DESCRIPTION	DATE

General Treatment Products, Inc.
 PO Box 8697, Brea, CA 92822
 Phone: 714) 257-9165 <http://www.gtpcompany.com>
 Fax: 714) 257-9215 customerservice@gtpcompany.com

Date: 09/01/13 Scale: NTS Rev.: A

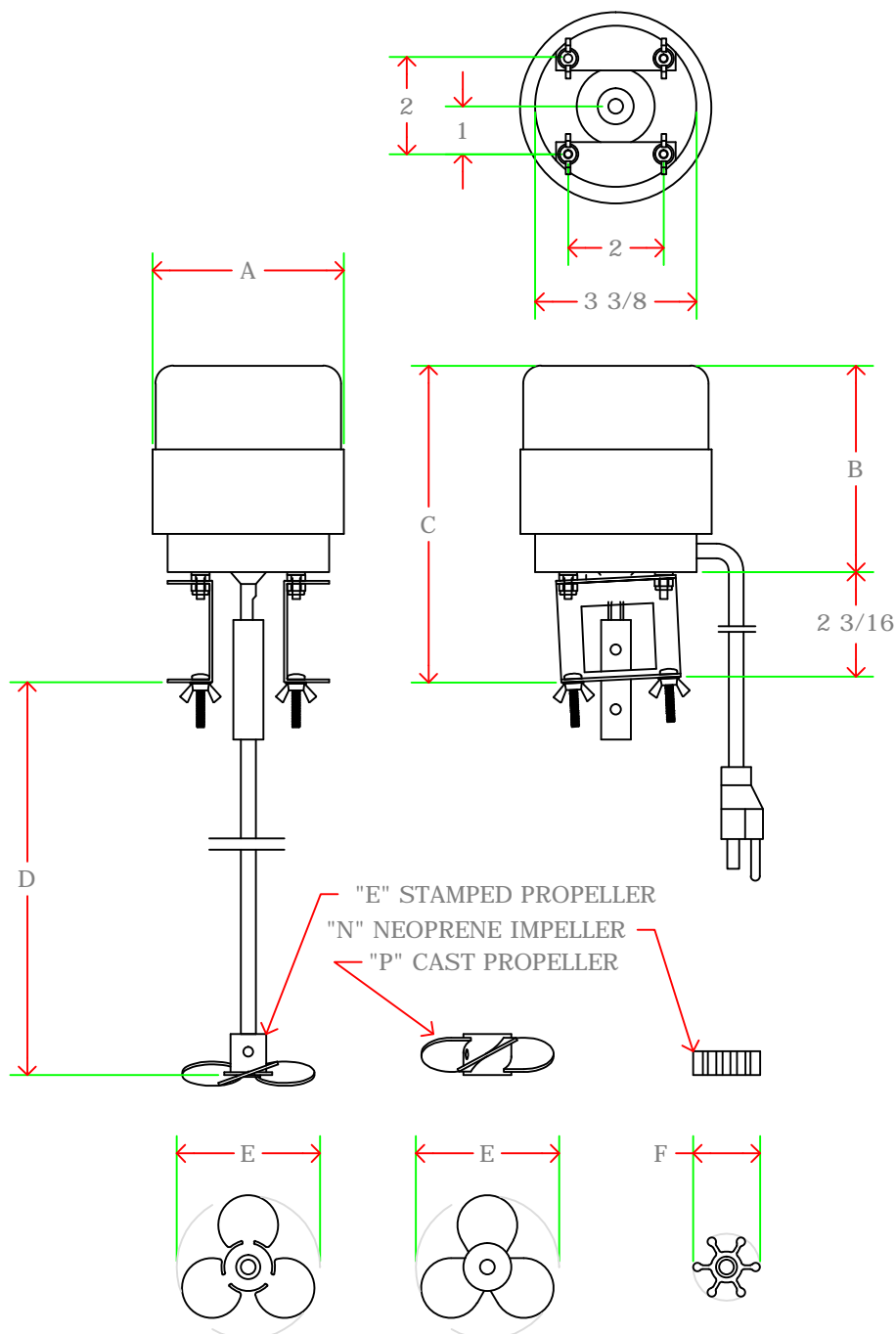
Description:
 MH CLAMP MOUNT MIXER

Model:
 MH-C-xxxx

NOTICE: This drawing and its contents are for the specific use of GTP customers only. It is not to be duplicated or copied without expressed written consent of General Treatment Products, Inc. We reserve the right to modify this drawing without notice.



MATERIALS OF CONSTRUCTION:
 ENAMEL PAINTED CARBON STEEL, BRASS,
 316 STAINLESS STEEL



x	x	x	x	x	x	x	x	x
x	x	x	x	x	x	x	x	x
x	x	x	x	x	x	x	x	x
x	x	x	x	x	x	x	x	x
MH-F-0066	4"	4.4"	6.6"	32"	3"	1.4"	x	x
MH-F-0033	3.8"	3"	5.7"	28"	2"	1.4"	x	x
MH-F-0020	3.8"	2.9"	5.6"	22"	2"	1.4"	x	x
MH-F-0014	3.8"	2.4"	5"	16"	2"	1.4"	x	x
MODEL	A	B	C	D	E	F	G	H

DIMENSIONS:

Max Temp.:	105	F
Weight/FLA: 1/70HP	9	Lbs. 0.7 amps
Weight/FLA: 1/50HP	10	Lbs. 1.0 amps
Weight/FLA: 1/30HP	11	Lbs. 1.1 amps
Weight/FLA: 1/15HP	11	Lbs. 2.2 amps
Voltage.:	115	VAC 1 Phs 60 Hz

10	x	x
9	x	x
8	x	x
7	x	x
6	x	x
5	x	x
4	x	x
3	x	x
2	x	x
1	x	x

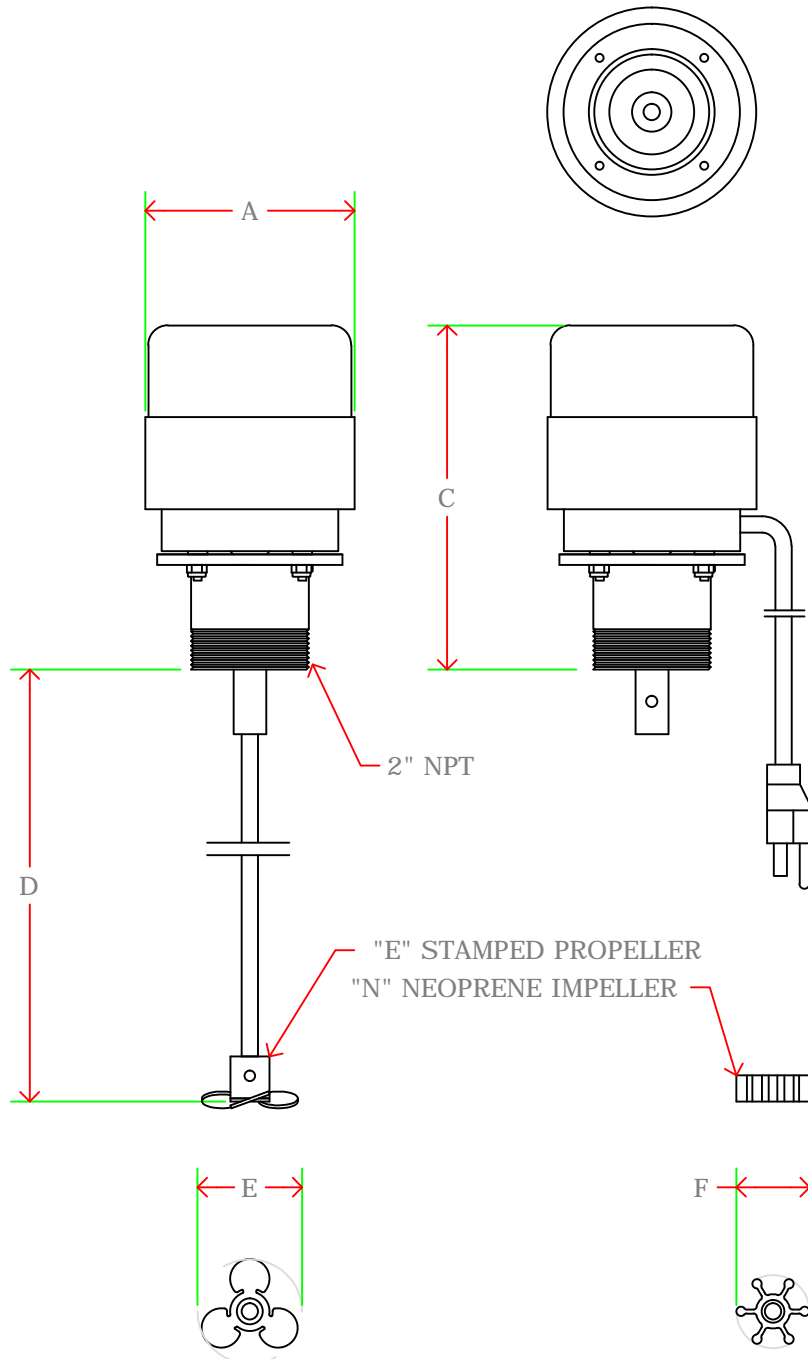
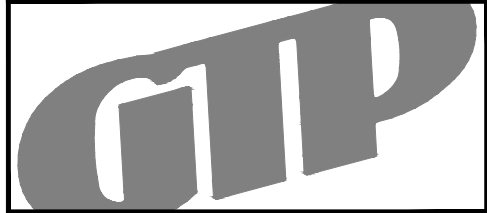
#	PART	DESCRIPTION
F	x	xx/xx/xx
E	x	xx/xx/xx
D	x	xx/xx/xx
C	x	xx/xx/xx
B	x	xx/xx/xx
REV	DESCRIPTION	DATE

General Treatment Products, Inc.
 PO Box 8697, Brea, CA 92822
 Phone: 714) 257-9165 <http://www.gtpcompany.com>
 Fax: 714) 257-9215 customerservice@gtpcompany.com

Date: 09/01/13 Scale: NTS Rev.: A

Description:
MH FLANGE MOUNT MIXER

Model:
MH-F-xxxx



MATERIALS OF CONSTRUCTION:
 ENAMEL PAINTED CARBON STEEL, BRASS,
 316 STAINLESS STEEL

x	x	x	x	x	x	x	x	x	x
x	x	x	x	x	x	x	x	x	x
x	x	x	x	x	x	x	x	x	x
x	x	x	x	x	x	x	x	x	x
MH-T-0066	4"	4.4"	6.6"	32"	2"	1.4"	x	x	
MH-T-0033	3.8"	3"	5.7"	28"	2"	1.4"	x	x	
MH-T-0020	3.8"	2.9"	5.6"	22"	2"	1.4"	x	x	
MH-T-0014	3.8"	2.4"	5"	16"	2"	1.4"	x	x	

MODEL A B C D E F G H

DIMENSIONS:

Max Temp.:	105	F
Weight/FLA: 1/70HP	9	Lbs. 0.7 amps
Weight/FLA: 1/50HP	10	Lbs. 1.0 amps
Weight/FLA: 1/30HP	11	Lbs. 1.1 amps
Weight/FLA: 1/15HP	11	Lbs. 2.2 amps
Voltage.:	115	VAC 1 Phs 60 Hz
10	x	x
9	x	x
8	x	x
7	x	x
6	x	x
5	x	x
4	x	x
3	x	x
2	x	x
1	x	x

#	PART	DESCRIPTION
F	x	xx/xx/xx
E	x	xx/xx/xx
D	x	xx/xx/xx
C	x	xx/xx/xx
B	x	xx/xx/xx

REV DESCRIPTION DATE

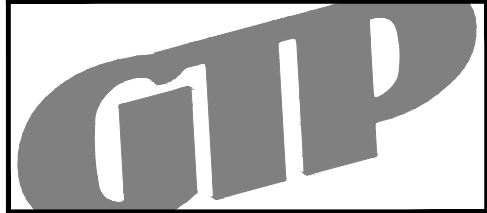
General Treatment Products, Inc.
 PO Box 8697, Brea, CA 92822
 Phone: 714) 257-9165 http://www.gtpcompany.com
 Fax: 714) 257-9215 customerservice@gtpcompany.com

Date: 09/01/13 Scale: NTS Rev.: A

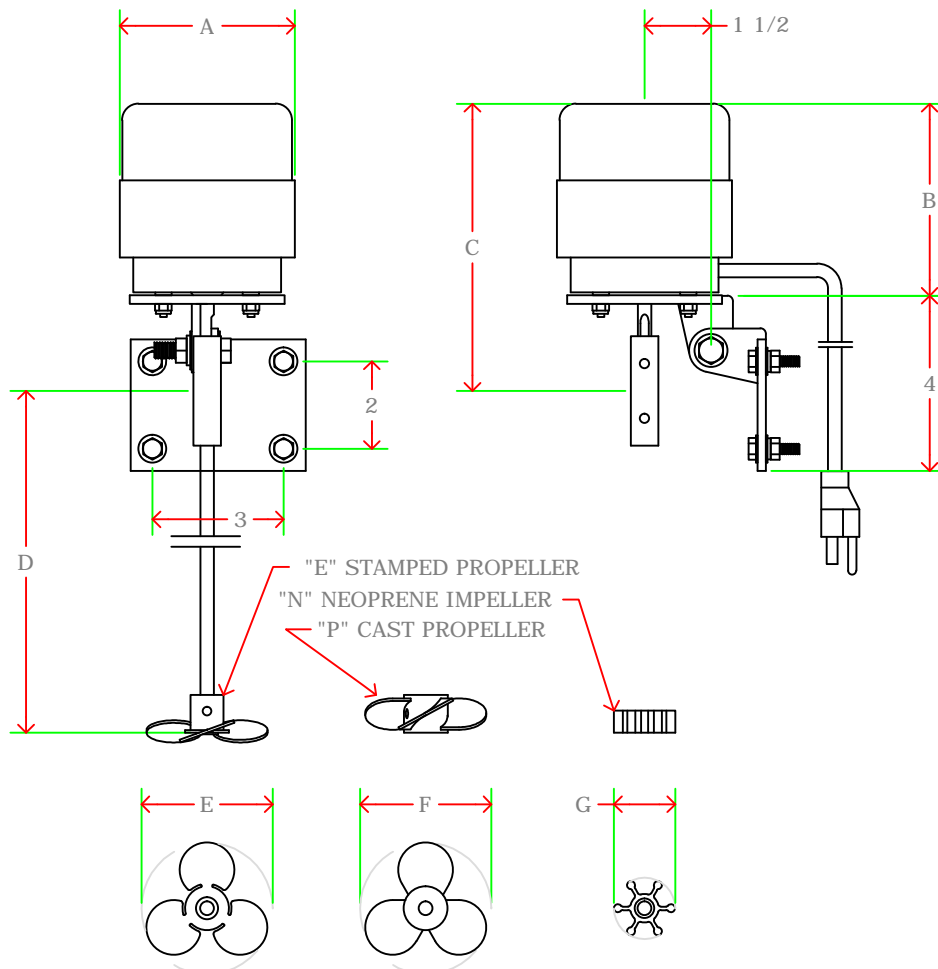
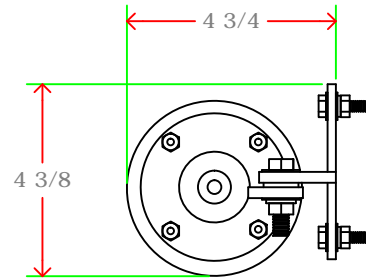
Description:
MH THREAD MOUNT MIXER

Model:
MH-T-xxxx

NOTICE: This drawing and it's contents are for the specific use of GTP customers only. It is not to be duplicated or copied without expressed written concent or General Treatment Products, Inc. We reserve the right to modify this drawing without notice.



MATERIALS OF CONSTRUCTION:
 ENAMEL PAINTED CARBON STEEL, BRASS,
 316 STAINLESS STEEL



x	x	x	x	x	x	x	x	x
x	x	x	x	x	x	x	x	x
x	x	x	x	x	x	x	x	x
x	x	x	x	x	x	x	x	x
MH-X-0066	4"	4.4"	6.6"	32"	3"	1.4"	x	x
MH-X-0033	3.8"	3"	5.7"	28"	2"	1.4"	x	x
MH-X-0020	3.8"	2.9"	5.6"	22"	2"	1.4"	x	x
MH-X-0014	3.8"	2.4"	5"	16"	2"	1.4"	x	x
MODEL	A	B	C	D	E	F	G	H

DIMENSIONS:

Max Temp.:	105	F
Weight/FLA: 1/70HP	9	Lbs. 0.7 amps
Weight/FLA: 1/50HP	10	Lbs. 1.0 amps
Weight/FLA: 1/30HP	11	Lbs. 1.1 amps
Weight/FLA: 1/15HP	11	Lbs. 2.2 amps
Voltage.:	115	VAC 1 Phs 60 Hz
10	x	x
9	x	x
8	x	x
7	x	x
6	x	x
5	x	x
4	x	x
3	x	x
2	x	x
1	x	x

#	PART	DESCRIPTION
F	x	xx/xx/xx
E	x	xx/xx/xx
D	x	xx/xx/xx
C	x	xx/xx/xx
B	x	xx/xx/xx
REV	DESCRIPTION	DATE

General Treatment Products, Inc.
 PO Box 8697, Brea, CA 92822
 Phone: 714) 257-9165 <http://www.gtpcompany.com>
 Fax: 714) 257-9215 customerservice@gtpcompany.com

Date: xx/xx/xx Scale: NTS Rev.: A

Description:
MH TANK STAND MOUNT MIXER

Model:
MH-X-xxxx