



Residential Gly-Pack Feed Systems Operations & Maintenance Manual



**Record Your Model, Serial Number and
Other Information on the back of this document.**

Manufacturing: Bypass & Filter Feeders, Glycol Feed Packages, Separators & Separator Systems, Tanks, Tank Stands, Chemical Batch Mixers, Corrosion Coupon Racks, Packaged Feed Systems and Custom Systems

P.O. Box 8697, Brea, CA 92822-5697 ♦ Phone: 714) 257-9165
113 Viking Ave., Brea, CA 92821 ♦ Fax: 714) 257-9215
www.gtpcompany.com ♦ customerservice@gtpcompany.com

General Treatment Products, Brea, CA 92821,
O&M Manual INSTGLYRES Rev. 0114, Page 1 of 6

Contents	Page
1.0 Introduction	2
2.0 Warranty	2
3.0 Unpacking	3
3.1 Order Verification	3
4.0 Location and Environment	3
5.0 Installation	4
5.1 Connecting to system	4
5.2 Setting the pressure switch	4
6.0 Pressure and Temperature Limitations	4
7.0 Routine Maintenance	5
8.0 Parts Listing	6
9.0 Wiring: Standard	7
10.0 Trouble Shooting	8
11.0 Notes	8
12.0 Product Label, Model Number, Serial Number and Pressure Settings	8

***** WARNING – BEFORE YOU GET STARTED *****

- 1) All fasteners & fittings should be inspected and secured before operation as they may be loosened in transit
- 2) Personnel safety practices should apply at all times
- 3) Safety glasses or face shields and gloves should be worn
- 4) Do not service glycol feed package without disconnecting power
- 5) Close isolation valve and release pressure before servicing any components on the system
- 6) All liquids in system should be drained before servicing

1.0 INTRODUCTION Thank you for choosing General Treatment Products Residential “Gly-Pack” Glycol Feed Package. This automated package comes complete and ready to install. In this document we explain the basics for locating; installing, adjusting, operating and maintaining this glycol feed system. For further information, please contact us at customerservice@gtpcompany.com or call us at the phone number on the cover.

2.0 WARRANTY General Treatment Products “Gly-Pack” Feed Systems are guaranteed for two years from date of shipment against manufacturing defects in material and workmanship that develop in the service for which they are designed. We will repair or replace a defective part of this system when returned to our factory with freight prepaid; providing that the part is found to be defective upon inspection. We assume no liability for labor and/or other expenses in making repairs or adjustments.

3.0 UNPACKING Upon receipt of order, inspect package thoroughly. In the event there was damage incurred in transit you must notify the freight company within **3-5 days of receipt of order**. Once system is inspected for damage and received in good condition, and store indoors until installing.

3.1 ORDER VERIFICATION

MODEL
GRE 07 -E7 -4 /ALM

OPTIONS

-ALM	Audible Alarm & Silence Switch
-MNT	Wall Mounting Bracket
EMS05	Dry Contact Switch Box

Note: See pricing for complete options list

PRESSURE RANGE

	CUT-IN	CUT-OUT	PSID
4	6-20	N/A	5.4 - 16 *
5	20-60	N/A	18 - 48 *
CST	Custom (See back of manual and inside of pressure switch cover to verify).		

* **PSID is preset at the factory and is a 10-20% of set point**

PUMP

E7	0.80GPM AT 40PSI mini diaphragm pump
----	--------------------------------------

SIZE (GALLONS)

07	7.5 gallon PE tank and hinged cover
15	15 gallon PE tank and hinged cover

BASE MODEL

GRE	Glycol home/residential economy package, low level, pressure switch, pump, pressure gauge, mix valve and indicator lights.
-----	--

Note: Not all options and sizes available on all systems. See pricing for standard models.
(*Standard factory setting for pressure switch)

4.0 LOCATION AND ENVIROMENT Although some of the components are NEMA rated, the gear pump, pressure switch and power cord should not be exposed to direct elements. In all cases a shelter, awning or shed needs to be installed or glycol feed packages need to be installed indoors to validate warranty.

5.0 INSTALLATION Once location is decided on, system need to be securely mounted to wall studs with mounting brackets (optional) or to firm level secure. **Be sure that mounting pads/wall studs and anchoring bolts comply with local building codes.**

Glycol feed packages come standard with an 8FT power cord. Power supply with no less than 5 amps should be within 8FT of package. **Extension cords should not be used at anytime.** Systems can be hardwired, if need. Have only an experienced electrician hardwire system. Wiring diagrams are provided in section 9.0.

Security access door, provided, will deter tampering and or improper setting changes. Provided, bolt secure, the security access door can be lock with customer provided padlock.

5.1 CONNECTING TO SYSTEM Glycol feed package should be installed within 5 to 10 feet of system. If system is to close, it is difficult to set low pressure systems. If system is to far, pump outputs will very based on pipe size, elbows and other fittings.

Residential Glycol Feed Packages should be connected to system using a minimum pipe size of ¼" and a isolation valve should be installed for servicing. **DO NOT INSTALL CHECK VALVES OR PRESSURE REDUCING VALVES BETWEEN GLYCOL FEED PACKAGE AND SYSTEM.** The installation of check valve or pressure reducing valves will cause problems with reading system pressure accurately. Material of pipe should be consistent to material of system or from materials limitations chart as stated in section 6.0.

5.2 SETTING THE PRESSURE SWITCH GTP Glycol Feed Packages, when specified, can be factory pre-set to your system requirements. When requested, your factory settings will be listed on label on back of instruction manual and on packing slip.

"GRE Models" To change the setting of the pressure switch: turn adjustment dial on pressure switch clockwise to increase pressure setting and counter-clockwise to reduce pressure setting.

6.0 PRESSURE AND TEMPERATURE LIMITATIONS: Residential Glycol Feeders maximum operating perimeters are 20PSI @ 85F. Some optional fittings, as noted in descriptions, may change limitations, contact factory for assistance.

MATERIAL	MAXIMUM SHORT TERM TEMPERATURE	MAXIMUM OPERATING TEMPERATURE	MAXIMUM OPERATING PRESSURE
Polyethylene (PE)	160°F/69°C	85°F/36°C	N/A
Polyvinylchloride (PVC)	140°F/60°C	85°F/36°C	100PSI/6.9BAR
Chlorinated Polyvinylchloride (CPVC)	180°F/77°C	120°F/49°C	100PSI/6.9BAR
Polypropylene (PP)	180°F/77°C	120°F/49°C	100PSI/6.9BAR
Teflon (PTFE)	200°F/93°C	200°F/93°C	N/A
Carbon Steel (CS)	200°F/93°C	200°F/93°C	150PSI/10.3BAR
Cast Iron (CI)	200°F/93°C	200°F/93°C	150PSI/10.3BAR
Brass (BR)	200°F/93°C	200°F/93°C	150PSI/10.3BAR
Stainless Steel (SS)	200°F/93°C	200°F/93°C	150PSI/10.3BAR

Note: Minimum Fluid Temperature is 50°F/10°C.

7.0 ROUTINE MAINTENANCE Routine maintenance in this section is referred to as checking a system once a month until a maintenance schedule can be determined. **All fasteners should be check for proper operations.** Maintenance and care will depend upon the usage and environment in which the glycol feed package is subject to. The following is the suggested regular maintenance checks required to keep the glycol feed system operating properly.

7.1 TANK AND PLUMBING Periodically check piping, hoses and tank fittings for leaks. Y-strainers and check valves need to be free from debris. Tank should be checked for signs of bulging and cracking.

7.2 GLYCOL PUMP The pump should be inspected for proper operation and output. Unusual noises and leaks need to be corrected immediately. Pump assembly and disassembly should only be done by qualified personnel. Wear items, like seal, carbon bearings, diaphragms and gears need to be inspected and replaced when needed. Contact us for assembly and disassembly.

7.3 PRESSURE SWITCH The only wear item is the contacts. Make sure there are no shorts or wire connections problems.

7.4 GRE GLYCOL MIXING Glycol feed package come supplied with mixing valve near hinge side of cover. Close isolation valve (customer supplied) and open mix valve. Allow contents to stir for 10 to 20 minutes, and then close mix valve. Open isolation valve.

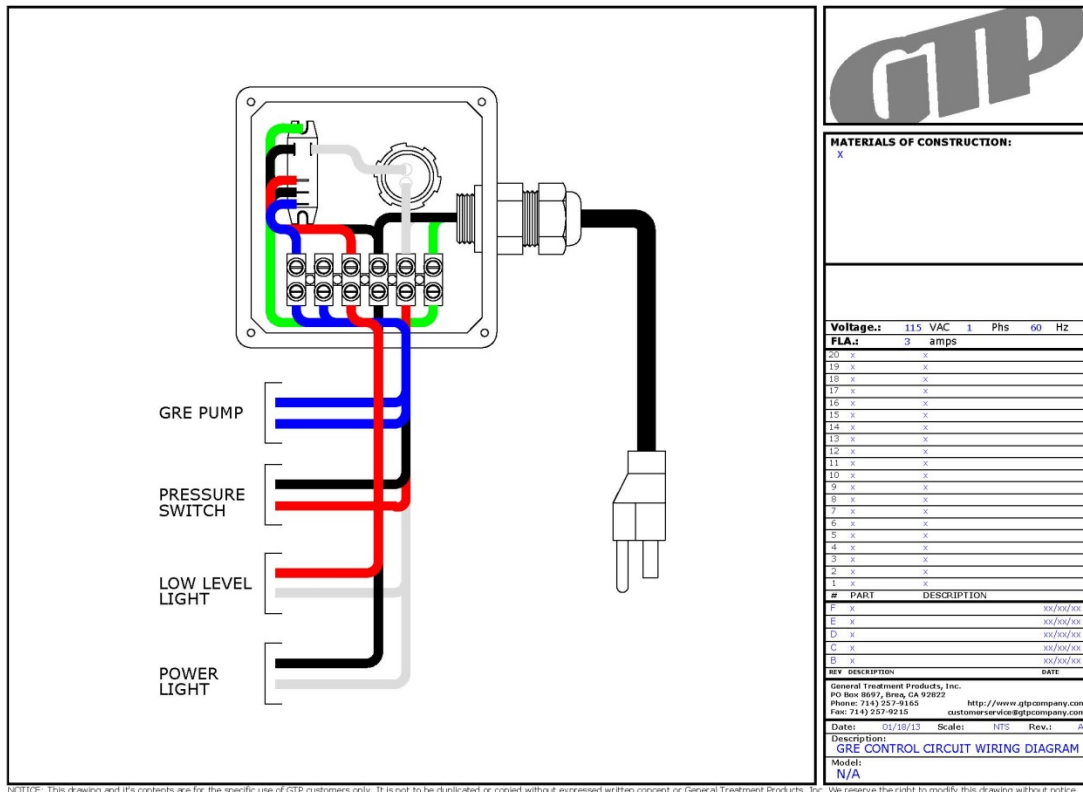
8.0 PARTS LISTING In the following diagrams, the systems are shown with tables itemizing parts that may be replaced in the field. If further breakdown is needed, consult manufacturer's operations manual or call us for assistance.

PART	GRE__	07	15
TANK	RE07	X	
	RE15		X
STAND	MBPE	X	X
DISC. MANIFOLD	0122018A/HM	X	X
	0122027E	X	
SUCTION MANIFOLD	0122028E		X
	GP1.0R	X	X
PRESSURE SWITCH	PS-4	X	X
	PS-5	X	X
CONTROL MODULE	CPE	X	X
PRESSURE GAUGE	PG30	X	X
	PG100	X	X
MIXING BALL VALVE	BV02B	X	X

- Note: Pressure gauge scale depends on pressure switch selected.

9.0 WIRING

Shown is the standard wiring diagram for the GRE Glycol Feed Packages.



See website for detailed image.

10.0 TROUBLE SHOOTING

PROBLEM	POSSIBLE CAUSE / ACTION
Low flow rate	Piping / equipment is dirty or fouled
	Discharge is restricted or undersized
	Gears are worn
Pump runs, but no fluid	Suction piping is restricted or plugged
	Pump suction valve is closed
	Pump is rotating in the wrong direction
Pressure is low	Line is restricted
	Gears are worn
Pump starts and stops pumping	Gears are worn or fouled
	The suction line may be leaking
	Suction piping is restricted or plugged
Excessive noise while pump is in operation	Pump head and gear may be misaligned
	Pump mounting hardware is loose
	System pressure is excessive
Pump does not shut off at low level	Float switch is faulty, defective or damaged
	Low level relay is faulty, defective or damaged
	Wiring is incorrect or shorted
System does not relieve pressure properly	Pressure relief valve is clogged
	Pressure relief valve is set improperly
Pump cycles on and off repetitively	Piping leak on discharge side
	Pressure settings are not adequate for system size pressure

If you are still having trouble, contact us at repairs@gtpcompany.com, or you can call us at the number on the front of the Instruction manual.

11.0 NOTES:

12.0 PRODUCT LABEL:

Model:

Serial Number:
