

Specifications:
All Sch80 PVC full port ball valves, unions, tee and nipples.

Materials of Construction:
Sch40 PVC and Buna-N Seal

Capacity:	15	Pounds
Max. Temp.:	85	°F
Max. Press:	100	PSI
Weight:	8	LBS

12	X	X
11	X	X
10	X	X
9	X	X
8	X	X
7	X	X
6	X	X
5	X	X
4	X	X
3	X	X
2	X	X
1	X	X

#	Part	Description
---	------	-------------


General Treatment Products, Inc.
 Phone: 714-257-9165
 Fax: 714-257-9215
www.gtpcompany.com

Drwn By:	JC
Date:	12/1/10
Scale:	NTS
Rev:	A

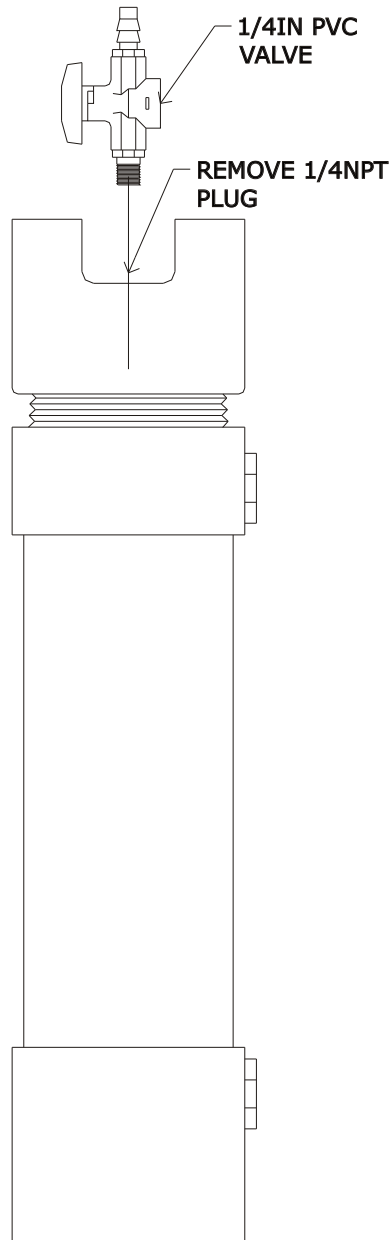
Related Items:	X
-----------------------	---

D	X	X
C	X	X
B	X	X
Rev.	Description	Date

Notes:
1)

Notice
This drawing and its content are for the specific use of GTP customers only. It is not to be duplicated or copied without expressed written content of General Treatment Products, Inc. We Reserve the right to modify this drawing with out notice.

Description:
15 Pound PVC Bromine Feeder
Model:
BR 15



Specifications:
Sch80 PVC body, Teflon Seats

Materials of Construction:
Sch40 PVC and Buna-N Seal

Capacity: N/A
Max. Temp.: 85 °F
Max. Press: 100 PSI
Weight: .05 LBS

12	X	X
11	X	X
10	X	X
9	X	X
8	X	X
7	X	X
6	X	X
5	X	X
4	X	X
3	X	X
2	X	X
1	X	X

#	Part	Description
---	------	-------------



Phone: 714-257-9165
 Fax: 714-257-9215
www.gtpcompany.com

Drwn By: JC
Date: 1/1/11
Scale: NTS
Rev: A

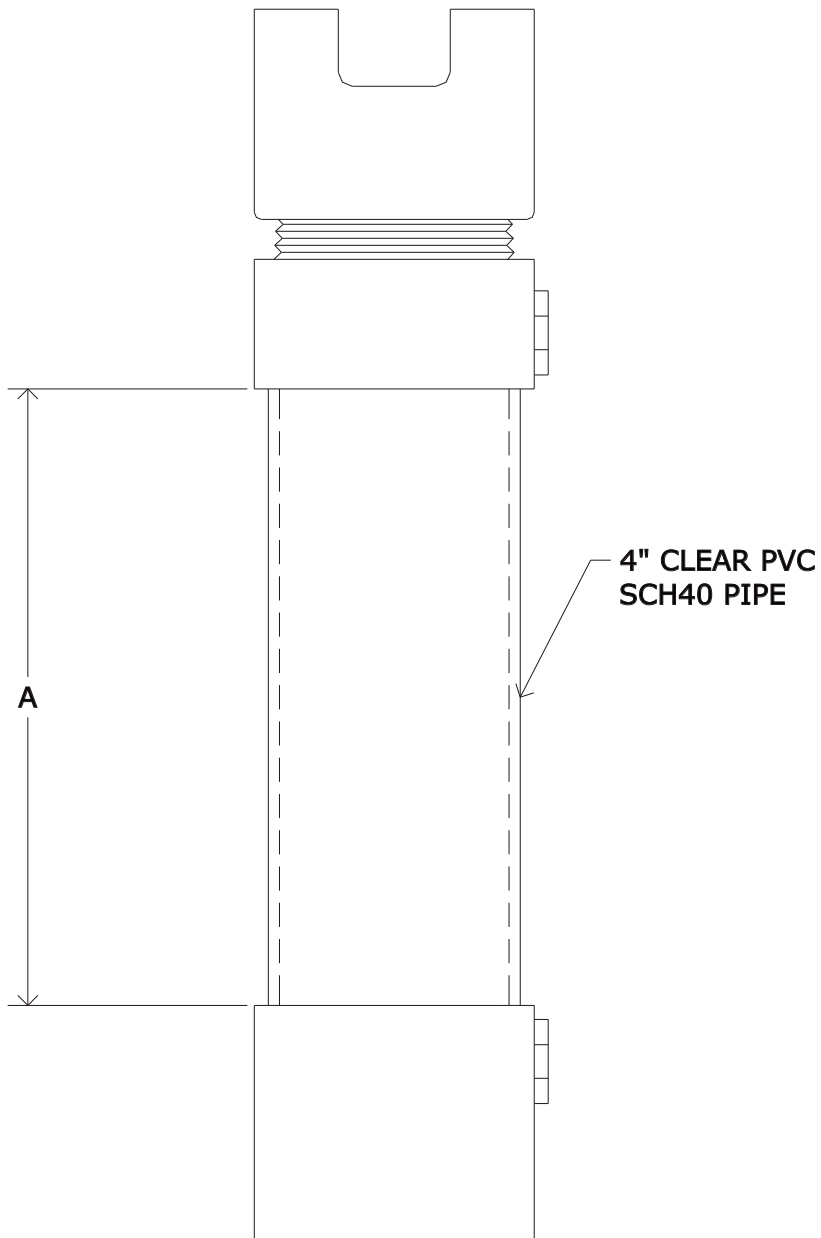
Related Items:
X

Rev.	Description	Date
D	X	X
C	X	X
B	X	X

Notes:
1)

Notice
This drawing and its content are for the specific use of GTP customers only. It is not to be duplicated or copied without expressed written content of General Treatment Products, Inc. We Reserve the right to modify this drawing with out notice.

Description:
Air Release Option for Bromine Feeders
Model:
"-PVCAR"



Specifications:
Sch40 Clear PVC body.

Dimensions: A
BR15-CLR 12"
BR25-CLR 22"

Materials of Construction:
Sch40 PVC and Buna-N Seal

Capacity: N/A

Max. Temp.: 85 °F

Max. Press: 100 PSI

Weight: N/A

12	X	X
11	X	X
10	X	X
9	X	X
8	X	X
7	X	X
6	X	X
5	X	X
4	X	X
3	X	X
2	X	X
1	X	X

#	Part	Description
---	------	-------------



Phone: 714-257-9165
Fax: 714-257-9215
www.gtpcompany.com

Drwn By: JC

Date: 1/1/11

Scale: NTS

Rev: A

Related Items:

X

Description:

Clear Body Option for Bromine Feeders

Model:

"-CLR"

Rev.	Description	Date
D	X	X
C	X	X
B	X	X

Notes:

1)

Notice

This drawing and its content are for the specific use of GTP customers only. It is not to be duplicated or copied without expressed written content of General Treatment Products, Inc. We Reserve the right to modify this drawing with out notice.