

**Specifications:**

Tank Capacity:  
Primary Tank: 18 Gallons  
Containment Tank: 30 Gallons  
Containment: 166%

**Materials of Construction:**

High Density Polyethylene

<b>Voltage:</b>	N/A
<b>Max. Temp.:</b>	85 °F
<b>Max. Press:</b>	0 PSI
<b>Weight:</b>	25 LBS

12	X	X
11	X	X
10	X	X
9	X	X
8	X	X
7	X	X
6	X	X
5	X	X
4	X	X
3	X	X
2	X	X
1	X	X

#	Part	Description
---	------	-------------



Phone: 714-257-9165  
Fax: 714-257-9215  
[www.gtpcompany.com](http://www.gtpcompany.com)

**Drwn By:** JC  
**Date:** 12/1/10  
**Scale:** NTS  
**Rev:** A

**Related Items:**  
X

<b>D</b>	X	X
<b>C</b>	X	X
<b>B</b>	X	X
<b>Rev.</b>	<b>Description</b>	<b>Date</b>

**Notes:**

1)

**Notice**

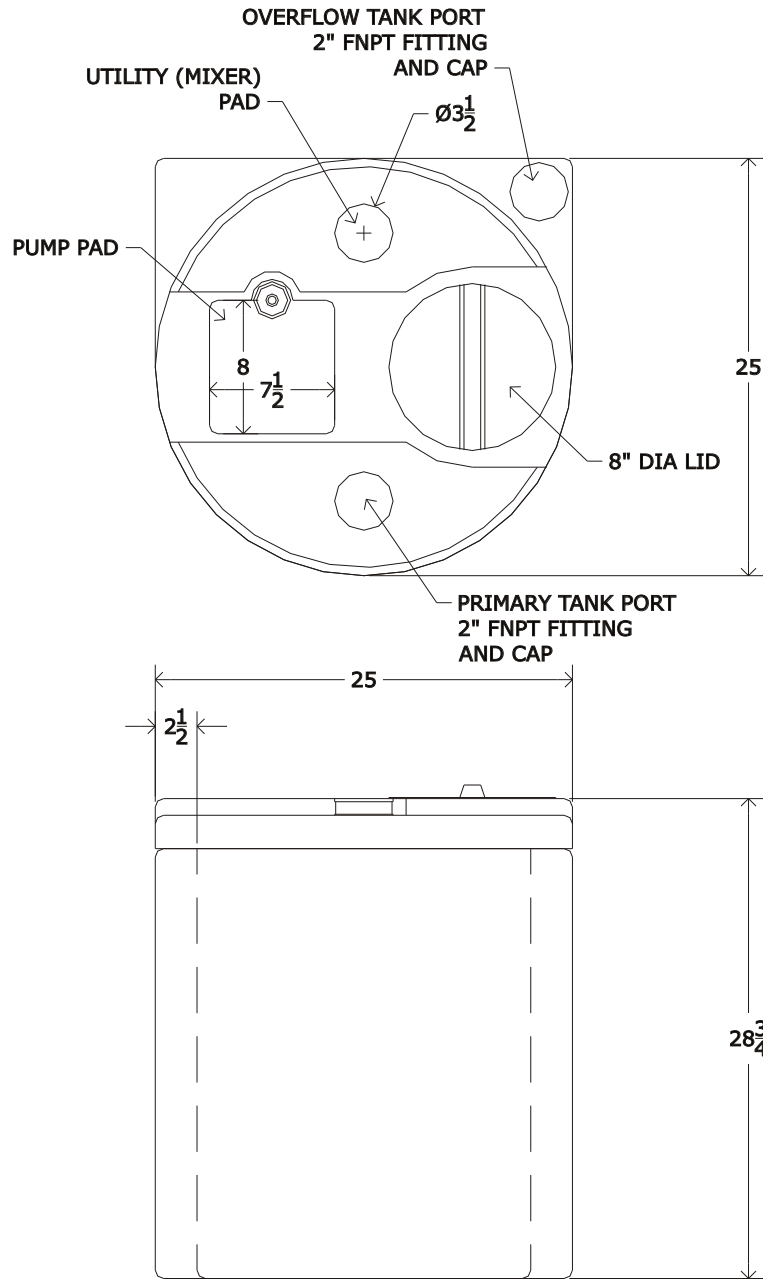
This drawing and its content are for the specific use of GTP customers only. It is not to be duplicated or copied without expressed written content of General Treatment Products, Inc. We Reserve the right to modify this drawing with out notice.

**Description:**

18 Gallon Double Wall "Chem-Tainment" Tank

**Model:**

DW 18



**Specifications:**

Tank Capacity:  
 Primary Tank: 35 Gallons  
 Containment Tank: 53 Gallons  
 Containment: 151%

**Materials of Construction:**

High Density Polyethylene

<b>Voltage:</b>	N/A
<b>Max. Temp.:</b>	85 °F
<b>Max. Press:</b>	0 PSI
<b>Weight:</b>	43 LBS

12	X	X
11	X	X
10	X	X
9	X	X
8	X	X
7	X	X
6	X	X
5	X	X
4	X	X
3	X	X
2	X	X
1	X	X

#	Part	Description
---	------	-------------



Phone: 714-257-9165  
 Fax: 714-257-9215  
[www.gtpcompany.com](http://www.gtpcompany.com)

<b>Drwn By:</b>	JC
<b>Date:</b>	12/1/10
<b>Scale:</b>	NTS
<b>Rev:</b>	A

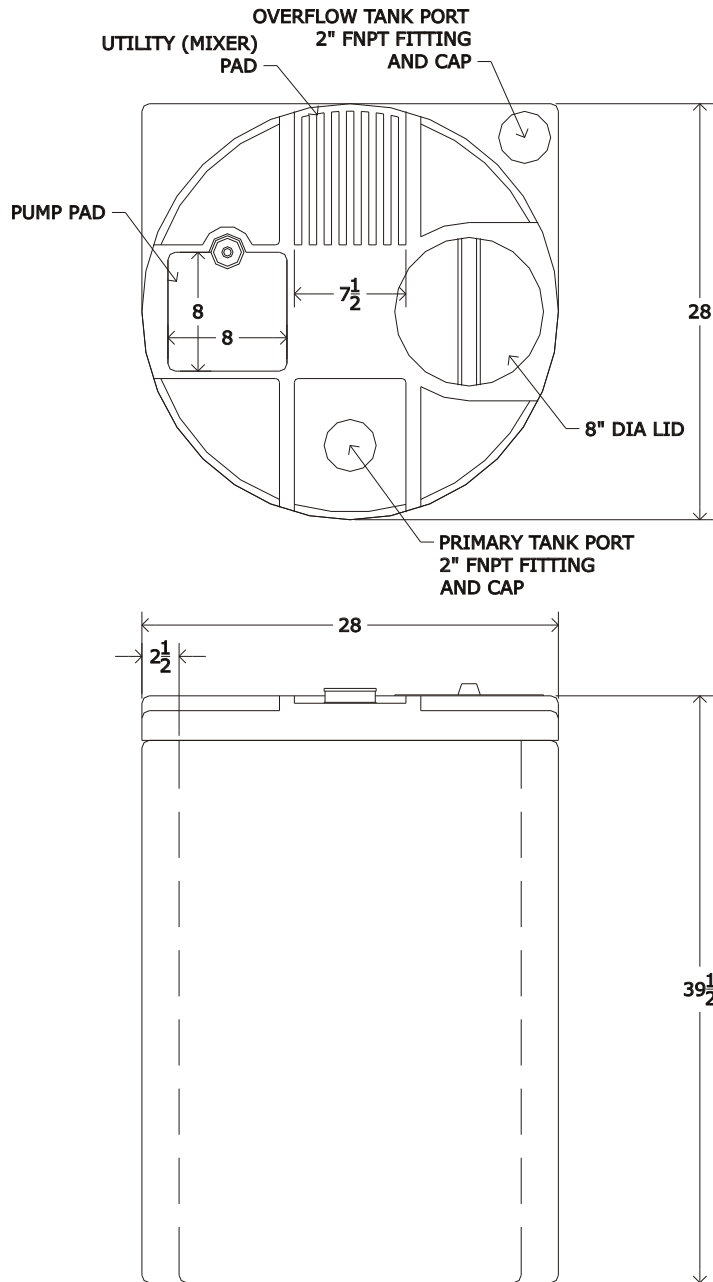
<b>Related Items:</b>	X
-----------------------	---

<b>D</b>	X	X
<b>C</b>	X	X
<b>B</b>	X	X
<b>Rev.</b>	<b>Description</b>	<b>Date</b>

**Notes:**  
 1)

**Notice**  
 This drawing and its content are for the specific use of GTP customers only. It is not to be duplicated or copied without expressed written content of General Treatment Products, Inc. We Reserve the right to modify this drawing with out notice.

**Description:**  
 35 Gallon Double Wall "Chem-Tainment" Tank  
**Model:**  
 DW 35



**Specifications:**

Tank Capacity:  
 Primary Tank: 65 Gallons  
 Containment Tank: 98 Gallons  
 Containment: 150%

**Materials of Construction:**

High Density Polyethylene

**Voltage:** N/A

**Max. Temp.:** 85 °F

**Max. Press:** 0 PSI

**Weight:** 57 LBS

12	X	X
11	X	X
10	X	X
9	X	X
8	X	X
7	X	X
6	X	X
5	X	X
4	X	X
3	X	X
2	X	X
1	X	X

#	Part	Description
---	------	-------------

Phone: 714-257-9165  
 Fax: 714-257-9215  
[www.gtpcompany.com](http://www.gtpcompany.com)

**Drwn By:** JC  
**Date:** 12/1/10  
**Scale:** NTS  
**Rev:** A

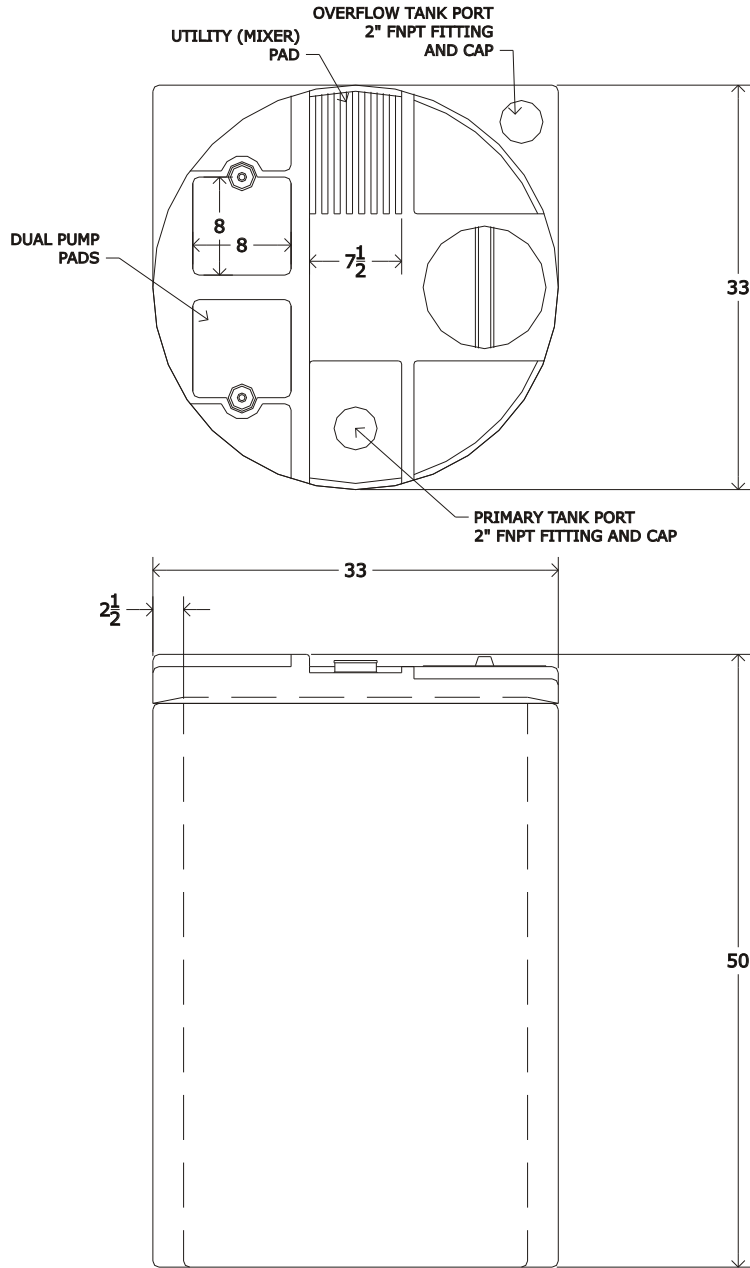
**Related Items:**  
 X

Rev.	Description	Date
D	X	X
C	X	X
B	X	X

**Notes:**  
 1)

**Notice**  
 This drawing and its content are for the specific use of GTP customers only. It is not to be duplicated or copied without expressed written content of General Treatment Products, Inc. We Reserve the right to modify this drawing with out notice.

**Description:**  
 65 Gallon Double Wall "Chem-Tainment" Tank  
**Model:**  
 DW 65



**Specifications:**

Tank Capacity:  
 Primary Tank: 120 Gallons  
 Containment Tank: 180 Gallons  
 Containment: 150%

**Materials of Construction:**

High Density Polyethylene

**Voltage:** N/A

**Max. Temp.:** 85 °F

**Max. Press:** 0 PSI

**Weight:** 104 LBS

12	X	X
11	X	X
10	X	X
9	X	X
8	X	X
7	X	X
6	X	X
5	X	X
4	X	X
3	X	X
2	X	X
1	X	X

#	Part	Description
---	------	-------------



Phone: 714-257-9165  
 Fax: 714-257-9215  
[www.gtpcompany.com](http://www.gtpcompany.com)

**Drwn By:** JC  
**Date:** 12/1/10  
**Scale:** NTS  
**Rev:** A

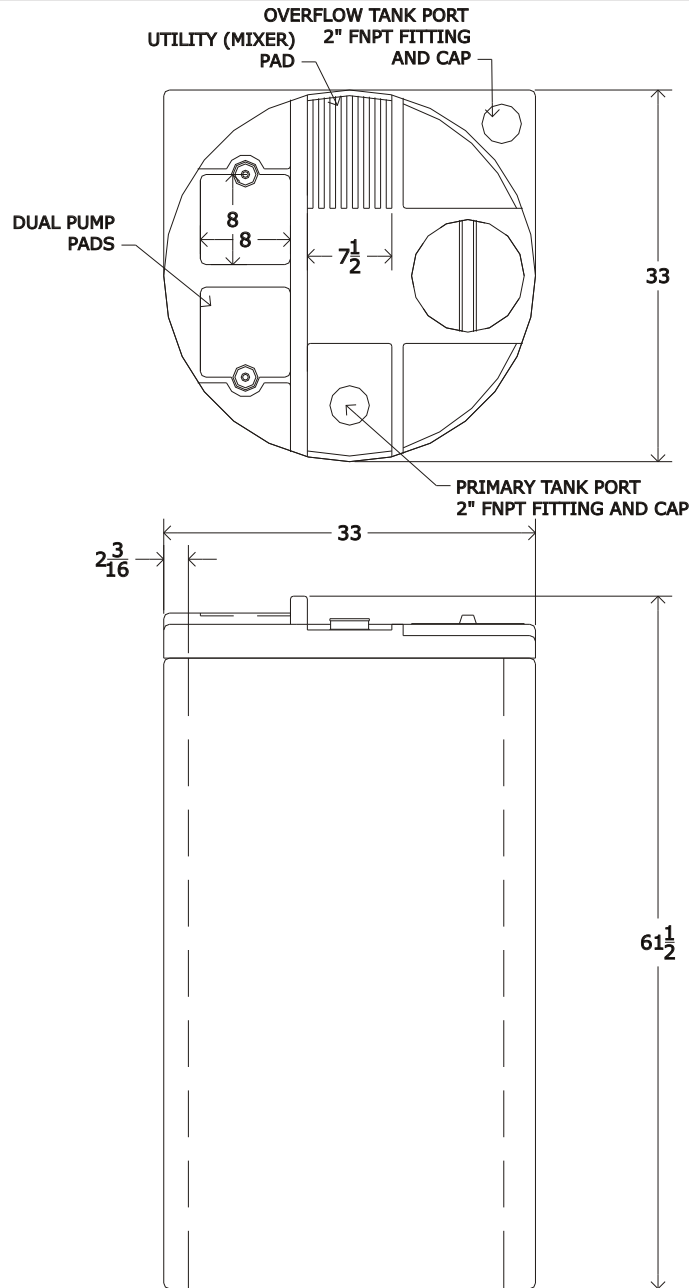
**Related Items:**  
 X

D	X	X
C	X	X
B	X	X
Rev.	Description	Date

**Notes:**  
 1)

**Notice**  
 This drawing and its content are for the specific use of GTP customers only. It is not to be duplicated or copied without expressed written content of General Treatment Products, Inc. We Reserve the right to modify this drawing with out notice.

**Description:**  
 120 Gallon Double Wall "Chem-Tainment" Tank  
**Model:**  
 DW 120



**Specifications:**  
 Tank Capacity:  
 Primary Tank: 160 Gallons  
 Containment Tank: 240 Gallons  
 Containment: 150%

**Materials of Construction:**  
 High Density Polyethylene

**Voltage:** N/A  
**Max. Temp.:** 85 °F  
**Max. Press:** 0 PSI  
**Weight:** 139 LBS

12	X	X
11	X	X
10	X	X
9	X	X
8	X	X
7	X	X
6	X	X
5	X	X
4	X	X
3	X	X
2	X	X
1	X	X

#	Part	Description
---	------	-------------

 **General Treatment Products, Inc.**  
 Phone: 714-257-9165  
 Fax: 714-257-9215  
[www.gtpcompany.com](http://www.gtpcompany.com)

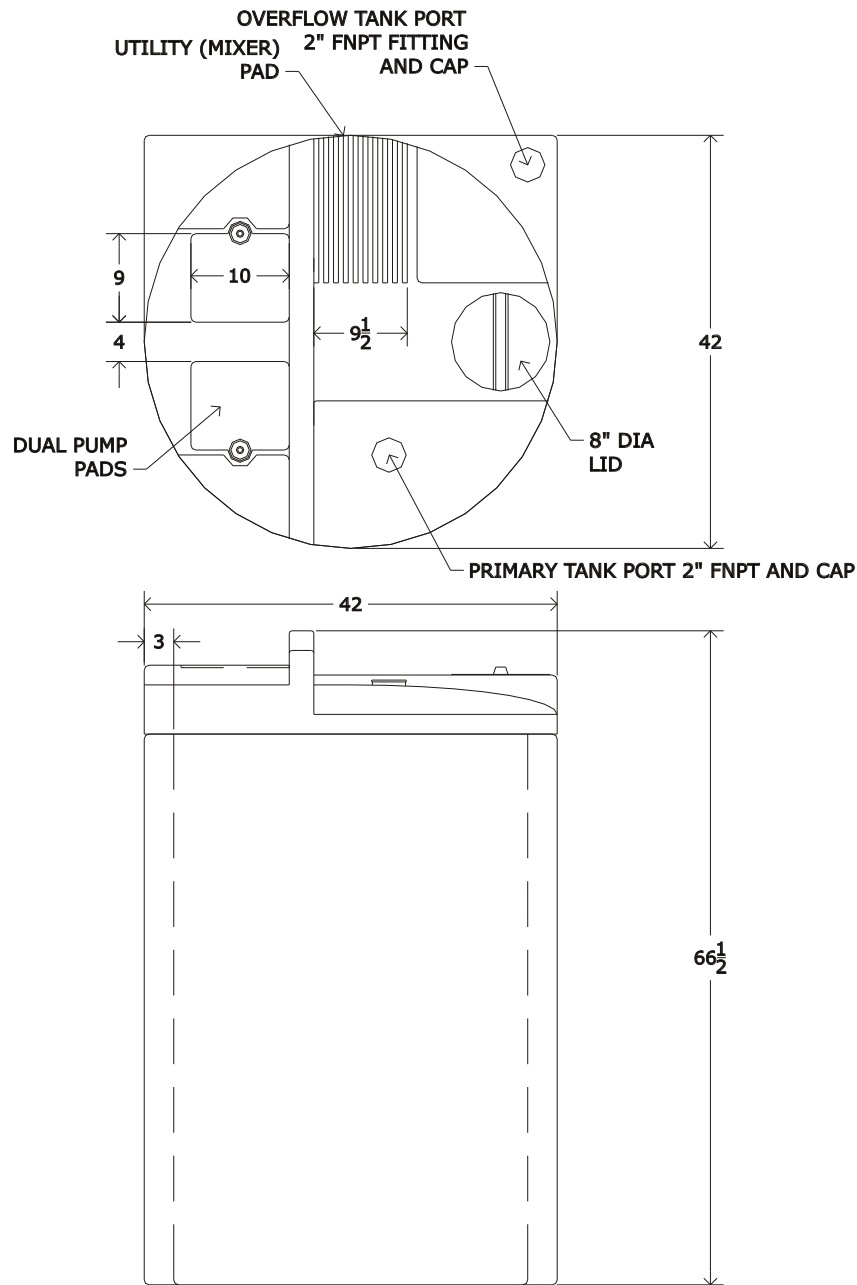
<b>Drwn By:</b> JC	<b>Related Items:</b> X
<b>Date:</b> 12/1/10	
<b>Scale:</b> NTS	
<b>Rev:</b> A	

<b>D</b>	X	X
<b>C</b>	X	X
<b>B</b>	X	X
<b>Rev.</b>	<b>Description</b>	<b>Date</b>

**Notes:**  
 1)

**Notice**  
 This drawing and its content are for the specific use of GTP customers only. It is not to be duplicated or copied without expressed written content of General Treatment Products, Inc. We Reserve the right to modify this drawing with out notice.

**Description:**  
 160 Gallon Double Wall "Chem-Tainment" Tank  
**Model:**  
 DW 160



**Specifications:**  
 Tank Capacity:  
 Primary Tank: 220 Gallons  
 Containment Tank: 330 Gallons  
 Containment: 150%

**Materials of Construction:**  
 High Density Polyethylene

**Voltage:** N/A  
**Max. Temp.:** 85 °F  
**Max. Press:** 0 PSI  
**Weight:** 165 LBS

12	X	X
11	X	X
10	X	X
9	X	X
8	X	X
7	X	X
6	X	X
5	X	X
4	X	X
3	X	X
2	X	X
1	X	X

#	Part	Description
---	------	-------------



Phone: 714-257-9165  
 Fax: 714-257-9215  
[www.gtpcompany.com](http://www.gtpcompany.com)

**Drwn By:** JC  
**Date:** 12/1/10  
**Scale:** NTS  
**Rev:** A

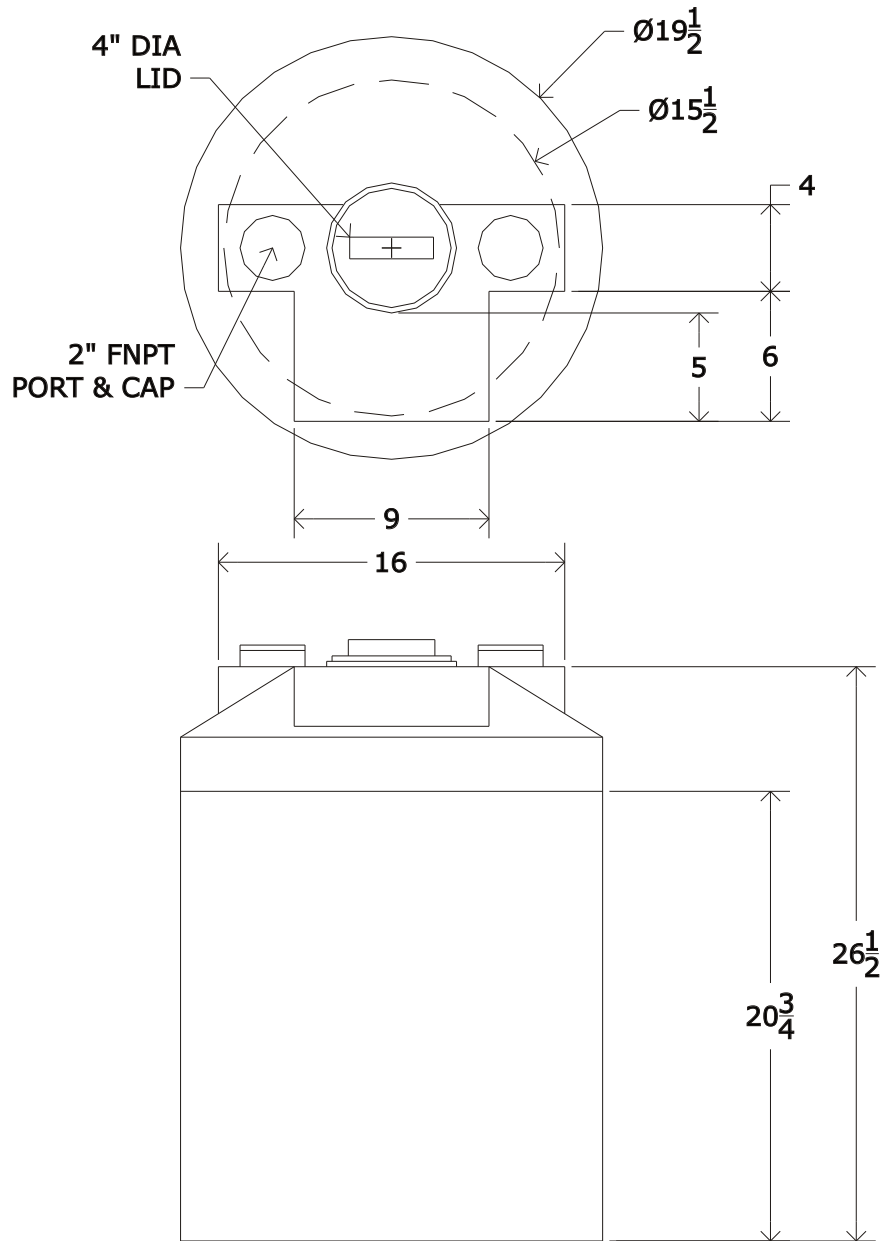
**Related Items:**  
 X

Rev.	Description	Date
D	X	X
C	X	X
B	X	X

**Notes:**  
 1)

**Notice**  
 This drawing and its content are for the specific use of GTP customers only. It is not to be duplicated or copied without expressed written content of General Treatment Products, Inc. We Reserve the right to modify this drawing with out notice.

**Description:**  
 220 Gallon Double Wall "Chem-Tainment" Tank  
**Model:**  
 DW 220



**Specifications:**

Tank Capacity:  
 Primary Tank: 15 Gallons  
 Containment Tank: 26 Gallons  
 Containment: 173%

**Materials of Construction:**

High Density Polyethylene

**Voltage:** N/A

**Max. Temp.:** 85 °F

**Max. Press:** 0 PSI

**Weight:** 25 LBS

12	X	X
11	X	X
10	X	X
9	X	X
8	X	X
7	X	X
6	X	X
5	X	X
4	X	X
3	X	X
2	X	X
1	X	X

#	Part	Description
---	------	-------------



Phone: 714-257-9165  
 Fax: 714-257-9215  
[www.gtpcompany.com](http://www.gtpcompany.com)

**Drwn By:** JC  
**Date:** 12/1/10  
**Scale:** NTS  
**Rev:** A

**Related Items:**  
 X

Rev.	Description	Date
D	X	X
C	X	X
B	X	X

**Notes:**

1)

**Notice**

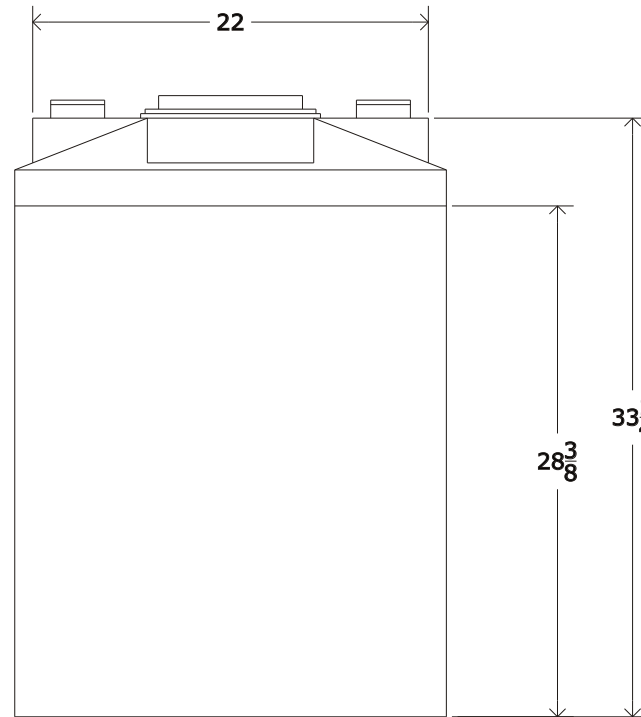
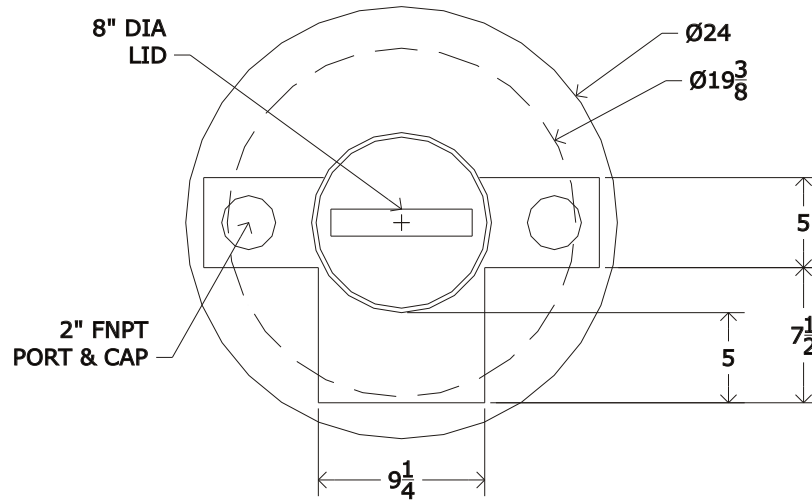
This drawing and its content are for the specific use of GTP customers only. It is not to be duplicated or copied without expressed written content of General Treatment Products, Inc. We Reserve the right to modify this drawing with out notice.

**Description:**

15 Gallon Economy Double Wall Tank

**Model:**

DWE 15



**Specifications:**

Tank Capacity:  
 Primary Tank: 35 Gallons  
 Containment Tank: 54 Gallons  
 Containment: 154%

**Materials of Construction:**

High Density Polyethylene

**Voltage:** N/A

**Max. Temp.:** 85 °F

**Max. Press:** 0 PSI

**Weight:** 36 LBS

12	X	X
11	X	X
10	X	X
9	X	X
8	X	X
7	X	X
6	X	X
5	X	X
4	X	X
3	X	X
2	X	X
1	X	X

#	Part	Description
---	------	-------------



Phone: 714-257-9165  
 Fax: 714-257-9215  
[www.gtpcompany.com](http://www.gtpcompany.com)

**Drwn By:** JC  
**Date:** 12/1/10  
**Scale:** NTS  
**Rev:** A

**Related Items:**  
 X

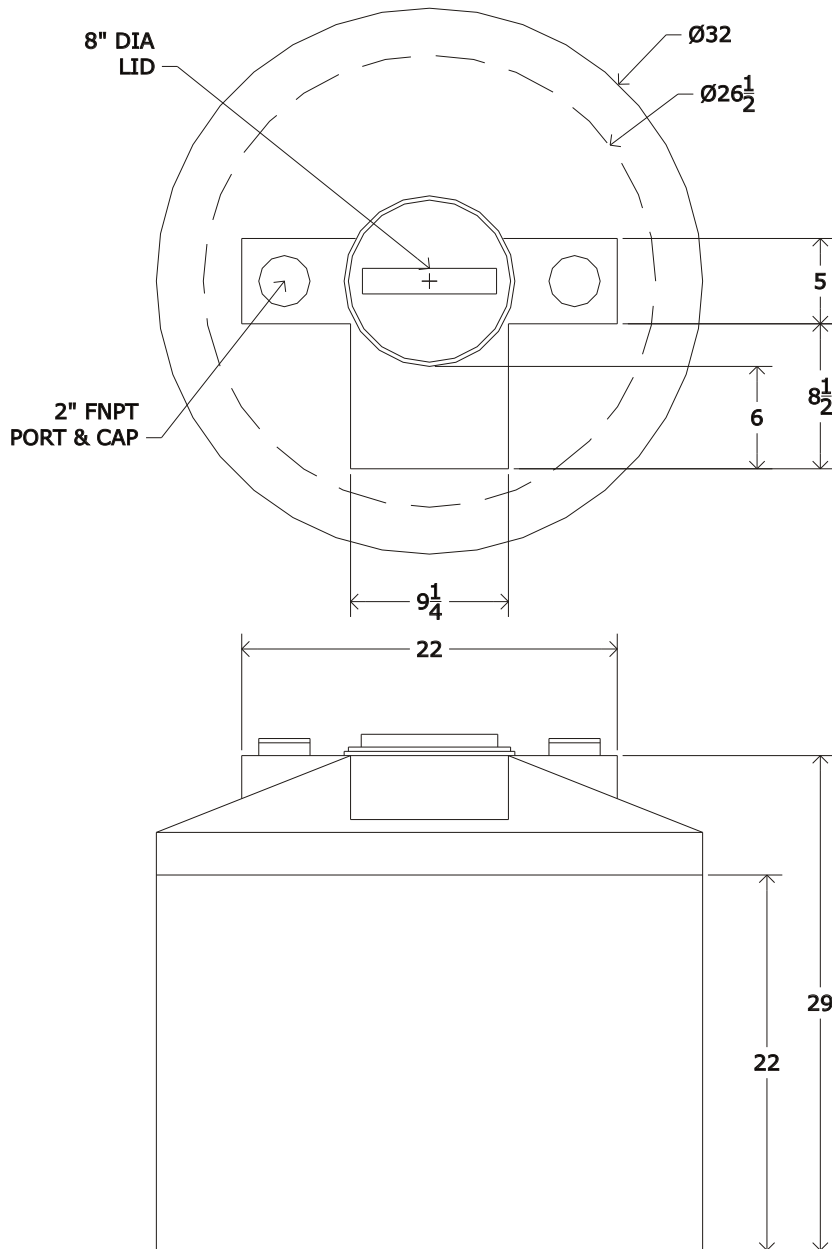
Rev.	Description	Date
D	X	X
C	X	X
B	X	X

**Notes:**  
 1)

**Notice**  
 This drawing and its content are for the specific use of GTP customers only. It is not to be duplicated or copied without expressed written content of General Treatment Products, Inc. We Reserve the right to modify this drawing with out notice.

**Description:**  
 35 Gallon Economy Double Wall Tank

**Model:**  
 DWE 35



**Specifications:**

Tank Capacity:  
 Primary Tank: 60 Gallons  
 Containment Tank: 76 Gallons  
 Containment: 125%

**Materials of Construction:**

High Density Polyethylene

<b>Voltage:</b>	N/A
<b>Max. Temp.:</b>	85 °F
<b>Max. Press:</b>	0 PSI
<b>Weight:</b>	46 LBS

12	X	X
11	X	X
10	X	X
9	X	X
8	X	X
7	X	X
6	X	X
5	X	X
4	X	X
3	X	X
2	X	X
1	X	X

#	Part	Description
---	------	-------------



Phone: 714-257-9165  
 Fax: 714-257-9215  
[www.gtpcompany.com](http://www.gtpcompany.com)

<b>Drwn By:</b>	JC
<b>Date:</b>	12/1/10
<b>Scale:</b>	NTS
<b>Rev:</b>	A

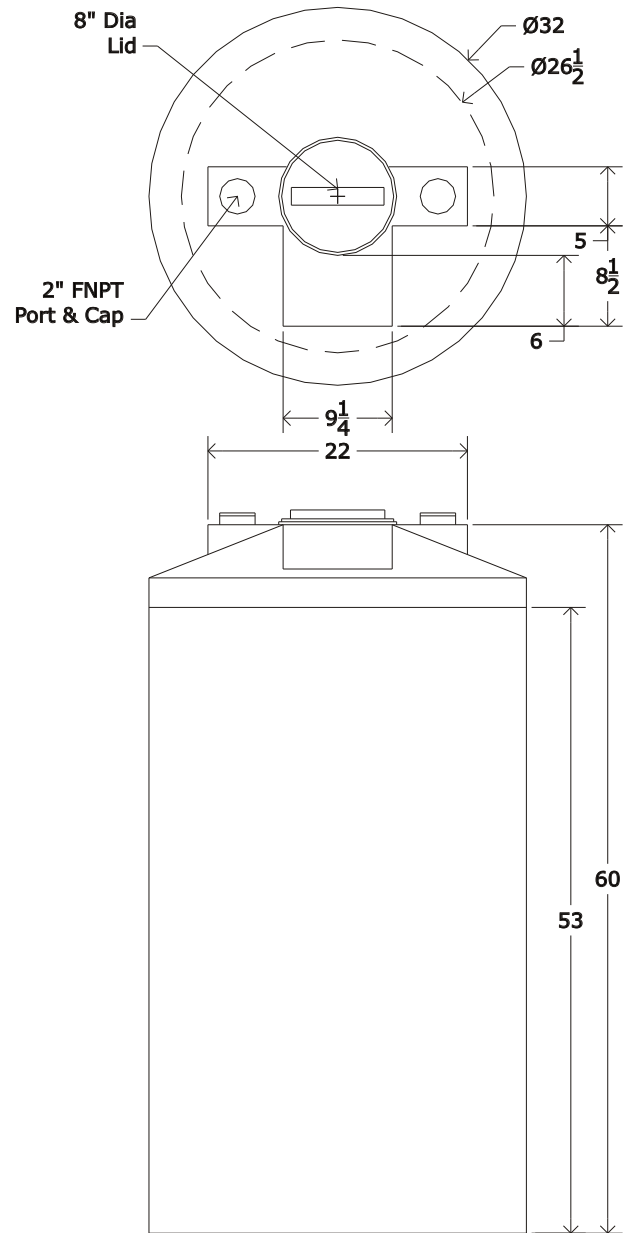
<b>Related Items:</b>	X
-----------------------	---

<b>D</b>	X	X
<b>C</b>	X	X
<b>B</b>	X	X
<b>Rev.</b>	<b>Description</b>	<b>Date</b>

**Notes:**  
 1)

**Notice**  
 This drawing and its content are for the specific use of GTP customers only. It is not to be duplicated or copied without expressed written content of General Treatment Products, Inc. We Reserve the right to modify this drawing with out notice.

**Description:**  
 60 Gallon Economy Double Wall Tank  
**Model:**  
 DWE 60



**Specifications:**

Tank Capacity:  
 Primary Tank: 110 Gallons  
 Containment Tank: Gallons  
 Containment: 125%

**Materials of Construction:**

High Density Polyethylene

**Voltage:** N/A

**Max. Temp.:** 85 °F

**Max. Press:** 0 PSI

**Weight:** 76 LBS

12	X	X
11	X	X
10	X	X
9	X	X
8	X	X
7	X	X
6	X	X
5	X	X
4	X	X
3	X	X
2	X	X
1	X	X

#	Part	Description
---	------	-------------



Phone: 714-257-9165  
 Fax: 714-257-9215  
[www.gtpcompany.com](http://www.gtpcompany.com)

**Drwn By:** JC  
**Date:** 12/1/10  
**Scale:** NTS  
**Rev:** A

**Related Items:**  
 X

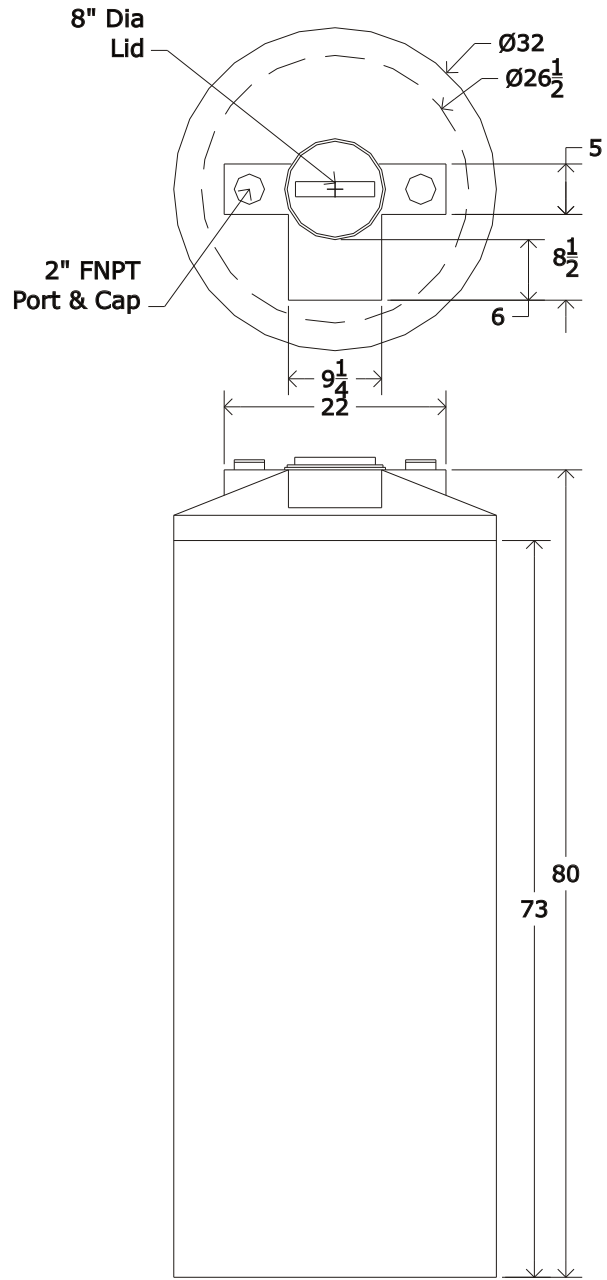
Rev.	Description	Date
D	X	X
C	X	X
B	X	X

**Notes:**  
 1)

**Notice**  
 This drawing and its content are for the specific use of GTP customers only. It is not to be duplicated or copied without expressed written content of General Treatment Products, Inc. We Reserve the right to modify this drawing with out notice.

**Description:**  
 110 Gallon Economy Double Wall Tank

**Model:**  
 DWE 110



**Specifications:**

Tank Capacity:  
 Primary Tank: 165 Gallons  
 Containment Tank: Gallons  
 Containment: 125%

**Materials of Construction:**

High Density Polyethylene

<b>Voltage:</b>	N/A
<b>Max. Temp.:</b>	85 °F
<b>Max. Press:</b>	0 PSI
<b>Weight:</b>	115 LBS

12	X	X
11	X	X
10	X	X
9	X	X
8	X	X
7	X	X
6	X	X
5	X	X
4	X	X
3	X	X
2	X	X
1	X	X

#	Part	Description
---	------	-------------



Phone: 714-257-9165  
 Fax: 714-257-9215  
[www.gtpcompany.com](http://www.gtpcompany.com)

<b>Drwn By:</b> JC	<b>Related Items:</b> X
<b>Date:</b> 12/1/10	
<b>Scale:</b> NTS	
<b>Rev:</b> A	

Rev.	Description	Date
D	X	X
C	X	X
B	X	X

**Notes:**  
 1)

**Notice**  
 This drawing and its content are for the specific use of GTP customers only. It is not to be duplicated or copied without expressed written content of General Treatment Products, Inc. We Reserve the right to modify this drawing with out notice.

**Description:**  
 165 Gallon Economy Double Wall Tank

**Model:**  
 DWE 165