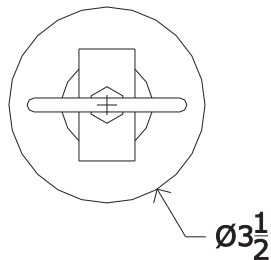
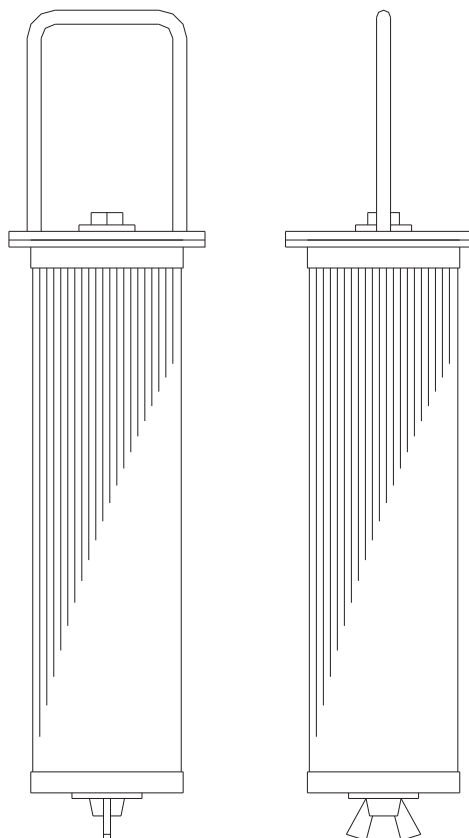
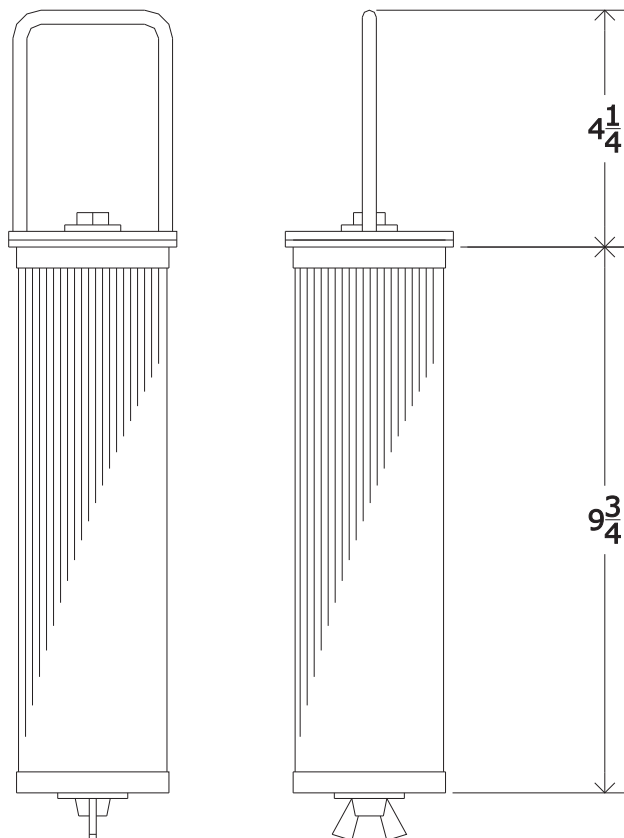


PF20



PF20/QC



Specifications:

Pleated filter hanger assembly design to remove particles in closed loop system. Filters to be cleaned and reused as part of chemistry scheduled maintenance.

Materials of Construction:

Polypropylene, Buna-N, Stainless Steel and Carbon Steel

Voltage: N/A

Max. Temp.: 180 °F

Max. Press: N/A

Weight: 3 LBS

12	X	X
11	X	X
10	X	X
9	X	X
8	X	X
7	X	X
6	X	X
5	X	X
4	X	X
3	X	X
2	X	X
1	X	X

#	Part	Description
---	------	-------------



Phone: 714-257-9165
 Fax: 714-257-9215
www.gtpcompany.com

Drwn By: JC	Related Items: X
Date: 12/1/10	
Scale: NTS	
Rev: A	

D	X	X
C	X	X
B	X	X
Rev.	Description	Date

Notes:
 1)

Notice
 This drawing and its content are for the specific use of GTP customers only. It is not to be duplicated or copied without expressed written content of General Treatment Products, Inc. We Reserve the right to modify this drawing with out notice.

Description:
 Pleated Filter Hanger Assembly

Model:
 PF