

**Specifications:**

Inlet: 3/8" MNPT  
 Outlet: 3/8" MNPT  
 Drain: 3/4" MNPT  
 Flowrate: 4-9 GPM

**Materials of Construction:**

Carbon Steel

**Voltage:** N/A

**Max. Temp.:** 200 °F

**Max. Press:** 150 PSI

**Weight:** 12 LBS

12	X	X
11	X	X
10	X	X
9	X	X
8	X	X
7	X	X
6	X	X
5	X	X
4	X	X
3	X	X
2	X	X
1	X	X

#	Part	Description
---	------	-------------



Phone: 714-257-9165  
 Fax: 714-257-9215  
[www.gtpcompany.com](http://www.gtpcompany.com)

**Drwn By:** JC  
**Date:** 12/1/10  
**Scale:** NTS  
**Rev:** A

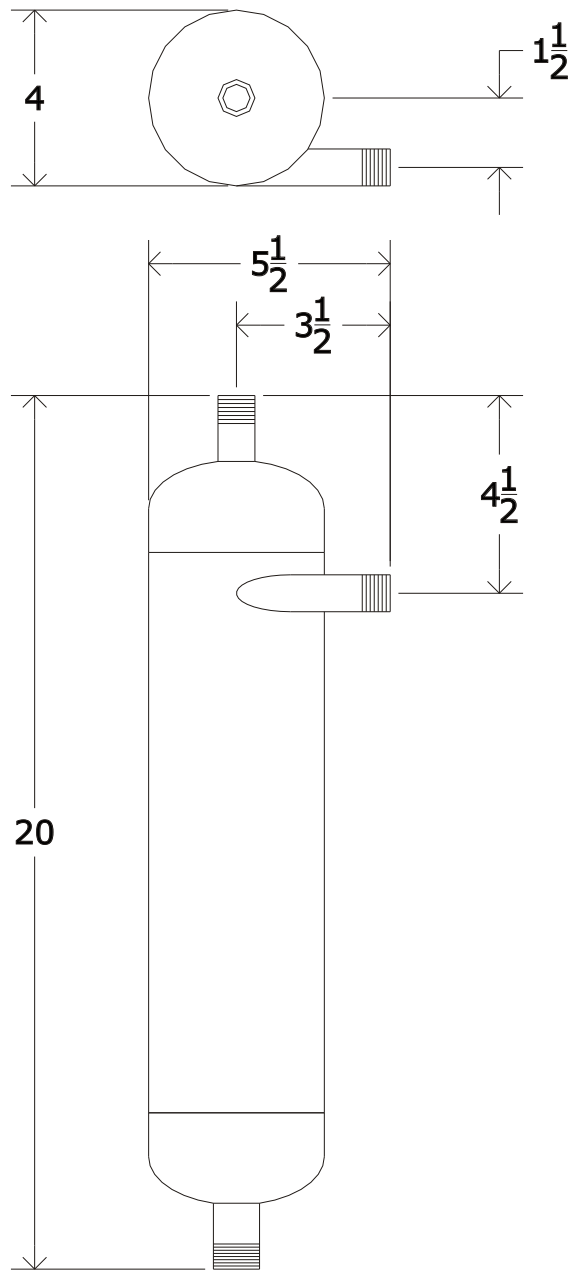
**Related Items:**  
 X

Rev.	Description	Date
D	X	X
C	X	X
B	X	X

**Notes:**  
 1)

**Notice**  
 This drawing and its content are for the specific use of GTP customers only. It is not to be duplicated or copied without expressed written content of General Treatment Products, Inc. We Reserve the right to modify this drawing with out notice.

**Description:**  
 3/8" Centrifugal Separator  
**Model:**  
 STX-0038



**Specifications:**

Inlet: 1/2" MNPT  
 Outlet: 1/2" MNPT  
 Drain: 3/4" MNPT  
 Flowrate: 6-12 GPM

**Materials of Construction:**

Carbon Steel

**Voltage:** N/A

**Max. Temp.:** 200 °F

**Max. Press:** 150 PSI

**Weight:** 14 LBS

12	X	X
11	X	X
10	X	X
9	X	X
8	X	X
7	X	X
6	X	X
5	X	X
4	X	X
3	X	X
2	X	X
1	X	X

#	Part	Description
---	------	-------------



General Treatment Products, Inc.

Phone: 714-257-9165  
 Fax: 714-257-9215  
[www.gtpcompany.com](http://www.gtpcompany.com)

<b>Drwn By:</b> JC	<b>Related Items:</b> X
<b>Date:</b> 12/1/10	
<b>Scale:</b> NTS	
<b>Rev:</b> A	

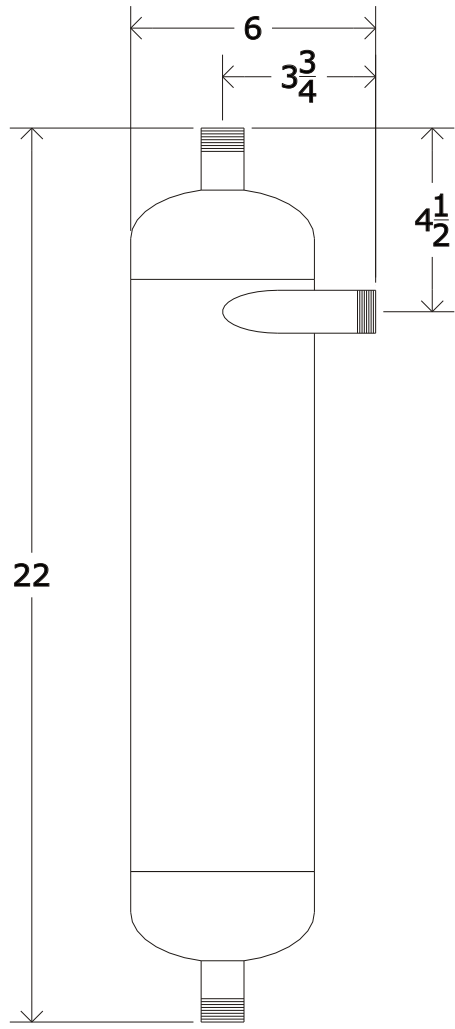
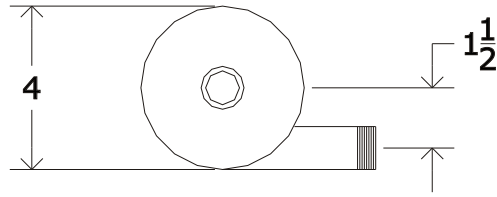
Rev.	Description	Date
D	X	X
C	X	X
B	X	X

**Notes:**  
 1)

**Notice**  
 This drawing and its content are for the specific use of GTP customers only. It is not to be duplicated or copied without expressed written content of General Treatment Products, Inc. We Reserve the right to modify this drawing with out notice.

**Description:**  
 1/2" Centrifugal Separator

**Model:**  
 STX-0050



**Specifications:**  
 Inlet: 3/4" MNPT  
 Outlet: 3/4" MNPT  
 Drain: 3/4" MNPT  
 Flowrate: 12-23 GPM

**Materials of Construction:**  
 Carbon Steel

**Voltage:** N/A  
**Max. Temp.:** 200 °F  
**Max. Press:** 150 PSI  
**Weight:** 18 LBS

12	X	X
11	X	X
10	X	X
9	X	X
8	X	X
7	X	X
6	X	X
5	X	X
4	X	X
3	X	X
2	X	X
1	X	X

#	Part	Description
---	------	-------------



Phone: 714-257-9165  
 Fax: 714-257-9215  
[www.gtpcompany.com](http://www.gtpcompany.com)

**Drwn By:** JC  
**Date:** 12/1/10  
**Scale:** NTS  
**Rev:** A

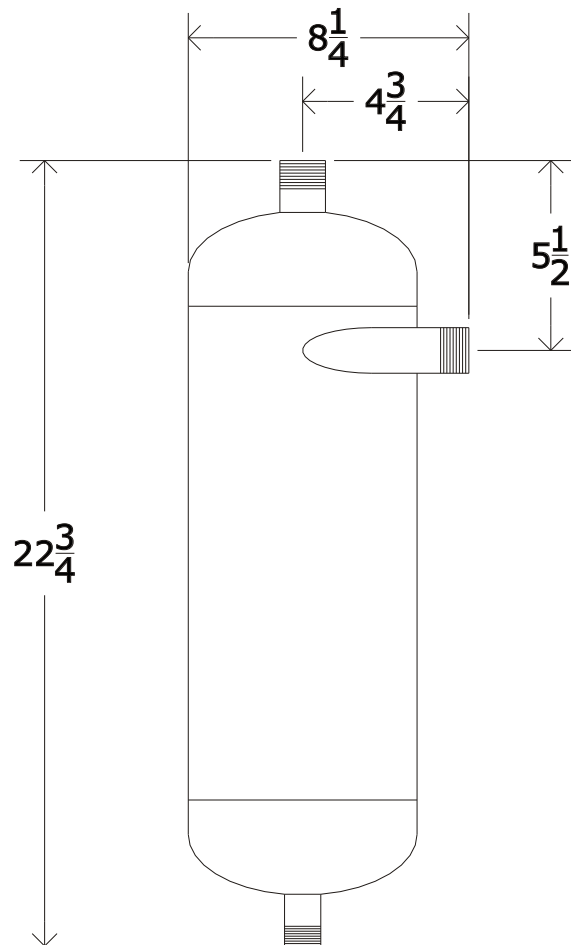
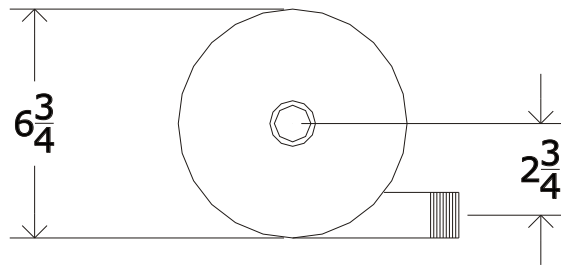
**Related Items:**  
 X

Rev.	Description	Date
D	X	X
C	X	X
B	X	X

**Notes:**  
 1)

**Notice**  
 This drawing and its content are for the specific use of GTP customers only. It is not to be duplicated or copied without expressed written content of General Treatment Products, Inc. We Reserve the right to modify this drawing with out notice.

**Description:**  
 3/4" Centrifugal Separator  
**Model:**  
 STX-0075



**Specifications:**

Inlet: 1" MNPT  
 Outlet: 1" MNPT  
 Drain: 3/4" MNPT  
 Flowrate: 22-38 GPM

**Materials of Construction:**

Carbon Steel

**Voltage:** N/A

**Max. Temp.:** 200 °F

**Max. Press:** 150 PSI

**Weight:** 20 LBS

12	X	X
11	X	X
10	X	X
9	X	X
8	X	X
7	X	X
6	X	X
5	X	X
4	X	X
3	X	X
2	X	X
1	X	X

#	Part	Description
---	------	-------------



Phone: 714-257-9165  
 Fax: 714-257-9215  
[www.gtpcompany.com](http://www.gtpcompany.com)

**Drwn By:** JC  
**Date:** 12/1/10  
**Scale:** NTS  
**Rev:** A

**Related Items:**

X

Rev.	Description	Date
D	X	X
C	X	X
B	X	X

**Notes:**

1)

**Notice**

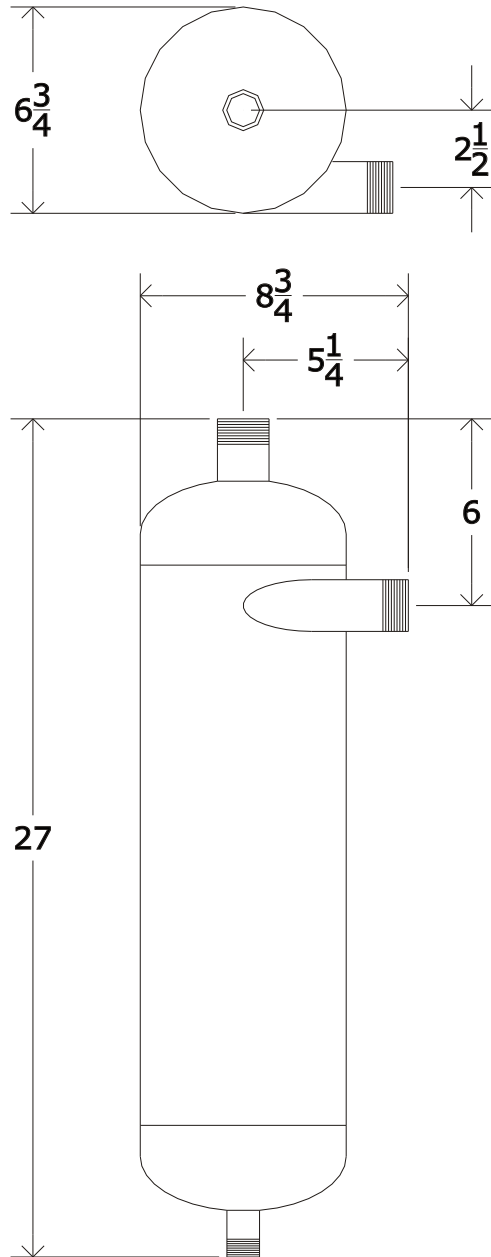
This drawing and its content are for the specific use of GTP customers only. It is not to be duplicated or copied without expressed written content of General Treatment Products, Inc. We Reserve the right to modify this drawing with out notice.

**Description:**

1" Centrifugal Separator

**Model:**

STX-0100



**Specifications:**

Inlet: 1 1/4" **MNPT**  
 Outlet: 1 1/4" **MNPT**  
 Drain: 3/4" **MNPT**  
 Flowrate: 34-54 **GPM**

**Materials of Construction:**

Carbon Steel

**Voltage:** N/A  
**Max. Temp.:** 200 °F  
**Max. Press:** 150 PSI  
**Weight:** 24 LBS

12	X	X
11	X	X
10	X	X
9	X	X
8	X	X
7	X	X
6	X	X
5	X	X
4	X	X
3	X	X
2	X	X
1	X	X

#	Part	Description
---	------	-------------



Phone: 714-257-9165  
 Fax: 714-257-9215  
[www.gtpcompany.com](http://www.gtpcompany.com)

**Drwn By:** JC  
**Date:** 12/1/10  
**Scale:** NTS  
**Rev:** A

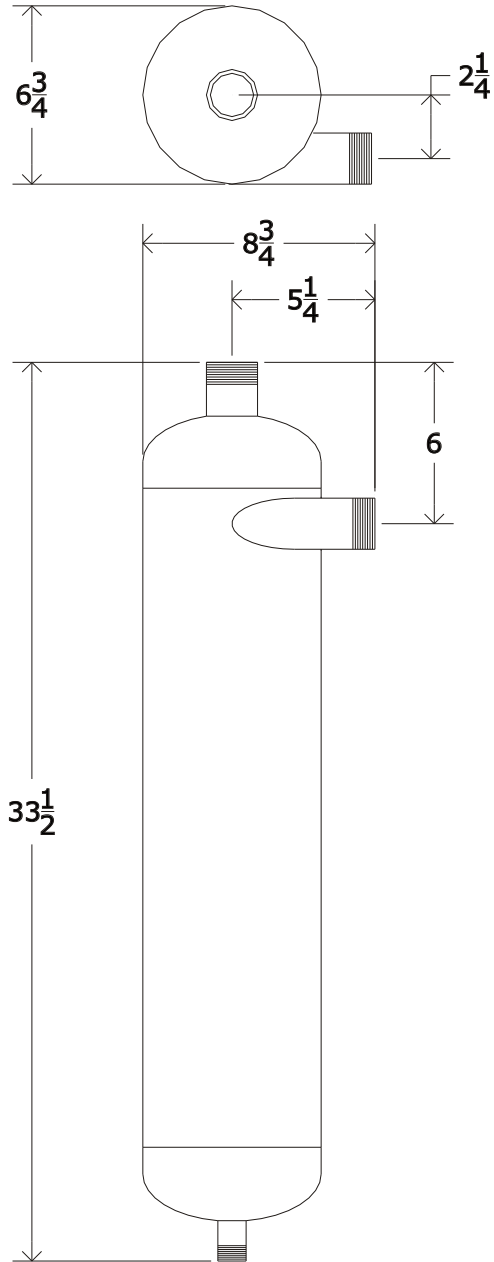
**Related Items:**  
 X

Rev.	Description	Date
D	X	X
C	X	X
B	X	X

**Notes:**  
 1)

**Notice**  
 This drawing and its content are for the specific use of GTP customers only. It is not to be duplicated or copied without expressed written content of General Treatment Products, Inc. We Reserve the right to modify this drawing with out notice.

**Description:**  
 1 1/4" Centrifugal Separator  
**Model:**  
 STX-0125



**Specifications:**

Inlet: 1 1/2" MNPT  
 Outlet: 1 1/2" MNPT  
 Drain: 3/4" MNPT  
 Flowrate: 52-86 GPM

**Materials of Construction:**

Carbon Steel

**Voltage:** N/A  
**Max. Temp.:** 200 °F  
**Max. Press:** 150 PSI  
**Weight:** 24 LBS

12	X	X
11	X	X
10	X	X
9	X	X
8	X	X
7	X	X
6	X	X
5	X	X
4	X	X
3	X	X
2	X	X
1	X	X

#	Part	Description
---	------	-------------



Phone: 714-257-9165  
 Fax: 714-257-9215  
[www.gtpcompany.com](http://www.gtpcompany.com)

**Drwn By:** JC  
**Date:** 12/1/10  
**Scale:** NTS  
**Rev:** A

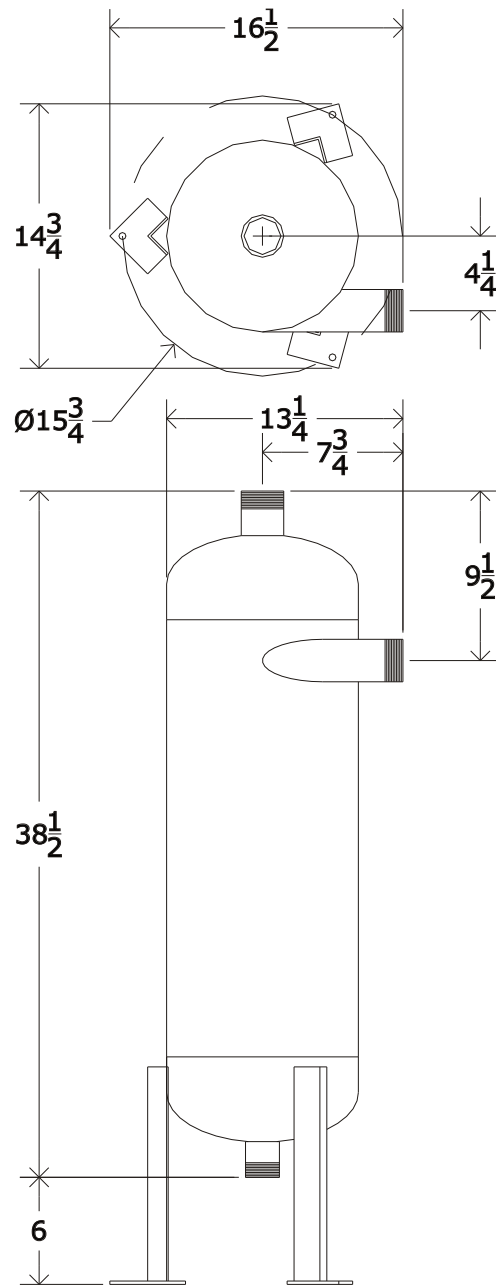
**Related Items:**  
 X

Rev.	Description	Date
D	X	X
C	X	X
B	X	X

**Notes:**  
 1)

**Notice**  
 This drawing and its content are for the specific use of GTP customers only. It is not to be duplicated or copied without expressed written content of General Treatment Products, Inc. We Reserve the right to modify this drawing with out notice.

**Description:**  
 1 1/2" Centrifugal Separator  
**Model:**  
 STX-0150



**Specifications:**  
 Inlet: 2" MNPT  
 Outlet: 2" MNPT  
 Drain: 1 1/2" MNPT  
 Flowrate: 76-118 GPM

**Materials of Construction:**  
 Carbon Steel

**Voltage:** N/A  
**Max. Temp.:** 200 °F  
**Max. Press:** 150 PSI  
**Weight:** 35 LBS

12	X	X
11	X	X
10	X	X
9	X	X
8	X	X
7	X	X
6	X	X
5	X	X
4	X	X
3	X	X
2	X	X
1	X	X

#	Part	Description
---	------	-------------



Phone: 714-257-9165  
 Fax: 714-257-9215  
[www.gtpcompany.com](http://www.gtpcompany.com)

**Drwn By:** JC  
**Date:** 12/1/10  
**Scale:** NTS  
**Rev:** A

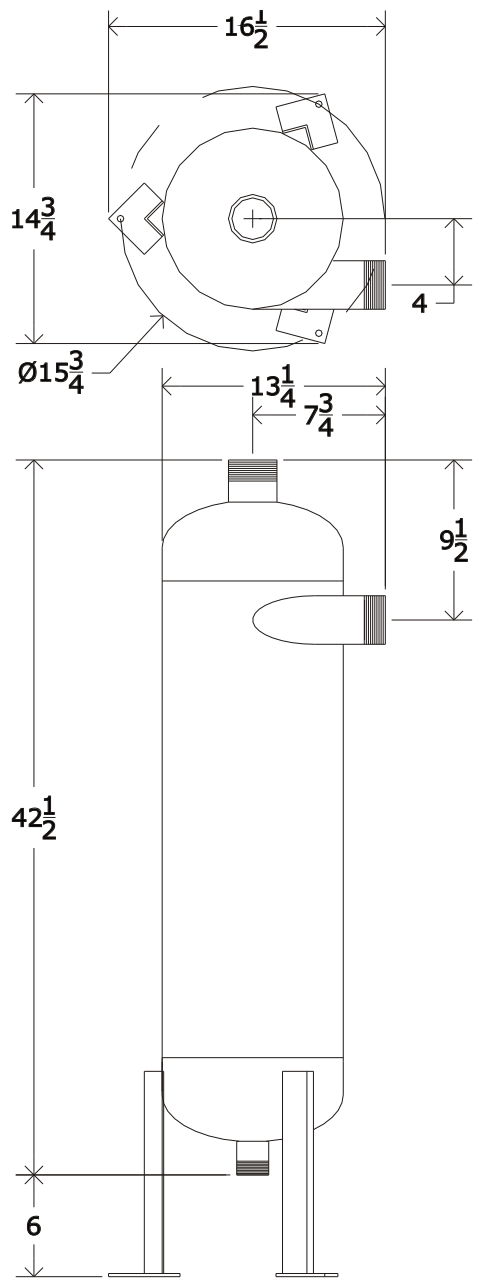
**Related Items:**  
 X

Rev.	Description	Date
D	X	X
C	X	X
B	X	X

**Notes:**  
 1)

**Notice**  
 This drawing and its content are for the specific use of GTP customers only. It is not to be duplicated or copied without expressed written content of General Treatment Products, Inc. We Reserve the right to modify this drawing with out notice.

**Description:**  
 2" Centrifugal Separator  
**Model:**  
 STX-0200



**Specifications:**  
 Inlet: 2 1/2" MNPT  
 Outlet: 2 1/2" MNPT  
 Drain: 3/4" MNPT  
 Flowrate: 118-186 GPM

**Materials of Construction:**  
 Carbon Steel

**Voltage:** N/A  
**Max. Temp.:** 200 °F  
**Max. Press:** 150 PSI  
**Weight:** 38 LBS

12	X	X
11	X	X
10	X	X
9	X	X
8	X	X
7	X	X
6	X	X
5	X	X
4	X	X
3	X	X
2	X	X
1	X	X
#	Part	Description



Phone: 714-257-9165  
 Fax: 714-257-9215  
[www.gtpcompany.com](http://www.gtpcompany.com)

**Drwn By:** JC  
**Date:** 12/1/10  
**Scale:** NTS  
**Rev:** A

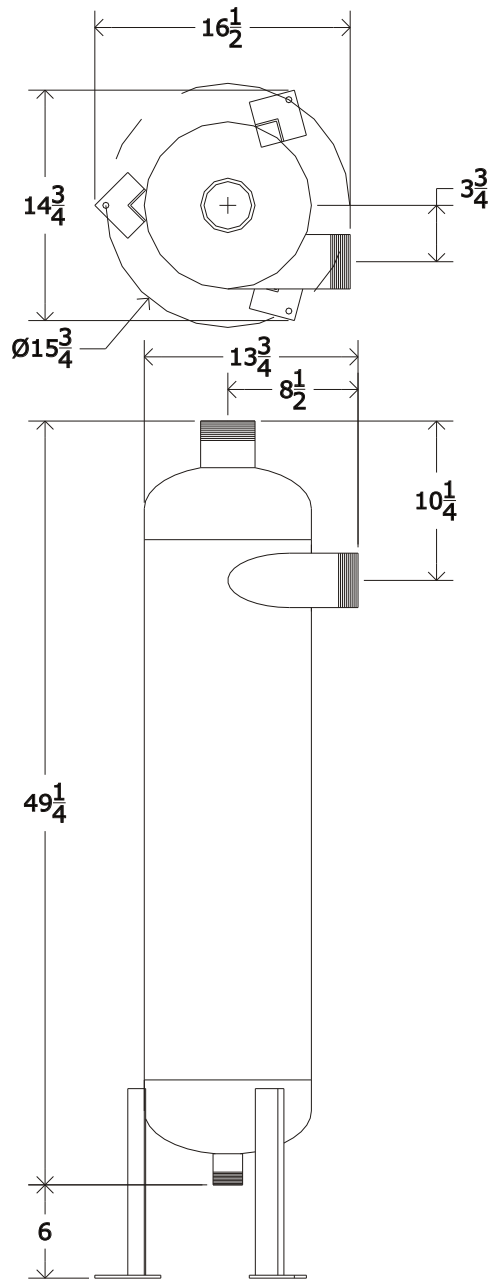
**Related Items:**  
 X

D	X	X
C	X	X
B	X	X
Rev.	Description	Date

**Notes:**  
 1)

**Notice**  
 This drawing and its content are for the specific use of GTP customers only. It is not to be duplicated or copied without expressed written content of General Treatment Products, Inc. We Reserve the right to modify this drawing with out notice.

**Description:**  
 2 1/2" Centrifugal Separator  
**Model:**  
 STX-0250



**Specifications:**

Inlet: 3" MNPT  
 Outlet: 3" MNPT  
 Drain: 1 1/2" MNPT  
 Flowrate: 185-320 GPM

**Materials of Construction:**

Carbon Steel

**Voltage:** N/A

**Max. Temp.:** 200 °F

**Max. Press:** 150 PSI

**Weight:** 45 LBS

12	X	X
11	X	X
10	X	X
9	X	X
8	X	X
7	X	X
6	X	X
5	X	X
4	X	X
3	X	X
2	X	X
1	X	X

#	Part	Description
---	------	-------------



Phone: 714-257-9165  
 Fax: 714-257-9215  
[www.gtpcompany.com](http://www.gtpcompany.com)

**Drwn By:** JC  
**Date:** 12/1/10  
**Scale:** NTS  
**Rev:** A

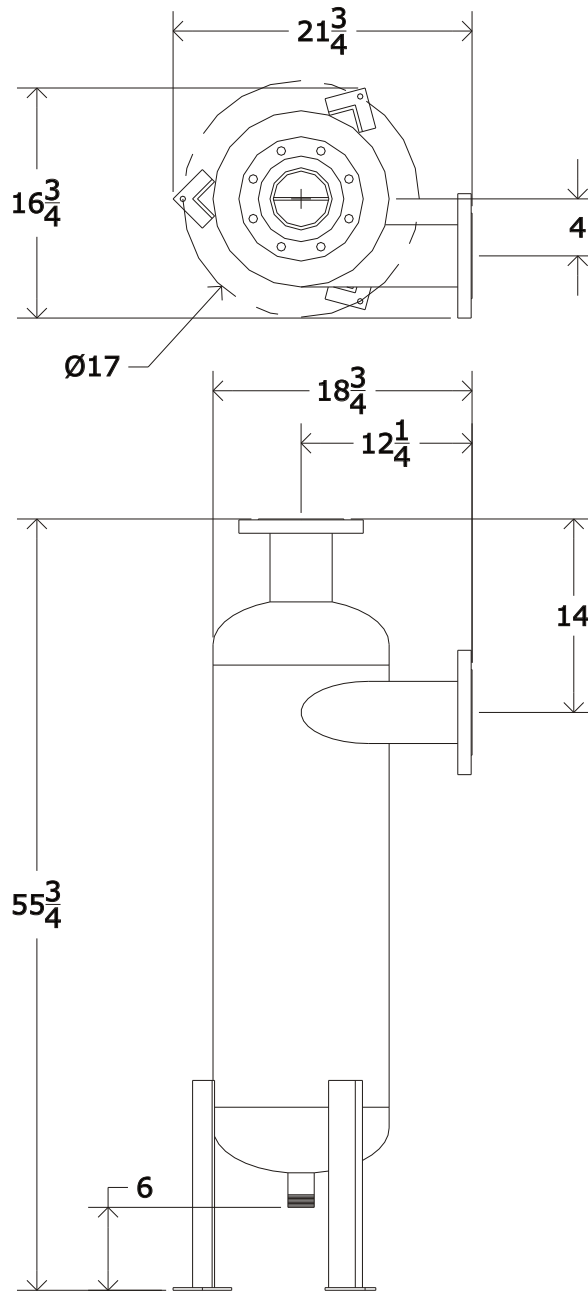
**Related Items:**  
 X

Rev.	Description	Date
D	X	X
C	X	X
B	X	X

**Notes:**  
 1)

**Notice**  
 This drawing and its content are for the specific use of GTP customers only. It is not to be duplicated or copied without expressed written content of General Treatment Products, Inc. We Reserve the right to modify this drawing with out notice.

**Description:**  
 3" Centrifugal Separator  
**Model:**  
 STX-0300



**Specifications:**  
 Inlet: 4" **Flange**  
 Outlet: 4" **Flange**  
 Drain: 1 1/2" **MNPT**  
 Flowrate: 350-610 **GPM**

**Materials of Construction:**  
 Carbon Steel

**Voltage:** N/A  
**Max. Temp.:** 200 °F  
**Max. Press:** 150 PSI  
**Weight:** 145 LBS

12	X	X
11	X	X
10	X	X
9	X	X
8	X	X
7	X	X
6	X	X
5	X	X
4	X	X
3	X	X
2	X	X
1	X	X

#	Part	Description
---	------	-------------



Phone: 714-257-9165  
 Fax: 714-257-9215  
[www.gtpcompany.com](http://www.gtpcompany.com)

**Drwn By:** JC  
**Date:** 12/1/10  
**Scale:** NTS  
**Rev:** A

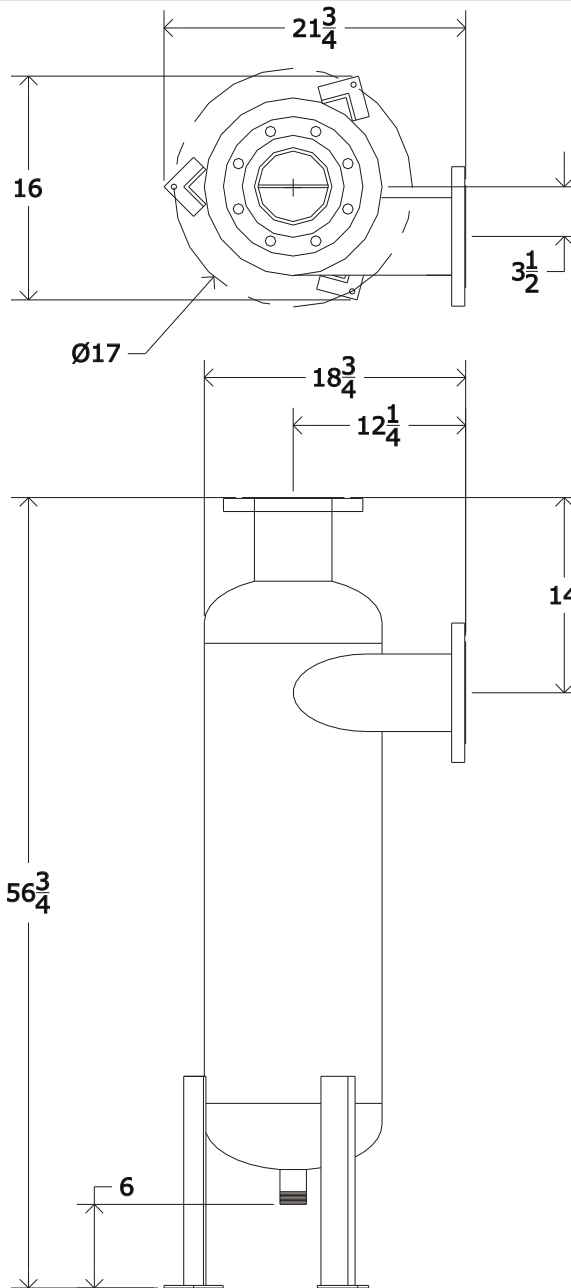
**Related Items:**  
 X

Rev.	Description	Date
D	X	X
C	X	X
B	X	X

**Notes:**  
 1)

**Notice**  
 This drawing and its content are for the specific use of GTP customers only. It is not to be duplicated or copied without expressed written content of General Treatment Products, Inc. We Reserve the right to modify this drawing with out notice.

**Description:**  
 4" Centrifugal Separator  
**Model:**  
 SFX-0400



**Specifications:**  
 Inlet: 5" **Flange**  
 Outlet: 5" **Flange**  
 Drain: 1 1/2" **MNPT**  
 Flowrate: 550-960 **GPM**

**Materials of Construction:**  
 Carbon Steel

**Voltage:** N/A  
**Max. Temp.:** 200 °F  
**Max. Press:** 150 PSI  
**Weight:** 165 LBS

12	X	X
11	X	X
10	X	X
9	X	X
8	X	X
7	X	X
6	X	X
5	X	X
4	X	X
3	X	X
2	X	X
1	X	X

#	Part	Description
---	------	-------------



Phone: 714-257-9165  
 Fax: 714-257-9215  
[www.gtpcompany.com](http://www.gtpcompany.com)

**Drwn By:** JC  
**Date:** 12/1/10  
**Scale:** NTS  
**Rev:** A

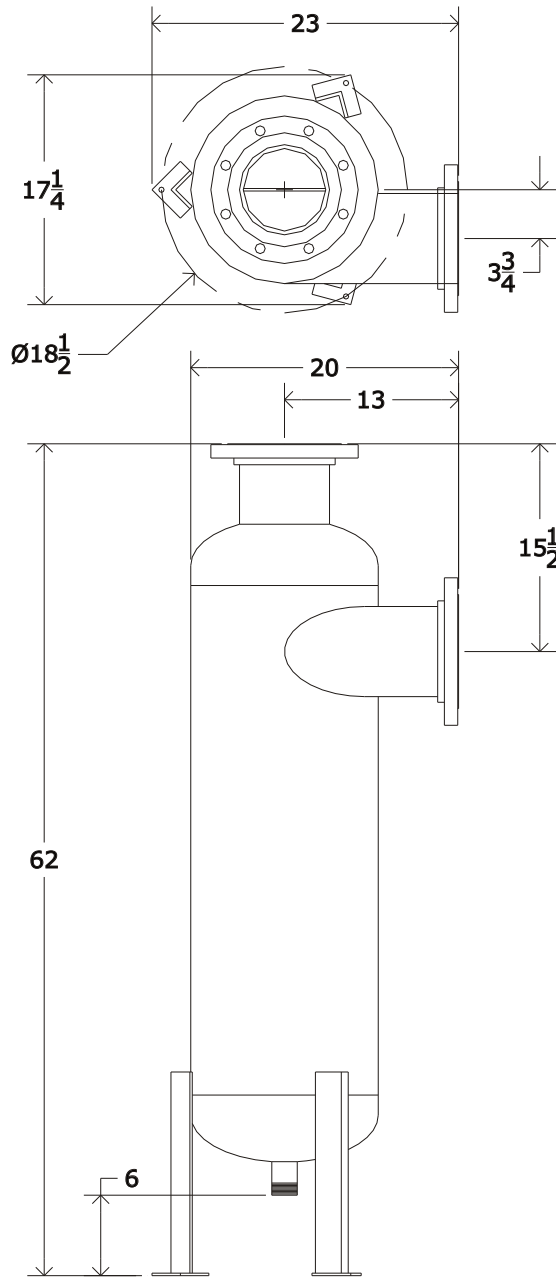
**Related Items:**  
 X

D	X	X
C	X	X
B	X	X
Rev.	Description	Date

**Notes:**  
 1)

**Notice**  
 This drawing and its content are for the specific use of GTP customers only. It is not to be duplicated or copied without expressed written content of General Treatment Products, Inc. We Reserve the right to modify this drawing with out notice.

**Description:**  
 5" Centrifugal Separator  
**Model:**  
 SFX-0500



**Specifications:**

Inlet: 6" Flange  
 Outlet: 6" Flange  
 Drain: 1 1/2" MNPT  
 Flowrate: 800-1390 GPM

**Materials of Construction:**

Carbon Steel

**Voltage:** N/A  
**Max. Temp.:** 200 °F  
**Max. Press:** 150 PSI  
**Weight:** 215 LBS

12	X	X
11	X	X
10	X	X
9	X	X
8	X	X
7	X	X
6	X	X
5	X	X
4	X	X
3	X	X
2	X	X
1	X	X

#	Part	Description
---	------	-------------



Phone: 714-257-9165  
 Fax: 714-257-9215  
[www.gtpcompany.com](http://www.gtpcompany.com)

**Drwn By:** JC  
**Date:** 12/1/10  
**Scale:** NTS  
**Rev:** A

**Related Items:**

X

D	X	X
C	X	X
B	X	X
Rev.	Description	Date

**Notes:**

1)

**Notice**

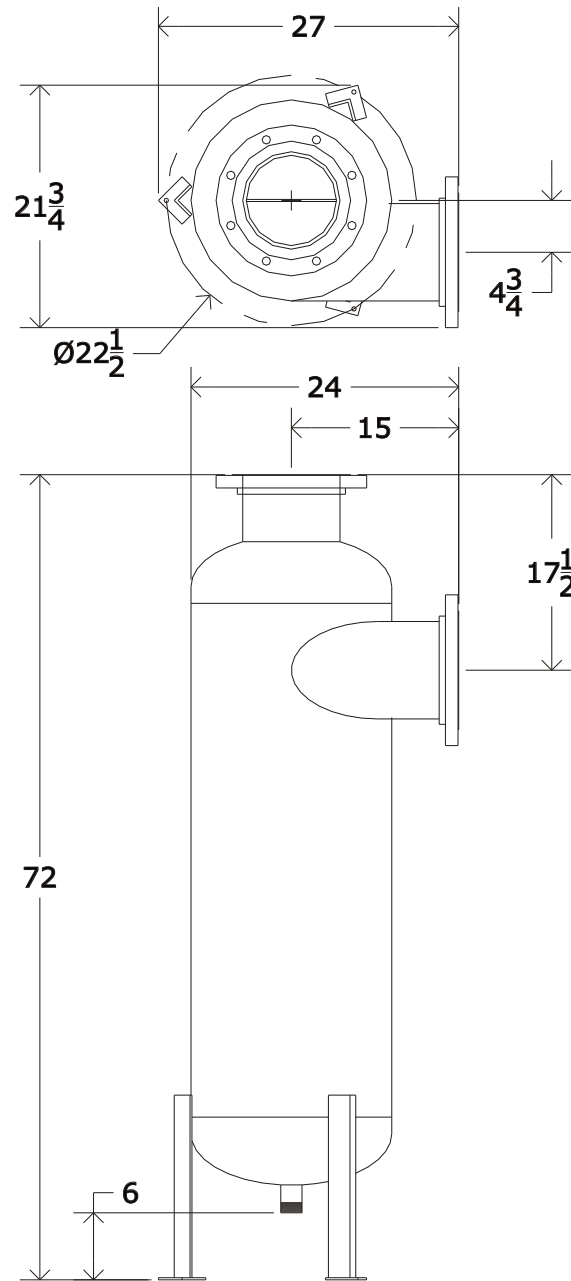
This drawing and its content are for the specific use of GTP customers only. It is not to be duplicated or copied without expressed written content of General Treatment Products, Inc. We Reserve the right to modify this drawing with out notice.

**Description:**

6" Centrifugal Separator

**Model:**

SFX-0600



**Specifications:**

Inlet: 8" **Flange**  
 Outlet: 8" **Flange**  
 Drain: 1 1/2" **MNPT**  
 Flowrate: 1380-2400 **GPM**

**Materials of Construction:**

Carbon Steel

**Voltage:** N/A  
**Max. Temp.:** 200 °F  
**Max. Press:** 150 PSI  
**Weight:** 335 LBS

12	X	X
11	X	X
10	X	X
9	X	X
8	X	X
7	X	X
6	X	X
5	X	X
4	X	X
3	X	X
2	X	X
1	X	X

#	Part	Description
---	------	-------------



Phone: 714-257-9165  
 Fax: 714-257-9215  
[www.gtpcompany.com](http://www.gtpcompany.com)

**Drwn By:** JC  
**Date:** 12/1/10  
**Scale:** NTS  
**Rev:** A

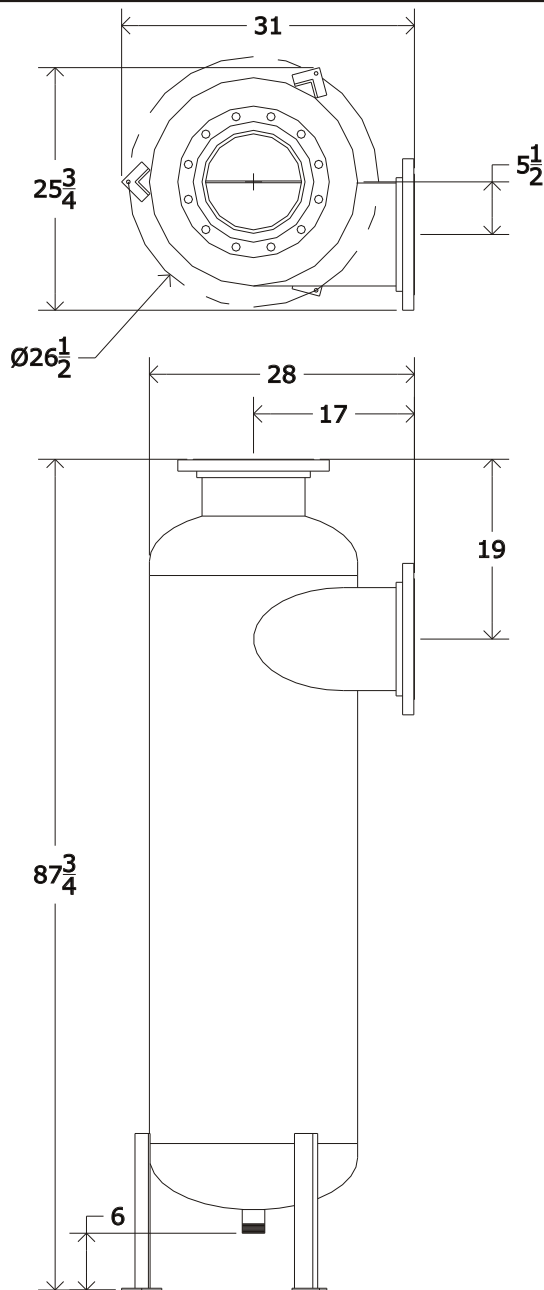
**Related Items:**  
 X

Rev.	Description	Date
D	X	X
C	X	X
B	X	X

**Notes:**  
 1)

**Notice**  
 This drawing and its content are for the specific use of GTP customers only. It is not to be duplicated or copied without expressed written content of General Treatment Products, Inc. We Reserve the right to modify this drawing with out notice.

**Description:**  
 8" Centrifugal Separator  
**Model:**  
 SFX-0800



**Specifications:**  
 Inlet: 10" **Flange**  
 Outlet: 10" **Flange**  
 Drain: 2" **MNPT**  
 Flowrate: 2175-3780 **GPM**

**Materials of Construction:**  
 Carbon Steel

**Voltage:** N/A  
**Max. Temp.:** 200 °F  
**Max. Press:** 150 PSI  
**Weight:** 545 LBS

12	X	X
11	X	X
10	X	X
9	X	X
8	X	X
7	X	X
6	X	X
5	X	X
4	X	X
3	X	X
2	X	X
1	X	X

#	Part	Description
---	------	-------------



Phone: 714-257-9165  
 Fax: 714-257-9215  
[www.gtpcompany.com](http://www.gtpcompany.com)

**Drwn By:** JC  
**Date:** 12/1/10  
**Scale:** NTS  
**Rev:** A

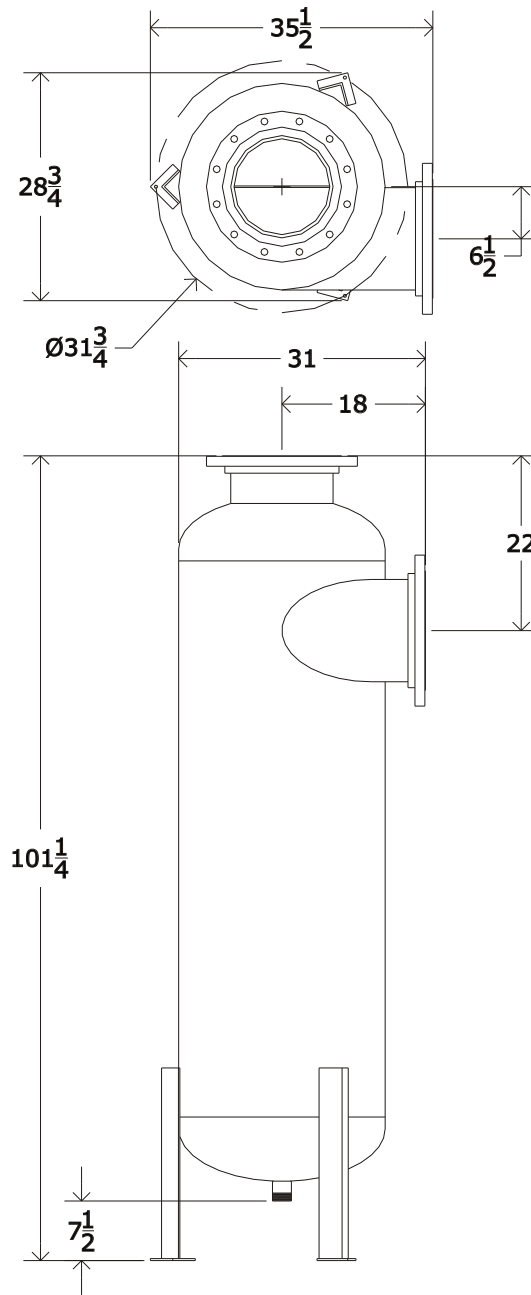
**Related Items:**  
 X

Rev.	Description	Date
D	X	X
C	X	X
B	X	X

**Notes:**  
 1)

**Notice**  
 This drawing and its content are for the specific use of GTP customers only. It is not to be duplicated or copied without expressed written content of General Treatment Products, Inc. We Reserve the right to modify this drawing with out notice.

**Description:**  
 10" Centrifugal Separator  
**Model:**  
 SFX-1000



**Specifications:**  
 Inlet: 12" **Flange**  
 Outlet: 12" **Flange**  
 Drain: 2" **MNPT**  
 Flowrate: 2910-5050 **GPM**

**Materials of Construction:**  
 Carbon Steel

**Voltage:** N/A  
**Max. Temp.:** 200 °F  
**Max. Press:** 150 PSI  
**Weight:** 815 LBS

12	X	X
11	X	X
10	X	X
9	X	X
8	X	X
7	X	X
6	X	X
5	X	X
4	X	X
3	X	X
2	X	X
1	X	X

#	Part	Description
---	------	-------------


**General Treatment Products, Inc.**  
 Phone: 714-257-9165  
 Fax: 714-257-9215  
[www.gtpcompany.com](http://www.gtpcompany.com)

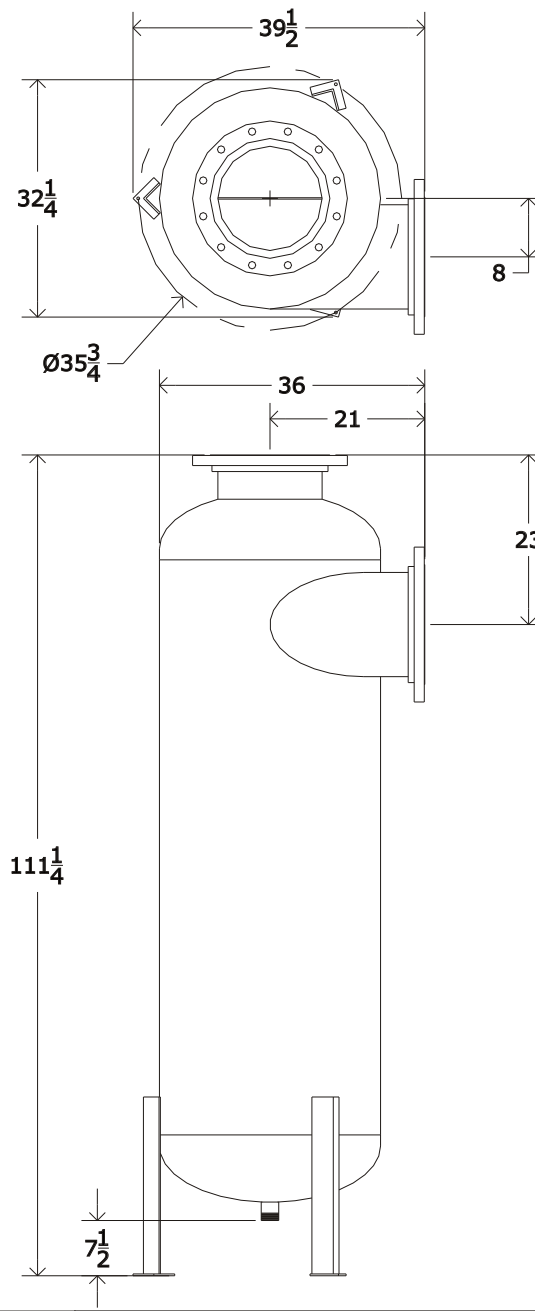
<b>Drwn By:</b> JC	<b>Related Items:</b> X
<b>Date:</b> 12/1/10	
<b>Scale:</b> NTS	
<b>Rev:</b> A	

<b>D</b>	X	X
<b>C</b>	X	X
<b>B</b>	X	X
<b>Rev.</b>	<b>Description</b>	<b>Date</b>

**Notes:**  
 1)

**Notice**  
 This drawing and its content are for the specific use of GTP customers only. It is not to be duplicated or copied without expressed written content of General Treatment Products, Inc. We Reserve the right to modify this drawing with out notice.

**Description:**  
 12" Centrifugal Separator  
**Model:**  
 SFX-1200



**Specifications:**  
 Inlet: 14" **Flange**  
 Outlet: 14" **Flange**  
 Drain: 2" **MNPT**  
 Flowrate: 3810-6600 **GPM**

**Materials of Construction:**  
 Carbon Steel

**Voltage:** N/A  
**Max. Temp.:** 200 °F  
**Max. Press:** 150 PSI  
**Weight:** 1350 LBS

12	X	X
11	X	X
10	X	X
9	X	X
8	X	X
7	X	X
6	X	X
5	X	X
4	X	X
3	X	X
2	X	X
1	X	X

#	Part	Description
---	------	-------------



Phone: 714-257-9165  
 Fax: 714-257-9215  
[www.gtpcompany.com](http://www.gtpcompany.com)

**Drwn By:** JC  
**Date:** 12/1/10  
**Scale:** NTS  
**Rev:** A

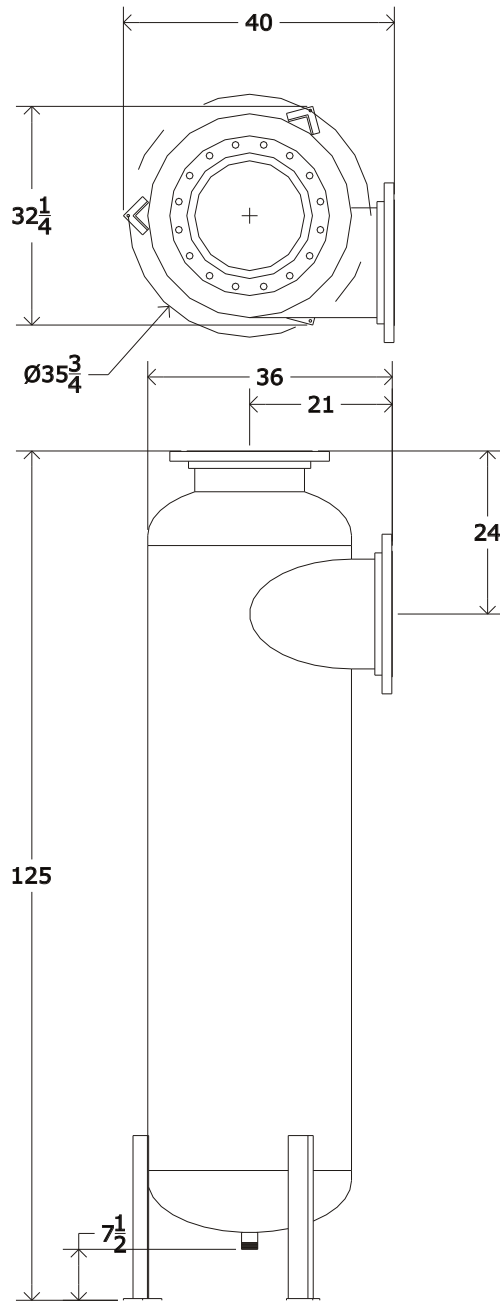
**Related Items:**  
 X

D	X	X
C	X	X
B	X	X
Rev.	Description	Date

**Notes:**  
 1)

**Notice**  
 This drawing and its content are for the specific use of GTP customers only. It is not to be duplicated or copied without expressed written content of General Treatment Products, Inc. We Reserve the right to modify this drawing with out notice.

**Description:**  
 14" Centrifugal Separator  
**Model:**  
 SFX-1400



**Specifications:**  
 Inlet: 16" **Flange**  
 Outlet: 16" **Flange**  
 Drain: 2" **MNPT**  
 Flowrate: 5050-8760 **GPM**

**Materials of Construction:**  
 Carbon Steel

**Voltage:** N/A  
**Max. Temp.:** 200 °F  
**Max. Press:** 150 PSI  
**Weight:** 1575 LBS

12	X	X
11	X	X
10	X	X
9	X	X
8	X	X
7	X	X
6	X	X
5	X	X
4	X	X
3	X	X
2	X	X
1	X	X

#	Part	Description
---	------	-------------



Phone: 714-257-9165  
 Fax: 714-257-9215  
[www.gtpcompany.com](http://www.gtpcompany.com)

**Drwn By:** JC  
**Date:** 12/1/10  
**Scale:** NTS  
**Rev:** A

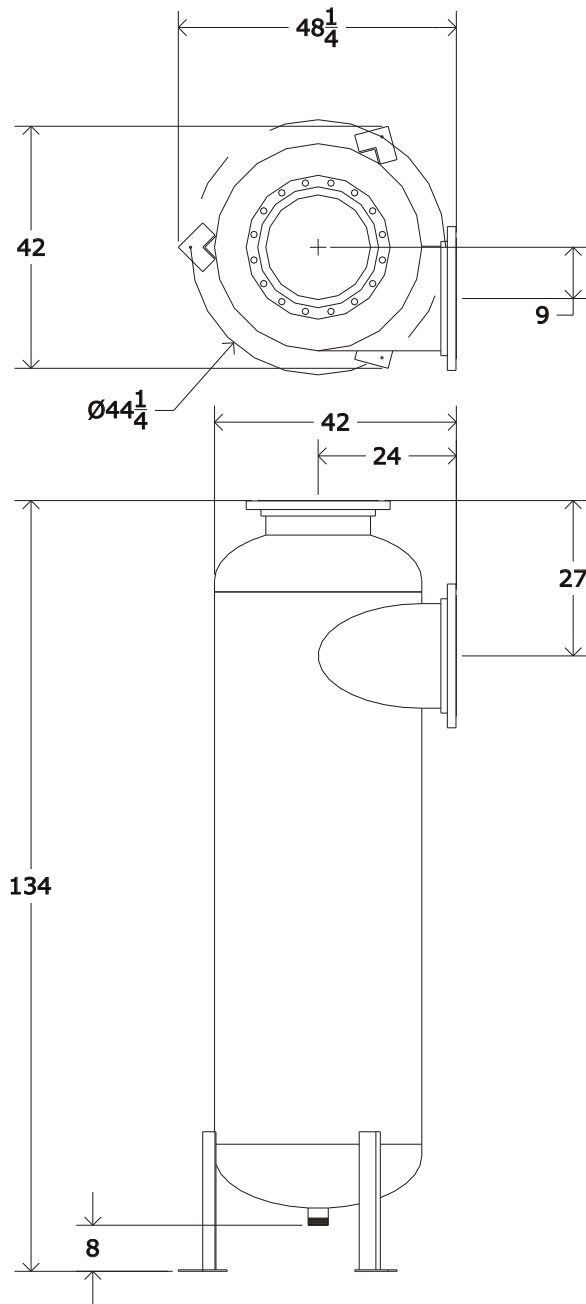
**Related Items:**  
 X

Rev.	Description	Date
D	X	X
C	X	X
B	X	X

**Notes:**  
 1)

**Notice**  
 This drawing and its content are for the specific use of GTP customers only. It is not to be duplicated or copied without expressed written content of General Treatment Products, Inc. We Reserve the right to modify this drawing with out notice.

**Description:**  
 16" Centrifugal Separator  
**Model:**  
 SFX-1600



**Specifications:**  
 Inlet: 18" **Flange**  
 Outlet: 18" **Flange**  
 Drain: 3" **MNPT**  
 Flowrate: 6500-11200 **GPM**

**Materials of Construction:**  
 Carbon Steel

**Voltage:** N/A  
**Max. Temp.:** 200 °F  
**Max. Press:** 150 PSI  
**Weight:** 2075 LBS

12	X	X
11	X	X
10	X	X
9	X	X
8	X	X
7	X	X
6	X	X
5	X	X
4	X	X
3	X	X
2	X	X
1	X	X

#	Part	Description
---	------	-------------

**GTP**  
 General Treatment Products, Inc.  
 Phone: 714-257-9165  
 Fax: 714-257-9215  
[www.gtpcompany.com](http://www.gtpcompany.com)

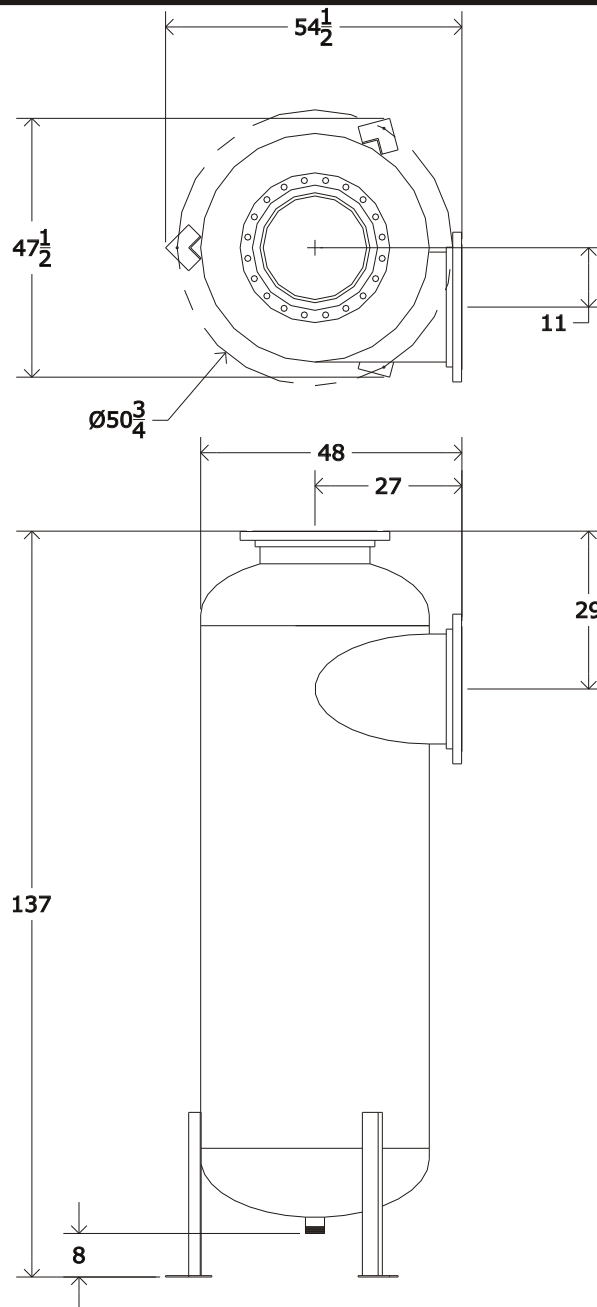
<b>Drwn By:</b> JC	<b>Related Items:</b> X
<b>Date:</b> 12/1/10	
<b>Scale:</b> NTS	
<b>Rev:</b> A	

D	X	X
C	X	X
B	X	X
Rev.	Description	Date

**Notes:**  
 1)

**Notice**  
 This drawing and its content are for the specific use of GTP customers only. It is not to be duplicated or copied without expressed written content of General Treatment Products, Inc. We Reserve the right to modify this drawing with out notice.

**Description:**  
 18" Centrifugal Separator  
**Model:**  
 SFX-1800



**Specifications:**  
 Inlet: 20" **Flange**  
 Outlet: 20" **Flange**  
 Drain: 3" **MNPT**  
 Flowrate: 8050-13950 **GPM**

**Materials of Construction:**  
 Carbon Steel

**Voltage:** N/A  
**Max. Temp.:** 200 °F  
**Max. Press:** 150 PSI  
**Weight:** 2500 LBS

12	X	X
11	X	X
10	X	X
9	X	X
8	X	X
7	X	X
6	X	X
5	X	X
4	X	X
3	X	X
2	X	X
1	X	X

#	Part	Description
---	------	-------------



Phone: 714-257-9165  
 Fax: 714-257-9215  
[www.gtpcompany.com](http://www.gtpcompany.com)

**Drwn By:** JC  
**Date:** 12/1/10  
**Scale:** NTS  
**Rev:** A

**Related Items:**  
 X

Rev.	Description	Date
D	X	X
C	X	X
B	X	X

**Notes:**  
 1)

**Notice**  
 This drawing and its content are for the specific use of GTP customers only. It is not to be duplicated or copied without expressed written content of General Treatment Products, Inc. We Reserve the right to modify this drawing with out notice.

**Description:**  
 20" Centrifugal Separator  
**Model:**  
 SFX-2000